

# PHILCO RADIO & TELEV. CORP.

## PACKARD-PHILCO MODEL P-1517 SINGLE UNIT RECEIVER

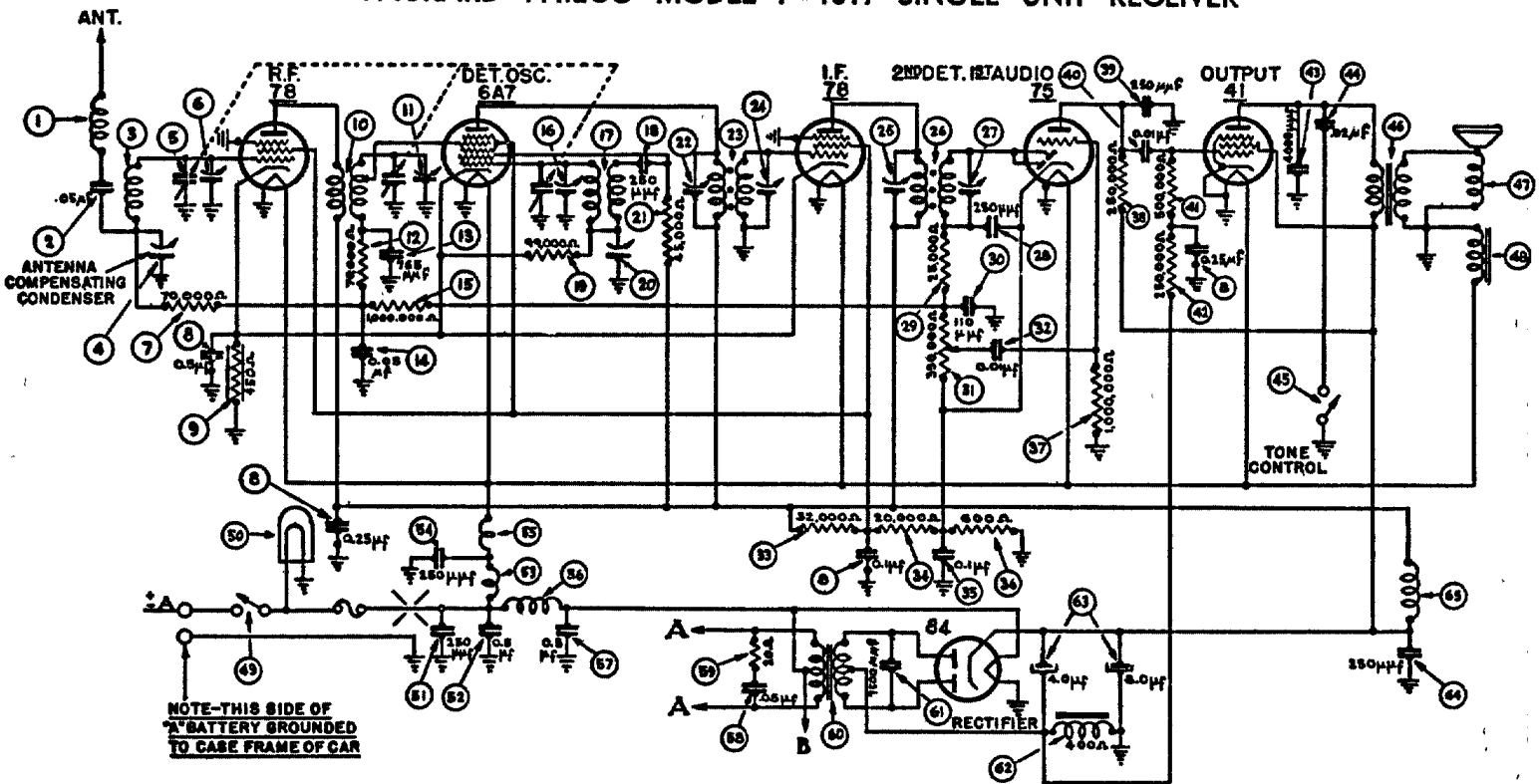
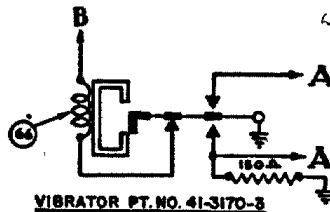
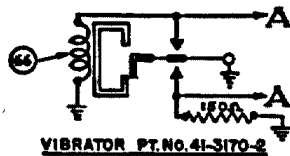


FIGURE 1



IF = 260 KC

OCTOBER 15, 1937

### PARTS LIST — MODEL P-1517

No.	Description	Part No.	Description	Part No.
1	Antenna Choke	32-2344	Condenser (4,000 mmfd.)	30-4185
2	Condenser (.05 mfd.)	30-4444	Condenser (.02 mfd.)	30-4419
3	Antenna Transformer	32-2516	Tone Control Switch	42-1383
4	Antenna Compensating		Output Transformer	32-7495
5	Condenser	31-6082	Cone & Voice Coil	36-3586
6	Tuning Condenser	31-1930	Field Coil Assembly	36-3597
7	First Padder (on Tun. Cond.)	32-2307	On & Off Switch	42-1368
8	Resistor (70,000 ohms)	33-370344	Pilot Lamp	34-2039
9	Condenser		Condenser (250 mmfd.)	30-1032
10	(.1-.25-.25-.5 mfd.)	30-4415	Condenser (.5 mfd.)	30-4015
11	Resistor (450 ohms)	33-1218	"A" Choke	32-2535
12	R. F. Transformer	32-2307	Condenser (250 mmfd.)	30-1032
13	Second Padder (on Tun. Cond.)		Filament Choke	32-1604
14	Resistor (70,000 ohms)	33-370344	Vibrator Choke	32-2039
15	Condenser (785 mmfd.)	30-1069	Condenser (.5 mfd.)	30-4015
16	Condenser (.05 mfd.)	3615-08G	Condenser (.05 mfd.)	30-4444
17	Resistor (1,000,000 ohms)	33-510344	Resistor (20 ohms)	33-020344
18	Third Padder (on Tun. Cond.)		Power Transformer	32-7550
19	Oscillator Transformer	32-2308	Condenser (7,500 mmfd.)	30-4420
20	Condenser (250 mmfd.)	30-1032	"B" Filter Choke	32-7545
21	Resistor (99,000 ohms)	33-399344	Filter Condenser (4-8 mfd.)	30-2150
22	Low Frequency Padder	31-6102	Condenser (250 mmfd.)	30-1032
23	Resistor (45,000 ohms)	33-345344	"B" Choke	32-1281
24	Padder (Pri. 1st. I. F. Trans.)		Vibrator (OPTIONAL)	41-3170-2
25	First I. F. Transformer	32-2026	Receiver Housing	38-9150
26	Padder (Sec. 1st. I. F. Trans.)		Pilot Lamp Assembly	38-8467
27	Padder (Pri. 2nd I. F. Trans.)		Tuning Shaft	28-8783
28	Second I. F. Transformer	32-2027	Volume Shaft	28-8784
29	Padder (Sec. 2nd I. F. Trans.)		Scale Assembly	42-5776
30	Condenser (250 mmfd.)	30-1032	Gland Nut	28-6773
31	Resistor (25,000 ohms)	33-325344	Four Prong Socket	27-6044
32	Condenser (110 mmfd.)	30-1031	Five Prong Socket	27-6035
33	Volume Control		Six Prong Socket	27-6036
34	(350,000 ohms)	33-5139	Seven Prong Socket	27-6037
35	Condenser (.01 mfd.)	3903-08U	Interference Condenser	
36	Resistor (82,000 ohms)	33-332434	(Dome Light)	30-4007
37	Resistor (20,000 ohms)	33-320344	Interference Condenser	
38	Condenser (.01 mfd.)	3903-08G	(Generator)	30-4475
39	Resistor (600 ohms)	33-1212	Distributor Resistor	4851
40	Resistor (1,000,000 ohms)	33-510344	Fuse	7227
41	Resistor (250,000 ohms)	33-424344	Fuse Insulator	27-7729
42	Condenser (250 mmfd.)	30-1032	Tee Bolt (Rec. Mtg.)	28-6288
43	Condenser (.01 mfd.)	3903-08U	Nut (Rec. Mtg.)	W-518A
44	Resistor (500,000 ohms)	33-449344		
45	Resistor (250,000 ohms)	33-424344		

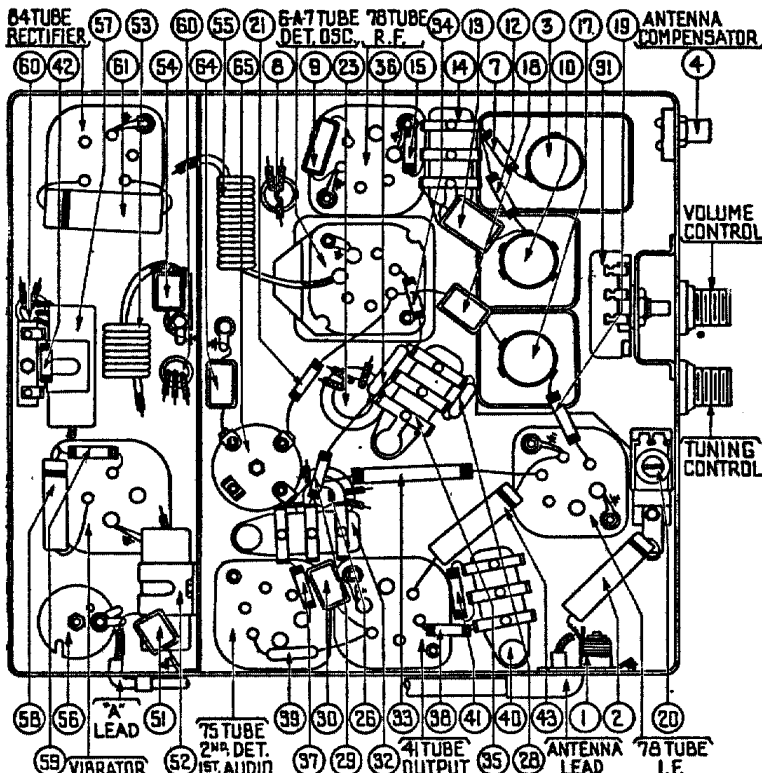


FIGURE 2