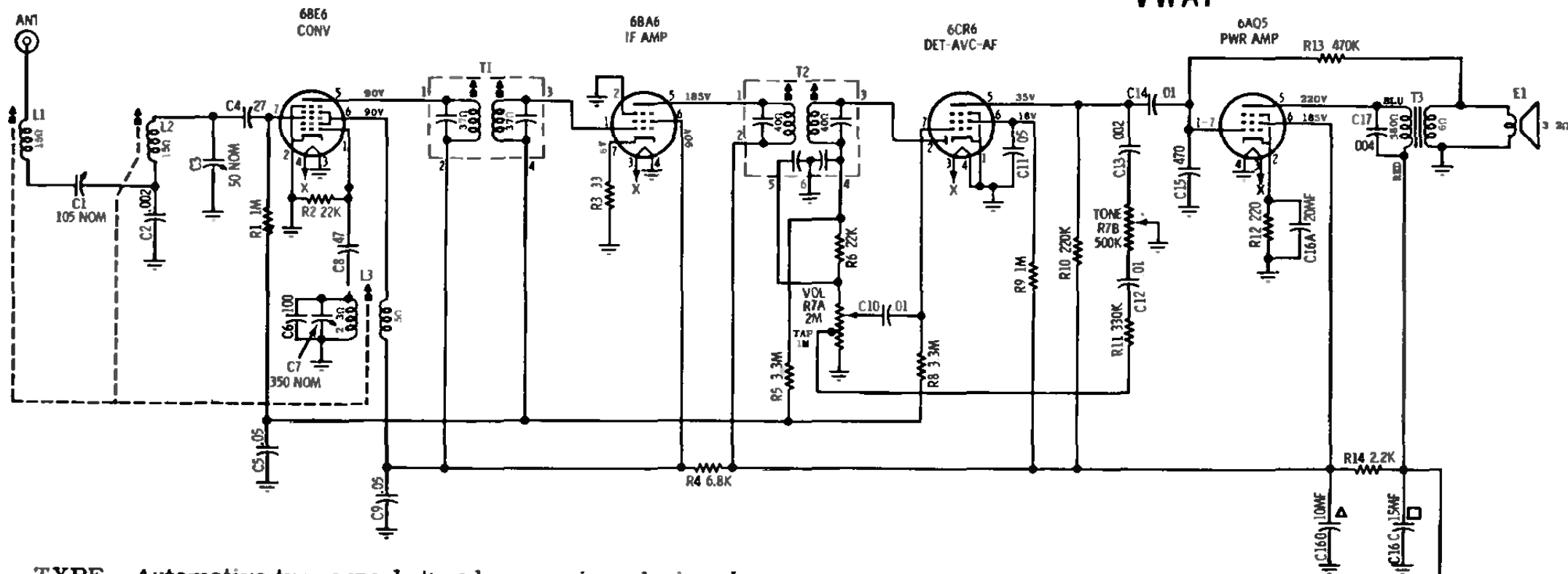


MOTOROLA

**AUTO RADIO
MODEL
VWA7**



TYPE - Automotive type superheterodyne receiver designed for custom installation in the 1957, 1956, 1955, 1954 & 1953 Volkswagen cars.

NOTES

CAPACITORS Decimal values in MF, all others in MMF unless otherwise specified.

VOLTAGES: Measured from point indicated to chassis with a VTVM. No signal input.

Tolerance $\pm 10\%$.

INPUT VOLTAGE: 7V

TUNING RANGE: 535 KC to 1605 KC.

IF: 262.5 KC.

