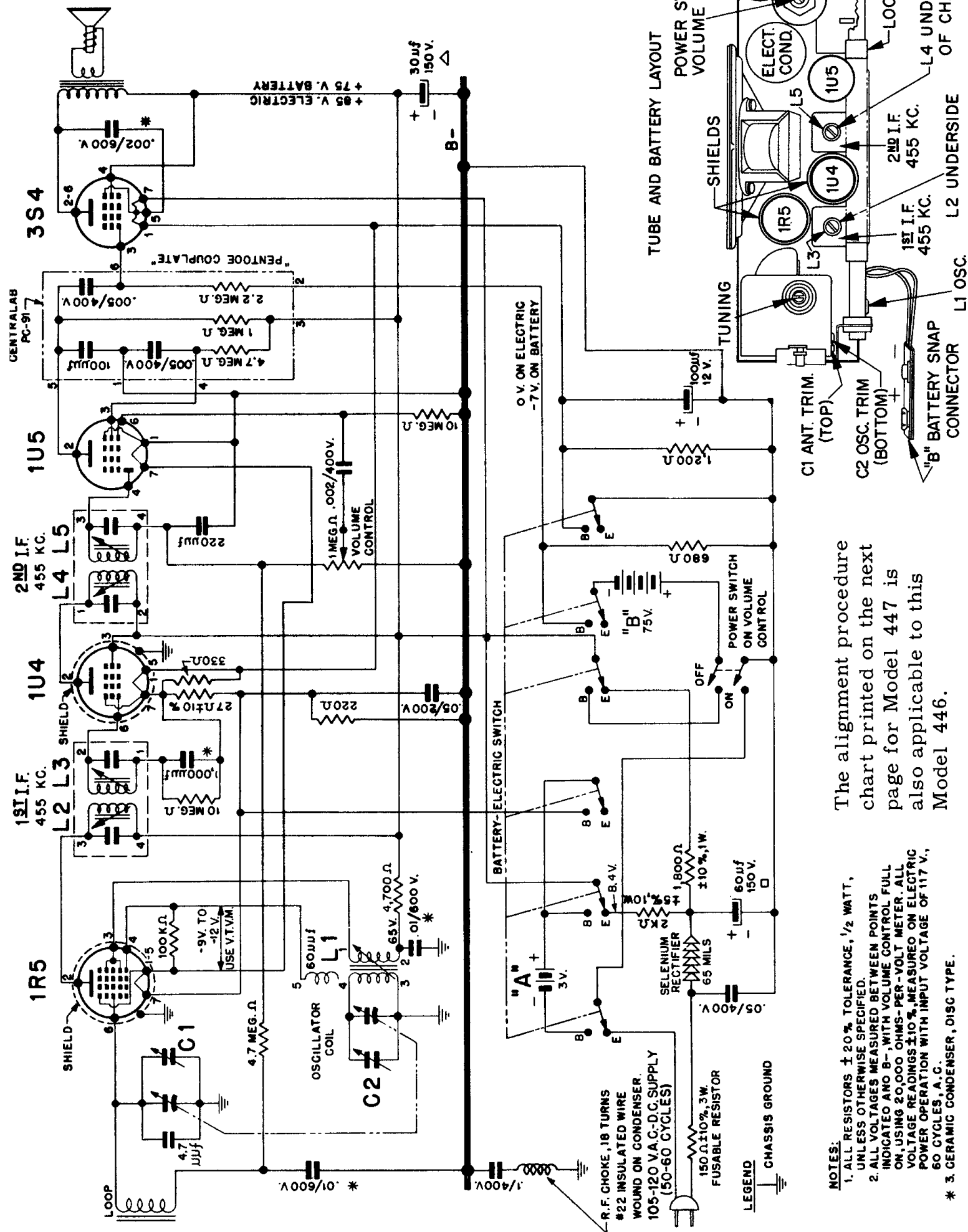


OLYMPIC RADIO MODEL NUMBER 446

GENERAL
PC-91



The alignment procedure chart printed on the next page for Model 447 is also applicable to this Model 446.

- NOTES:**
1. ALL RESISTORS ±20% TOLERANCE, 1/2 WATT, UNLESS OTHERWISE SPECIFIED.
 2. ALL VOLTAGES MEASURED BETWEEN POINTS INDICATED AND B-, WITH VOLUME CONTROL FULL ON, USING 20,000 OHMS-PER-VOLT METER. ALL VOLTAGE READINGS ±10%, MEASURED ON ELECTRIC POWER OPERATION WITH INPUT VOLTAGE OF 117 V., 60 CYCLES, A.C.
 3. CERAMIC CONDENSER, DISC TYPE.