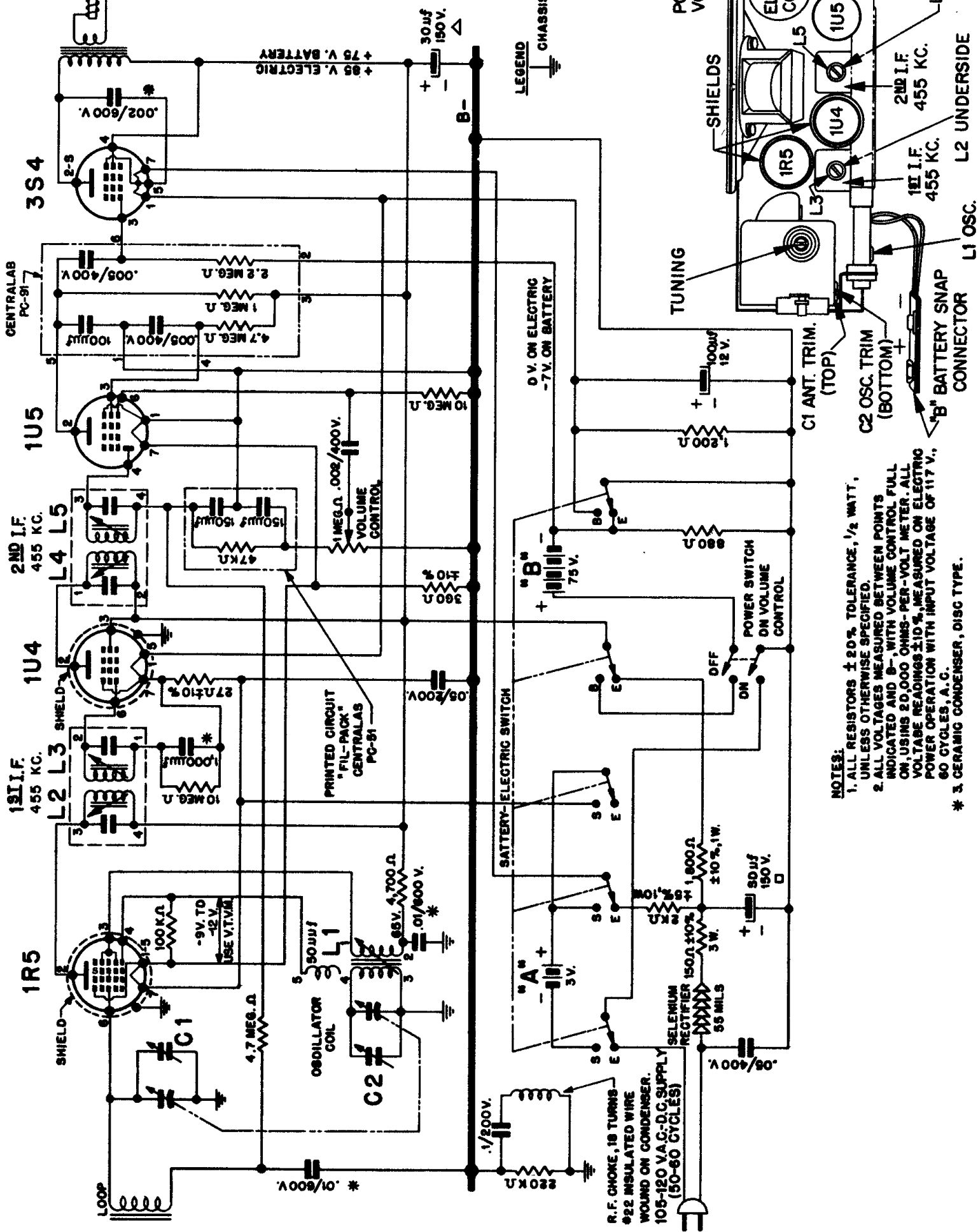


OLYMPIC RADIO MODEL NUMBER 445



NOTES:

1. ALL RESISTORS $\pm 20\%$ TOLERANCE, $\frac{1}{2}$ WATT.
2. ALL VOLTAGES MEASURED BETWEEN POINTS INDICATED AND 8- WITH VOLUME CONTROL FULL ON, USING 20,000 OHMS PER-VOLT METER. ALL VOLTAGE READINGS $\pm 10\%$, MEASURED ON ELECTRON POWER OPERATION WITH INPUT VOLTAGE OF 117 V., 60 CYCLES, A. C.

* 3. CERAMIC CONDENSER, DISC TYPE.

* 3 CERAMIC CONDENSER, DISC TYPE.