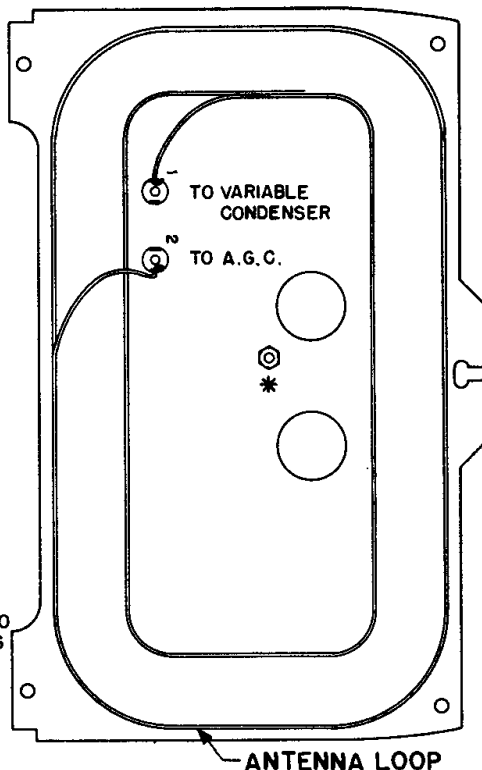
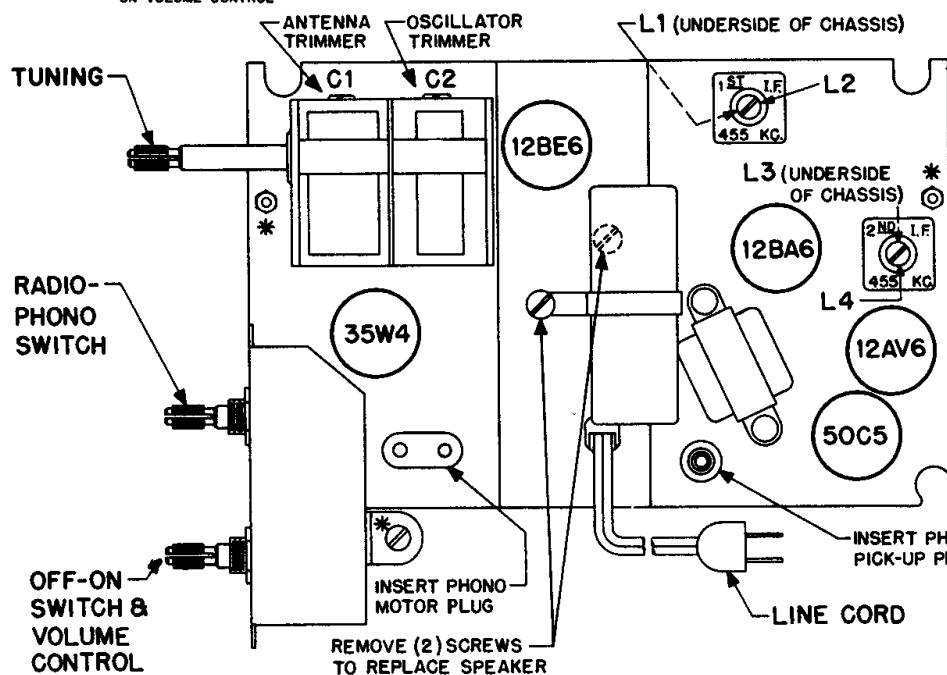
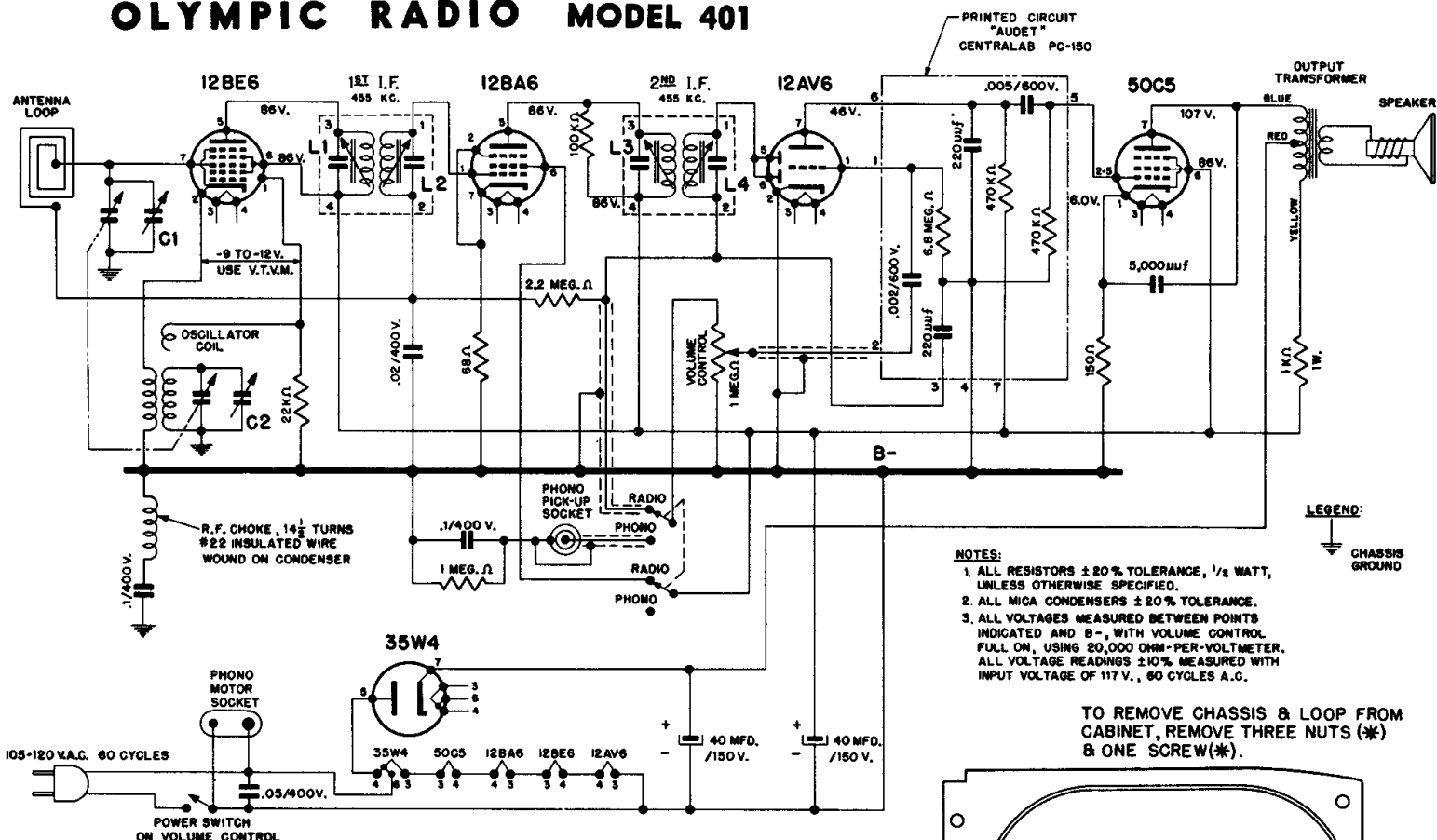


OLYMPIC RADIO MODEL 401



ALIGNMENT PROCEDURE CHART

STEP	CONNECT HIGH SIDE OF SIGNAL GENERATOR TO-	SET SIGNAL GENERATOR TO-	TURN RECEIVER DIAL TO -	ADJUST THE FOLLOWING FOR MAXIMUM OUTPUT (KEEP SIGNAL FROM SIGNAL GENERATOR AS LOW AS POSSIBLE.)
1	ANTENNA SECTION TUNING CONDENSER IN SERIES WITH .1MFD COND.	455 KC.	FULL COUNTER- CLOCKWISE POSITION. (CONDENSER PLATES FULLY OPEN)	L4, L3, L2, L1 AND REPEAT IN SAME ORDER (1ST. AND 2ND. I.F. TRANSFORMERS)
2	USE RADIATED SIGNAL	1620 KC.		C2 (OSCILLATOR TRIMMER)
3		1500 KC.		C1 (ANTENNA TRIMMER)
4		REPEAT STEPS 2 AND 3		