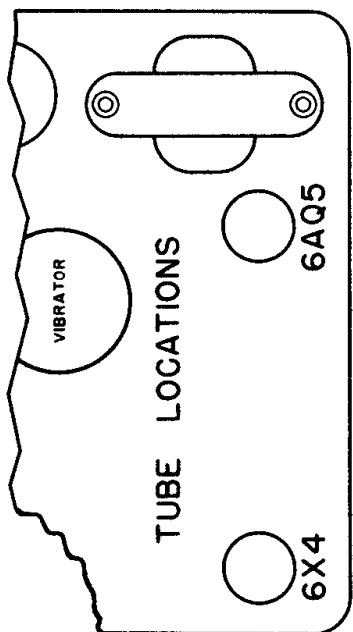
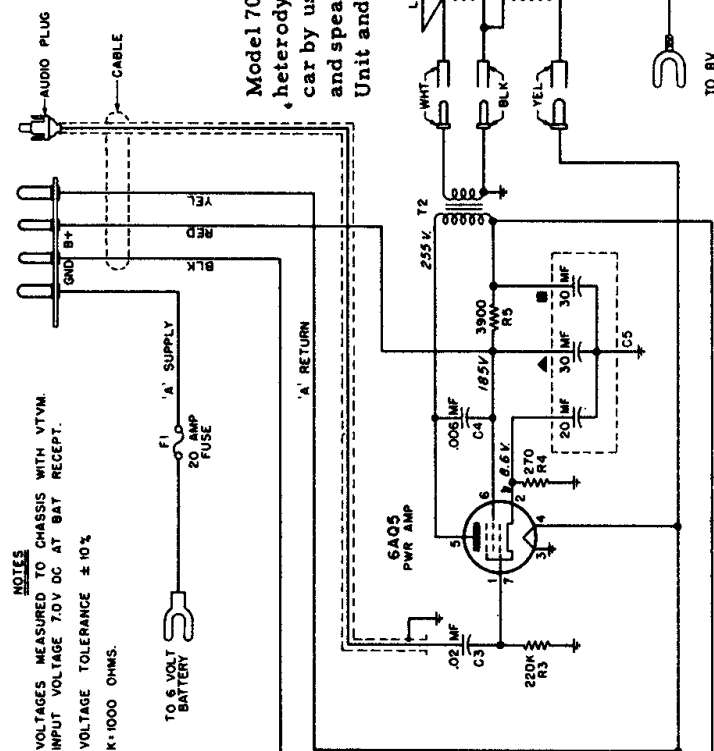


Model P6-2 is a two-tube Audio & Power Unit designed to be used with Tuner Units described in this manual.

MOTOROLA, INC.

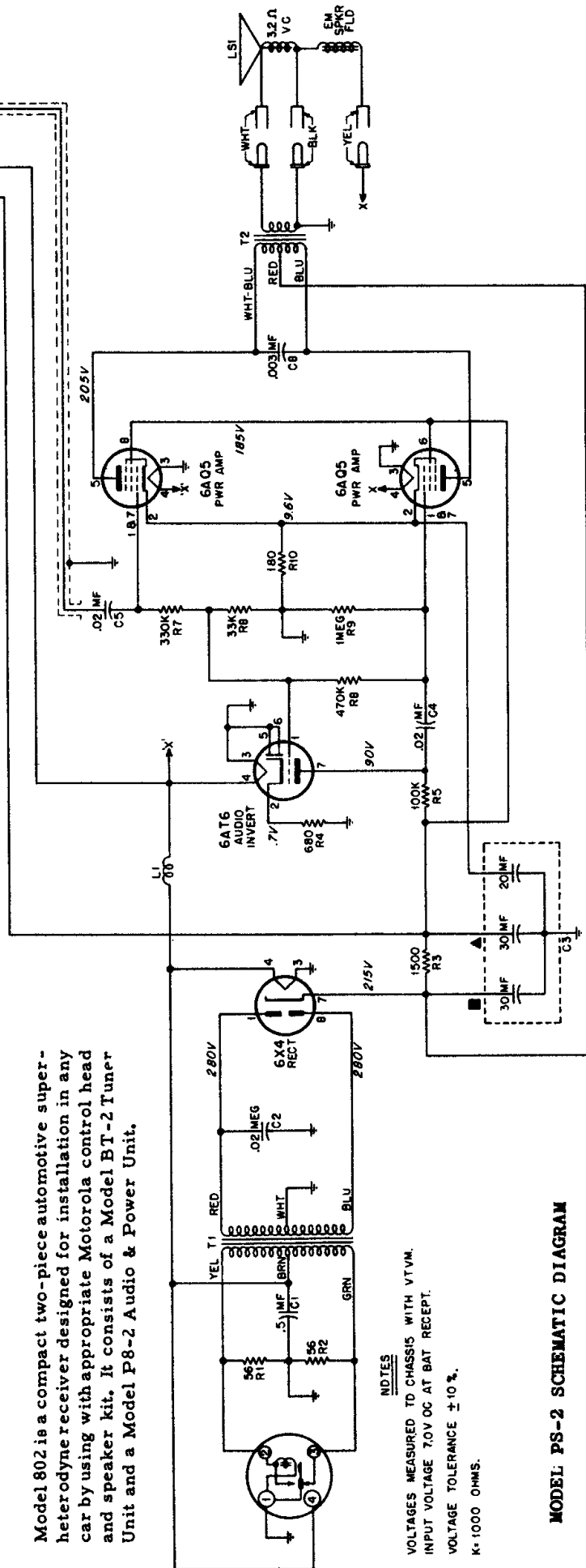
MODEL P6-2, P8-2, 702, & 802

Model 702 is a compact two-piece automotive super-heterodyne receiver designed for installation in any car by using with appropriate Motorola control head and speaker kit. It consists of a Model BT-2 Tuner Unit and a Model P6-2 Audio & Power Unit.



MODEL P6-2 SCHEMATIC DIAGRAM

Model 802 is a compact two-piece automotive super-heterodyne receiver designed for installation in any car by using with appropriate Motorola control head and speaker kit. It consists of a Model BT-2 Tuner Unit and a Model P8-2 Audio & Power Unit.



MODEL PS-2 SCHEMATIC DIAGRAM