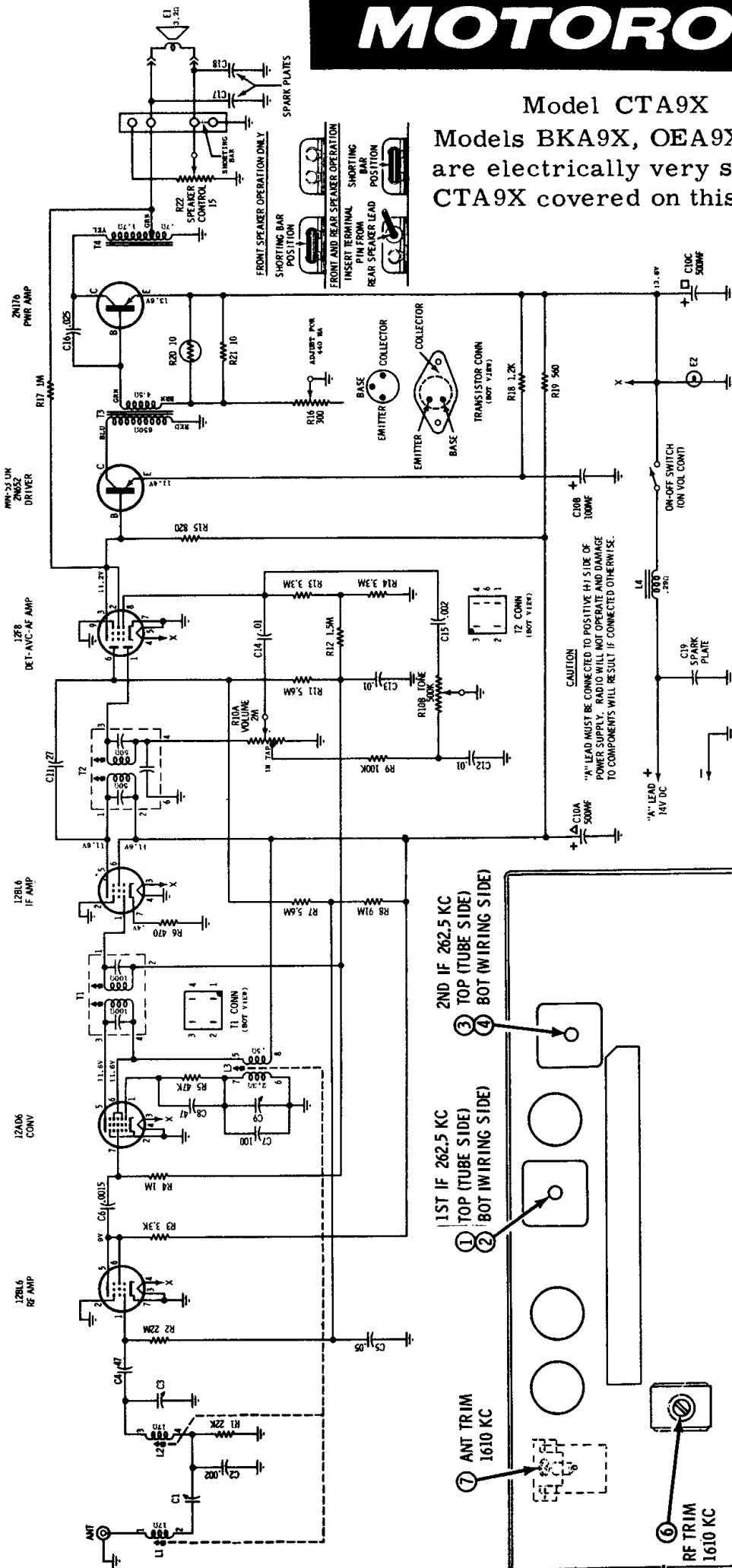


# MOTOROLA

## Model CTA9X

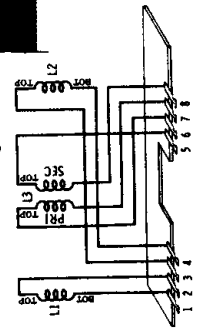
Models BKA9X, OEA9X, PCA9X, are electrically very similar to CTA9X covered on this page.



**POWER TRANSISTOR CURRENT ADJUSTMENT - After a power transistor has been replaced, the collector current should be checked and adjusted for proper operation.**

- Connect a 0-3 amp DC ammeter in series with the "A" lead.
- Remove output transistor from its socket.
- Turn radio on and read ammeter with 12.6 volts input to "A" lead (approximately 800 ma). NOTE READING.
- Turn radio off and replace transistor
- Turn radio on and adjust R-16 for a 360 ma increase over reading noted in step c with 12.6 volts input to "A" lead.

**NOTE: Two values of radio input voltage are given as a convenience to service personnel in order to accommodate different power sources. The current value of 440 ma stated on the schematic is for 14 volts DC input to receiver "A" lead.**



L1, L2 & L3 CONNECTION DETAIL

NOTES:

CAPACITORS - Decimal values in MF, all others in MMF unless otherwise specified.  
VOLTAGE - Measured from point indicated to chassis with a VTVM. No signal input. Tolerance  $\pm 10\%$ .  
INPUT VOLTAGE - 14V DC.  
TUNING RANGE - 540 KC to 1610 KC.  
IF FREQ. - 262.5 KC.

- 1ST IF 262.5 KC TOP (TUBE SIDE) BOT (WIRING SIDE)
- 2ND IF 262.5 KC TOP (TUBE SIDE) BOT (WIRING SIDE)

- ANT TRIM 1610 KC
- RF TRIM 1610 KC
- OSC TRIM 1610 KC
- ANT CORE 1200 KC
- OSC CORE 1200 KC
- RF CORE 1200 KC

ALIGNMENT LOCATION DETAIL

