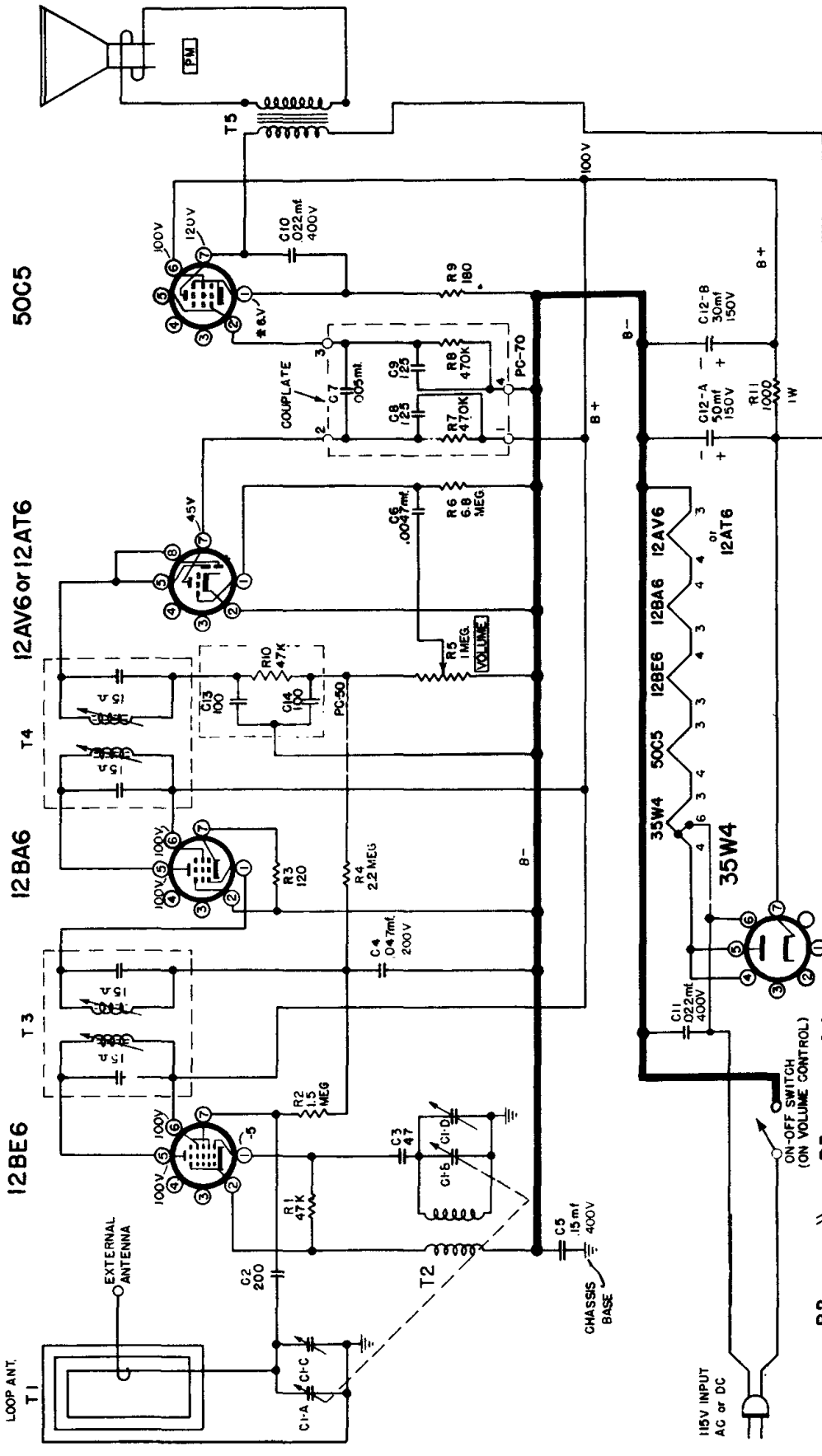


MONTGOMERY WARD

Models BR-1557B, BR-1558B



NOTES:
 VOLTAGE READINGS TAKEN WITH A 1000-OHM-PER-VOLT
 VOLT-METER ON THE 250 VOLT SCALE
 *RECAL ON THE 10 VOLT SCALE OF THE VOLT-METER
 LINE VOLTAGE 115V. A.C.
 UNLESS OTHERWISE SHOWN, RESISTOR VALUES ARE IN OHMS
 AND ARE 1/2 WATT
 CAPACITOR VALUES ARE IN MICRO-MICROFARADS

ALIGNMENT PROCEDURE

SIGNAL GENERATOR		TUNER SETTING		ADJUST FOR MAXIMUM OUTPUT	
FREQUENCY	COUPLING CAPACITY	CONNECTION TO RADIO	GROUND SIDE		
I.F.	.1 mfd.	GREEN LOOP LEAD	SHELL OF LYTIC	GANG OPEN (plates out of mesh)	Top and Bottom cores T4 and T3
Osc.	.1 mfd.	FRONT TRIMMER ON GANG	SHELL OF LYTIC	GANG OPEN (plates out of mesh)	C1F Osc. trimmer on gang
Ant.		Connect 3 turn loop generator place near loop on receiver		TUNE TO (1400 KC signal)	C1E Antenna trimmer on gang

CHECK FOR ALIGNMENT AND DIAL CALIBRATION AT 1000 AND 600 KC.

