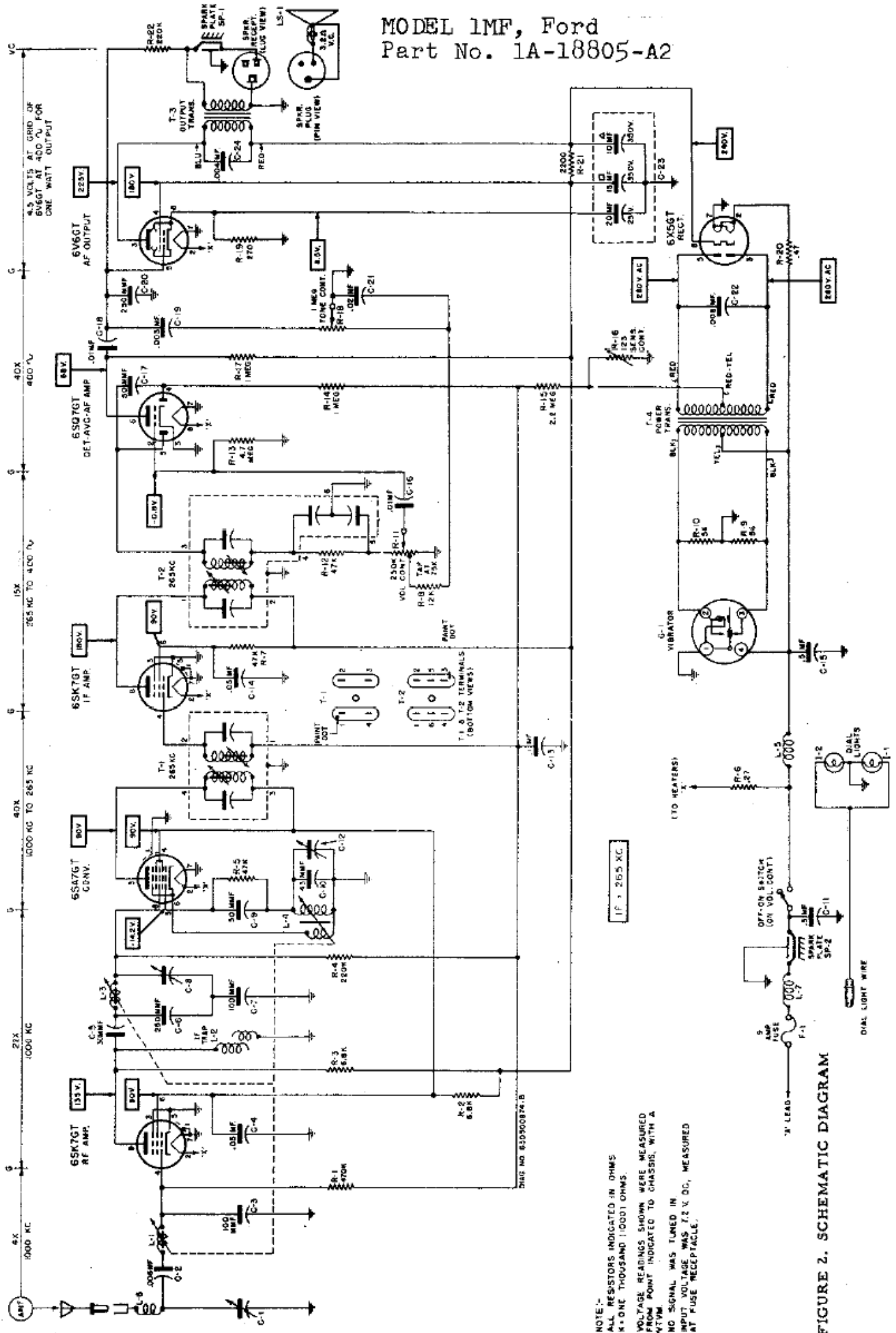


MODEL 1MF, Ford Part No. 1A-18805-A2



NOTE:
ALL RESISTORS INDICATED IN OHMS
X = ONE THOUSAND 1000 OHMS
VOLTAGE READINGS SHOWN WERE MEASURED
FROM POINT INDICATED TO CHASSIS, WITH A
411VM
NO SIGNAL WAS TUNED IN
INPUT VOLTAGE WAS 1.2 V DC, MEASURED
AT FUSE RECEPTACLE.

FIGURE 2. SCHEMATIC DIAGRAM

ALIGNMENT

MODEL 1MF, Ford
Part No. 1A-18805-A2

Connect the receiver "A" lead and receiver chassis to a 6 volt storage battery. Rotate volume and tone controls to maximum clockwise position. Connect an output meter across the speaker voice coil. Use an insulated screwdriver for making all adjustments. For greatest accuracy, keep output of receiver at approximately 1 watt (1 watt = 1.79 volts on output meter) throughout alignment by reducing generator output (not receiver volume control) as stages are brought into alignment. Remove receiver es-

cutcheon, dial scale, and top & bottom covers to expose all alignment adjustments. See Figure 1.

To adjust the pointer, tune the receiver to a 1300 Kc signal, and rotate the adjusting cam (see Figure 1) until the pointer coincides with the 1300 Kc marker on the dial scale. This cam may be adjusted thru a hole provided in the top cover.

ALIGNMENT CHART

STEP	DUMMY ANTENNA	GENERATOR CONNECTION	GENERATOR FREQUENCY	TUNER SET TO	ADJUST	REMARKS
IF ALIGNMENT						
1.	.1 mf	Converter grid (6SA7GT pin 8)	265 Kc	HF end stop	1, 2, 3 & 4	Adjust for maximum. Repeat for greater accuracy.
RF ALIGNMENT						
2.	See Fig. 1	Ant. receptacle	1608 Kc	HF end stop*	C-12, C-8 C-1	Adjust for maximum.
3.	See Fig. 1	Ant. receptacle	1300 Kc	Move carriage "in" 21/64" from HF end stop position. See Fig. 1.	L-4, L-3 L-1	Adjust for maximum.
4.	See Fig. 1	Ant. receptacle	1608 Kc	HF end stop	C-12, C-8 C-1	Adjust for maximum.
5. Repeat steps 3 & 4 until no further increase is obtainable. After final adjustment is made, cement core adjustments in place with speaker cement.						
SENSITIVITY CONTROL						
6.	See Fig. 1	Ant. receptacle	Set to 600 kc & 4 microvolts output	Tune for max	Sensitivity control	Set sensitivity control for 1 watt output (1.79 volts on output meter).
ANTENNA TRIMMER ADJUSTMENT						
7.	-	-	-	Weak station at approx. 1400 Kc	C-1	With receiver installed in car, peak antenna trimmer for maximum volume. Ant. should be fully extended.

*Tuner cores should be backed out to project 1-3/8" from end of coil forms so they will have no effect on trimmer adj.

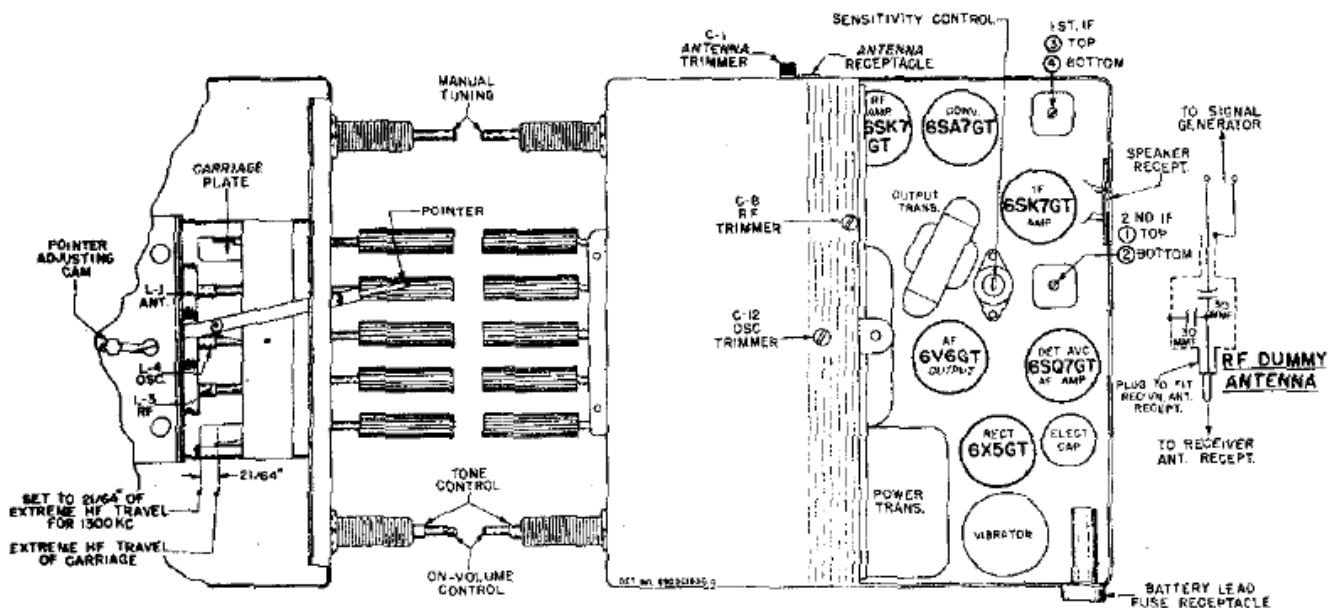


FIGURE 1. TUBE AND TRIMMER LOCATIONS