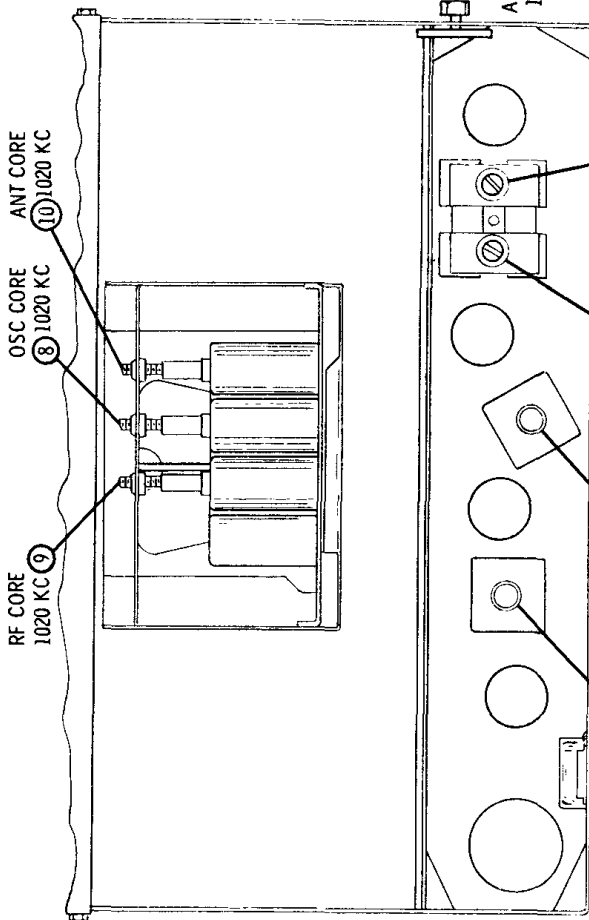


MOTOROLA

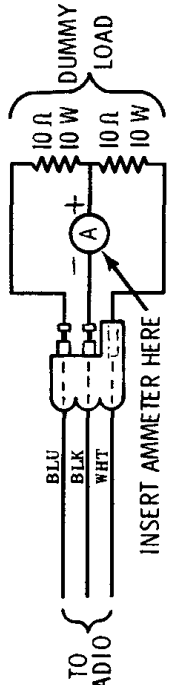
MODEL
MOTOROLA 04MA

AMERICAN MOTORS 8990706

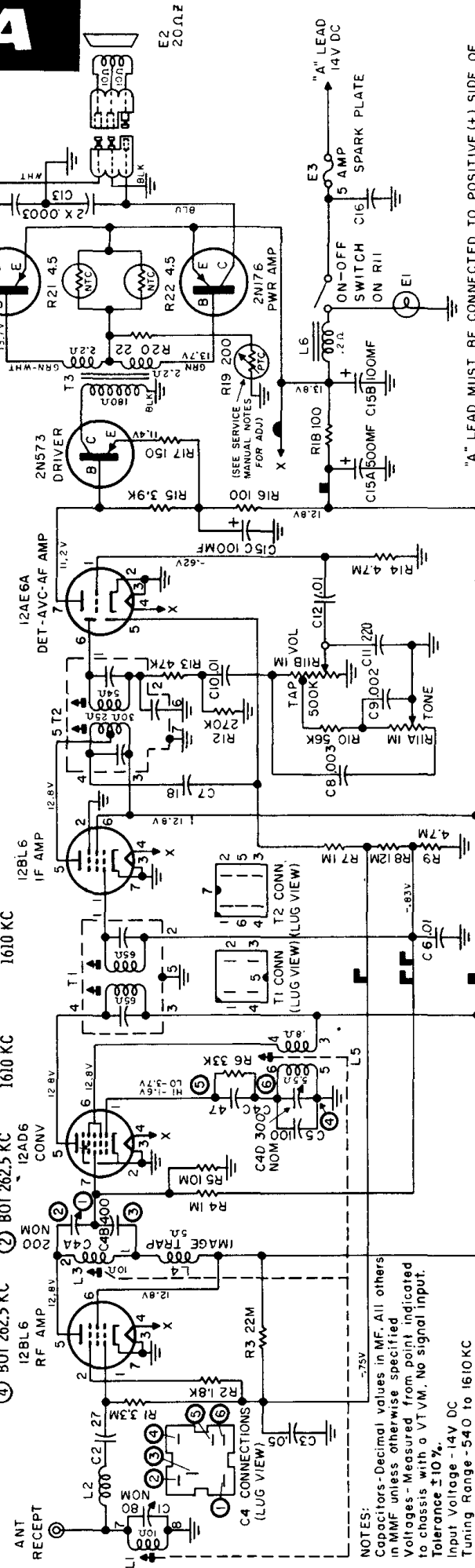
ALIGNMENT POINTS LOCATION DETAIL



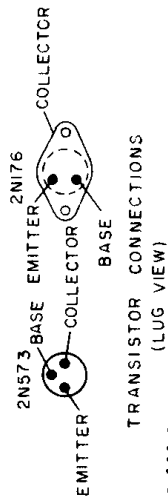
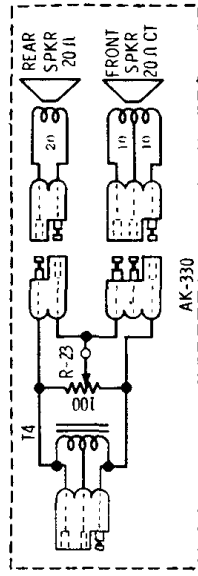
- POWER TRANSISTOR CURRENT ADJUSTMENT** - After replacing a power transistor, measure the collector current of BOTH power transistors and adjust for proper operation.
- Allow radio to warm up for 15 minutes.
 - Connect a 0-1 amp DC AMMETER, whose internal resistance is .05 ohms or less in series with the center tap of a dummy load (see illustration). Connect positive side of meter to dummy load center tap; connect negative side of meter to radio chassis (ground).
 - Adjust R-19 for a reading of 140 ma with 12.6 volts input to radio "A" lead.



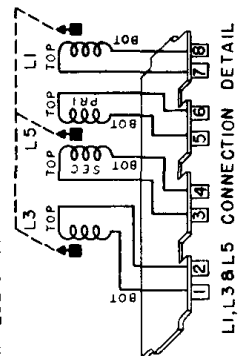
ADJUSTING TRANSISTOR CURRENT OR OPERATING SET WITHOUT SPEAKER



"A" LEAD MUST BE CONNECTED TO POSITIVE (+) SIDE OF POWER SUPPLY. RADIO WILL NOT OPERATE AND DAMAGE TO COMPONENTS WILL RESULT IF CONNECTED OTHERWISE



PLATED PANEL WIRING LEGEND
■ = B+
■ = FILAMENT
■ = RF, AVC
■ = IF CONV AVC



MOTOROLA 04MA

AMERICAN MOTORS 8990706

L1, L3 & L5 CONNECTION DETAIL

NOTES:
Capacitors - Decimal values in MF. All others in MMF unless otherwise specified.
Voltages - Measured from point indicated to chassis with a VTVM. No signal input.
Tolerance $\pm 10\%$.
Input Voltage - 14V DC
Tuning Range - 540 to 1610 KC.
IF - 262.5 KC.