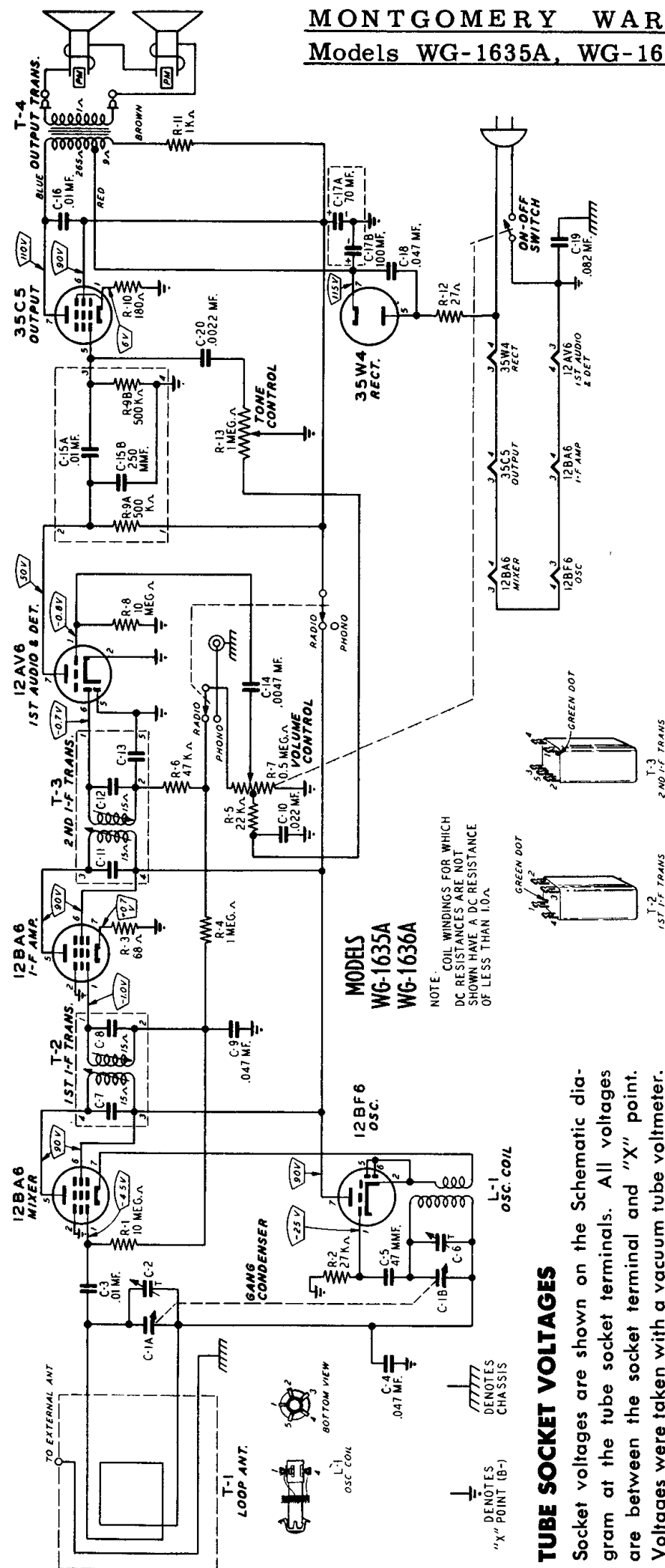


MONTGOMERY WARD

Models WG-1635A, WG-1636A



ALIGNMENT PROCEDURE

Dummy Antennas—.1 mf., 50 mmf.
Volume Control—Maximum All Adjustments.
Allow Chassis and Signal Generator to "Heat Up" for several Minutes.

FREQUENCY SETTING	SIGNAL GENERATOR		DUMMY ANTENNA	GANG CONDENSER SETTING	ADJUST TUNING SLUGS (I.F.) AND TRIMMERS TO MAXIMUM
	ANTENNA CONNECTION	GROUND CONNECTION			
455 KC	Control Grid 12BA6—I.F. Prong No. 1	"X" Point	.1 mf.	Turn Rotor to full open	2nd I.F. Pri. (1) & Sec. (2)
455 KC	Control Grid 12BA6 Mixer Prong No. 1	"X" Point	.1 mf.	Turn Rotor to full open	1st I.F. Pri. (3) & Sec. (4)
1620 KC	Control Grid 12BA6 Mixer Prong No. 1	"X" Point	.1 mf.	Turn Rotor to full open	2nd I.F. Pri. (1) & Sec. (2)
1400 KC	External Antenna Clip On Loop	Chassis	50 mmf.	Tune Receiver to 1400 KC.	Oscillator (C-6) Antenna (C-2) Trimmer

