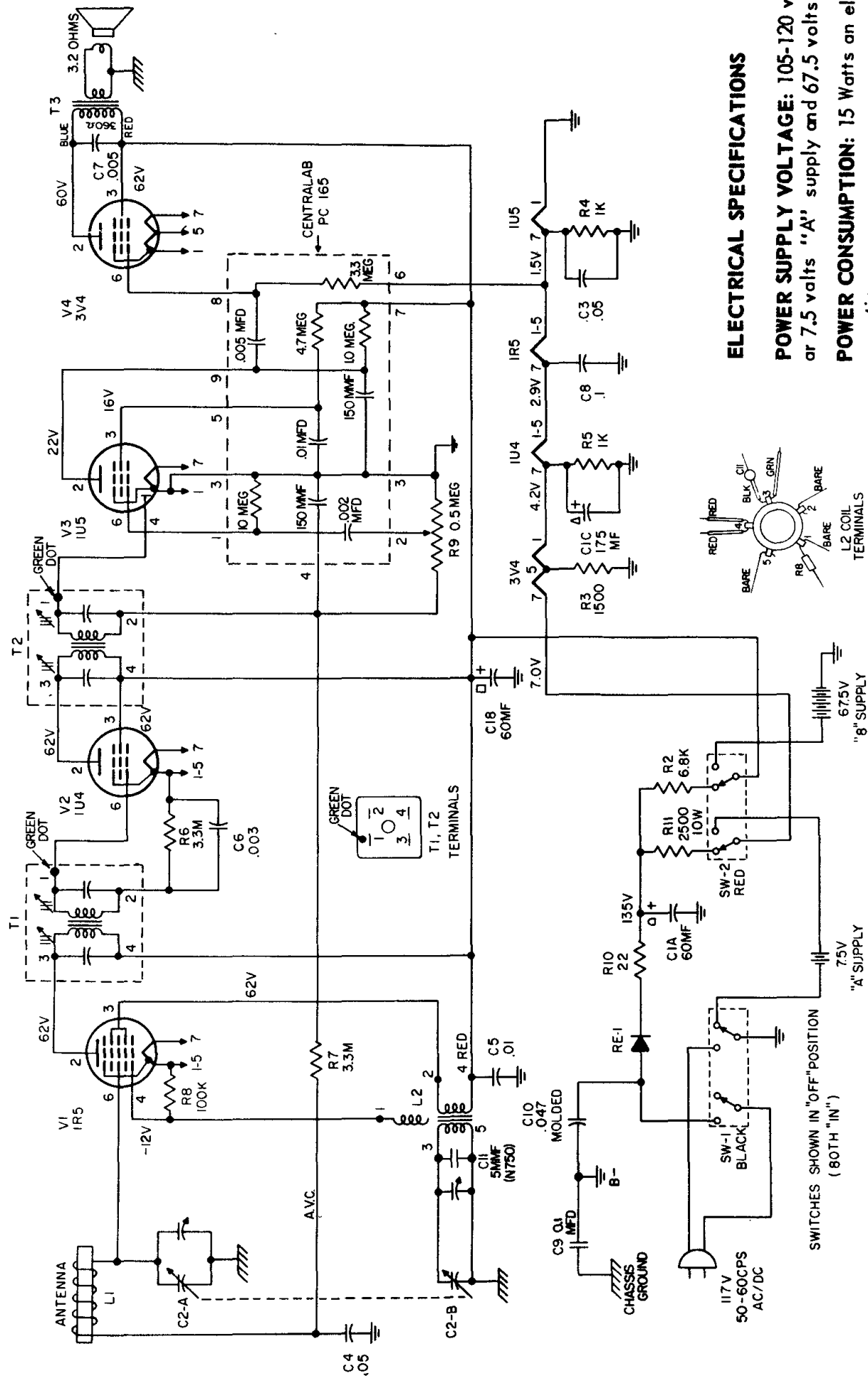


MONTGOMERY WARD & CO.
MODELS GEN-1115A, GEN-1116A



ELECTRICAL SPECIFICATIONS

POWER SUPPLY VOLTAGE: 105-120 volts AC/DC
or 7.5 volts "A" supply and 67.5 volts "B" supply

POWER CONSUMPTION: 15 Watts an electrical operation.

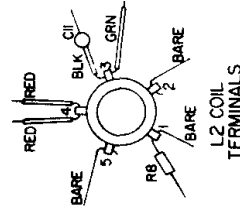
BATTERY DRAIN: 50 MA at 7.5 V and 12 MA at 67.5 V.

TUNING RANGE: 540 KC-1620 KC

I.F. STAGE: 455 KC

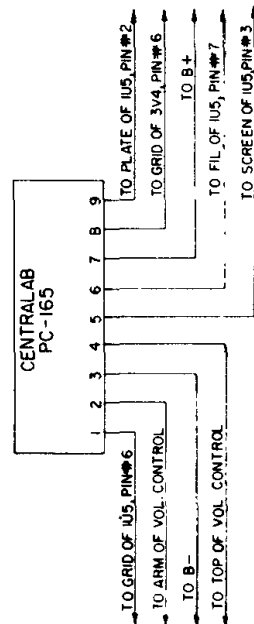
LOUDSPEAKER: 4" PM

VOICE COIL IMPEDANCE: 3.2 ohms at 400 CPS



	BLACK	RED
SW-1	IN	SW-2
OFF	IN	IN
BATTERY	IN	OUT
AC/DC	OUT	IN

NOTE:
ALL VOLTAGE READINGS MADE WITH VTVM.
GROUND OF VTVM AT B- LINE VOLTAGE
117 VOLTS 60 CYCLES. VOLUME CONTROL
AT MAXIMUM CLOCKWISE POSITION WITH
NO SIGNAL. ALL RESISTANCE READINGS
MADE WITH RESPECT TO B-.



SWITCHES SHOWN IN "OFF" POSITION
(BOTH "IN")

"A" SUPPLY

"B" SUPPLY