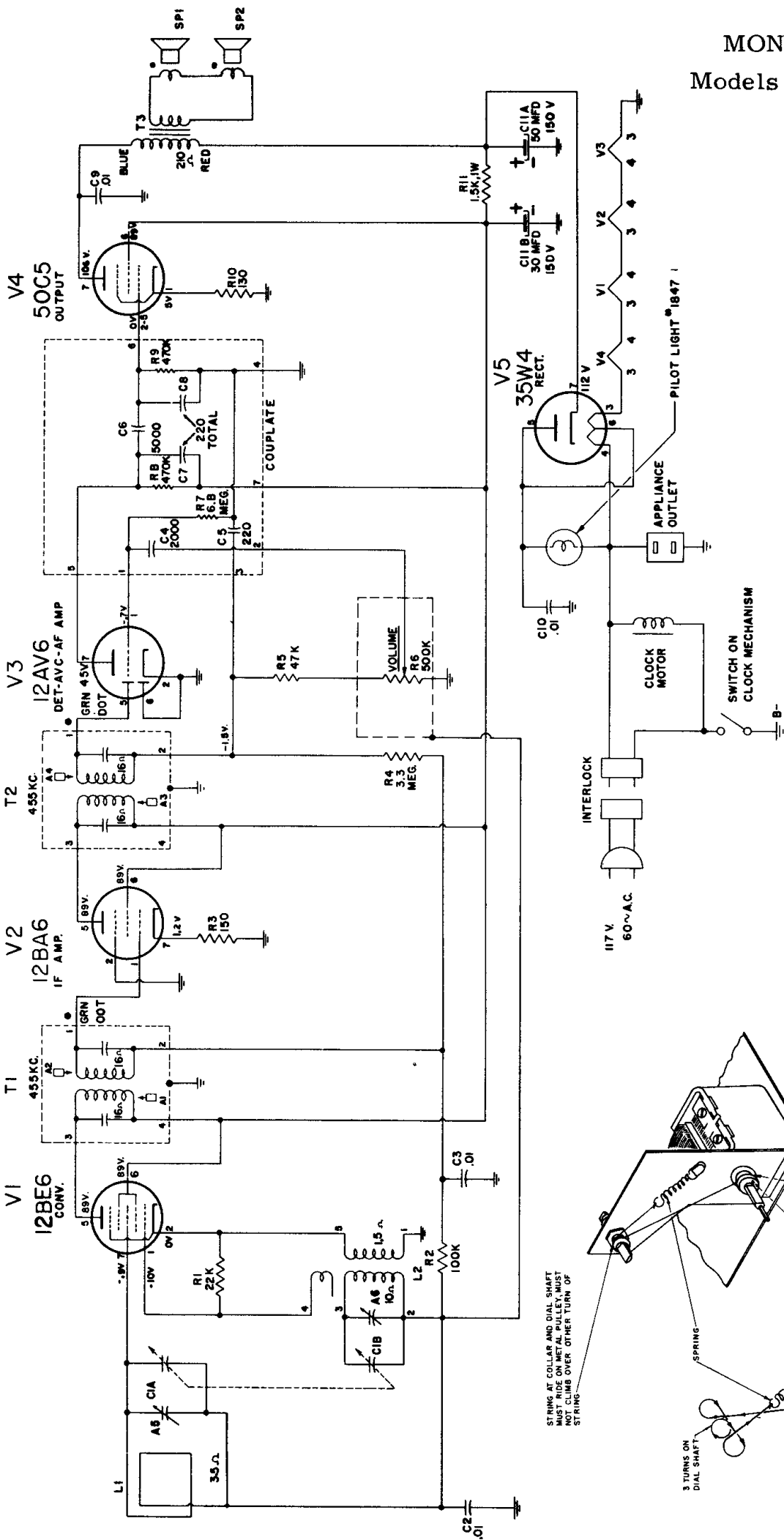
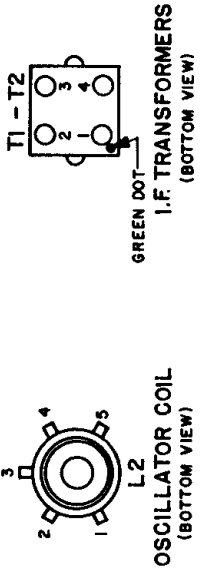


MONTGOMERY WARD

Models GEN-1691A, GEN-1869A



- NOTES:**
1. ALL VOLTAGES MEASURED WITH VTVM, REFERENCED TO B-, WITH VOLUME CONTROL AT MAXIMUM, NO SIGNAL APPLIED.
 2. ALL VOLTAGES SHOWN ARE DC UNLESS OTHERWISE INDICATED.
 3. ALL RESISTORS ARE IN OHMS $\pm 20\%$, 1/2 WATT UNLESS OTHERWISE SPECIFIED.
 4. DC COIL RESISTANCE VALUES UNDER 1 OHM NOT SHOWN.
 5. CAPACITANCE VALUES UNDER 1 ARE IN MICROFARADS, MORE THAN 1 ARE IN MICROMICROFARADS UNLESS OTHERWISE INDICATED.
- TOLERANCE $\pm 100\%$, VOLTAGE RATING, DIBCS 800V UNLESS OTHERWISE SPECIFIED.



CHASSIS REMOVAL INFORMATION

1. Remove 4 screws holding the back and front sections of cabinet together, rear section may now be removed.
2. Remove volume and tuning knobs.
3. Remove 2 screws and flat washers at either side of chassis board and 1 screw on dial bracket.
4. Unsolder output transformer leads at speaker terminals.
5. Chassis may now be removed from cabinet.
6. To reassemble the chassis, proceed with the above steps in reverse sequence.

