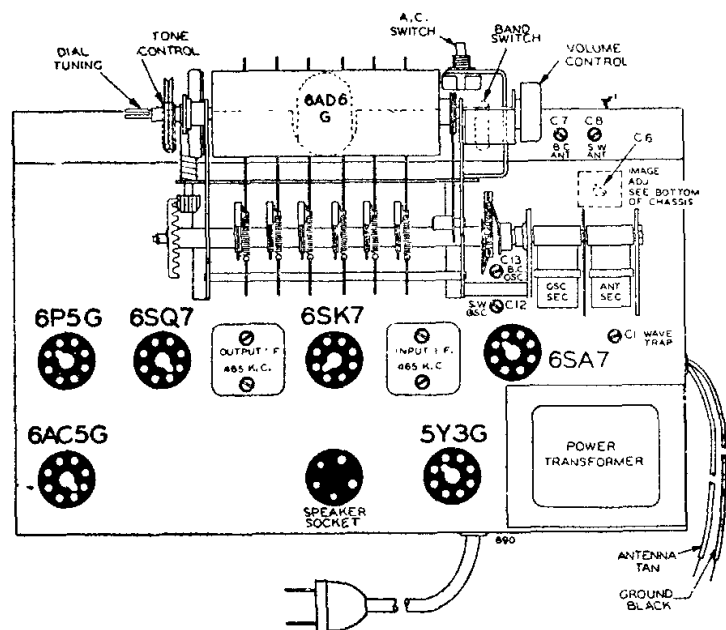


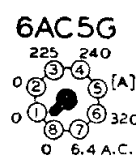
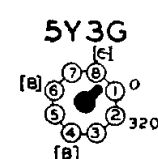
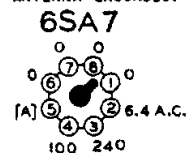
# Montgomery Ward Models 93BR713A and 62-713-A.



## BOTTOM VIEW OF CHASSIS

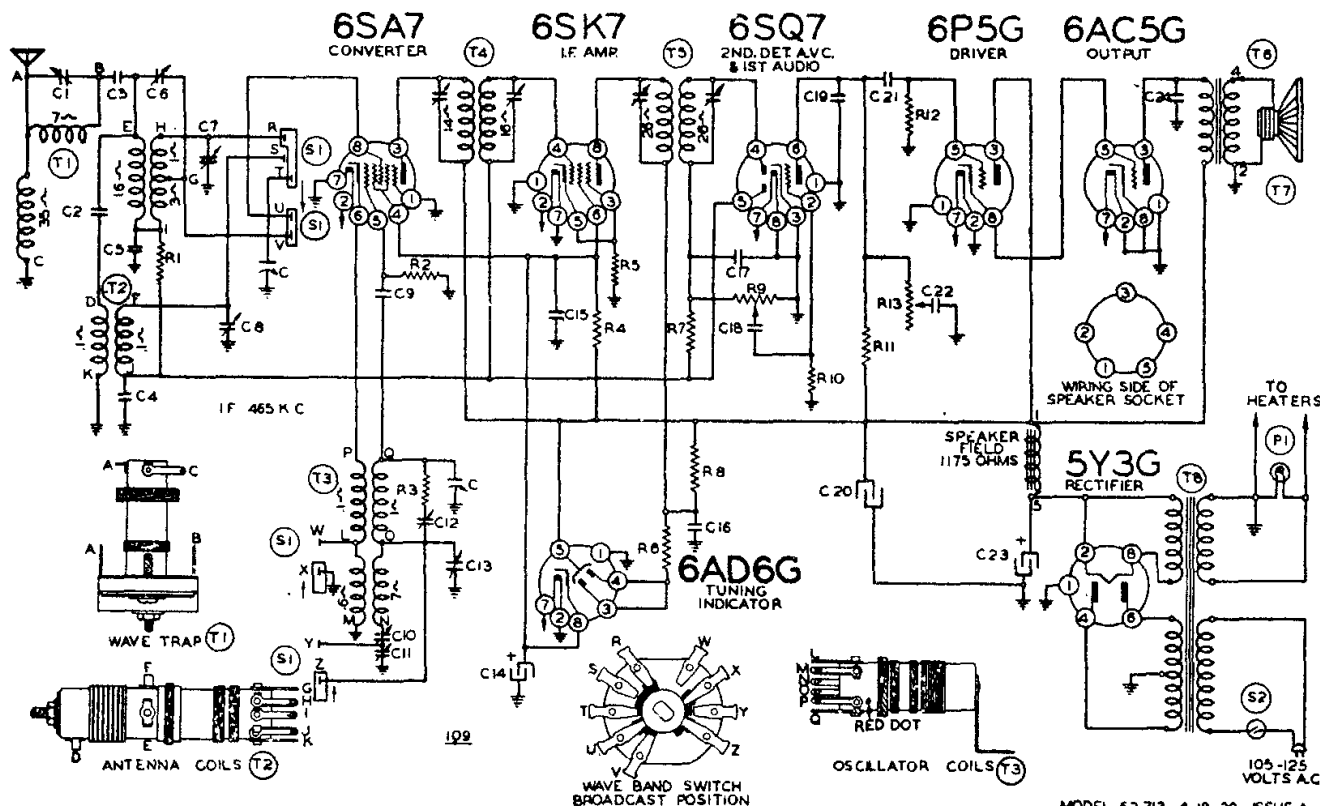
VOLTAGES MEASURED WITH 1000 OHM PER VOLT METER BETWEEN SOCKET TERMINALS AND CHASSIS. 117 VOLT LINE.

VOLUME CONTROL AT MINIMUM. ANTENNA GROUND.



## REAR OF CHASSIS

902



MODEL 62-713 4-18-39 ISSUE A

## Schematic Ref.

No. Part No.

Description

## RESISTORS

R1	BE13011	250M ohm-20%-1/2 w.
R2	BE13021	20M ohm-20%-1/2 w.
R3	BE130197	20 ohm-10%-1/2 w.
R4	BE130144	15M ohm-20%-1 watt
R5	BE130168	100 ohm-10%-1/2 w.
R6	BE130110	1 megohm-10%-1/10 w.
R7	BE1304	3 megohm-20%-1/2 w.
R8	BE13055	12M ohm-20%-2 watt
R9	BE101166	1 megohm-volume control
R10	BE130225	15 megohm-50-30%-1/2 w.
R11	BE1303	500M ohm-20%-1/2 w.
R12	BE13019	1 megohm-20%-1/2 w.
R13	BE101167	1 megohm-tone control

## CONDENSERS

C	BE102106B	2 gang variable condenser
C1	BE12467	Wave Trap Trimmer
C2	BE129140	.00016 mica-5%
C3	BE10011	.01 x 400 volt-25%
C4	BE1009	.05 x 200 volt-25%
C5	BE129131	.002775 mica-3%
C6	BE12468	Image Trimmer
C7	BE12475	B. C. Antenna Trimmer
C8	BE12475	S. W. Antenna Trimmer
C9	BE12960	.00015 Mica-20%

C10	BE12487	B. C. Series Pad
C11	BE12487	S. W. Series Pad
C12	BE12476	S. W. Oscillator Trimmer
C13	BE12476	B. C. Oscillator Trimmer
C14	BE11984	5. mfd. x 300 v. lytic
C15	BE1001	.1 x 400 v. 50-10%
C16	BE1001	.1 x 400 v. 50-10%
C17	BE1295	.0001 mica-20%
C18	BE10071	.004 x 600 v.-25%
C19	BE1292	.0005 mica-20%
C20	BE11984	15 mfd. x 350 v. lytic
C21	BE10026	.02 x 400 v.-25%
C22	BE10071	.004 x 600 v.-25%
C23	BE11984	10 mfd. x 450 v. lytic
C24	BE10019	.006 x 600 v.-25%

C7 and C8 in one unit. C10 and C11 in one unit. C12 and C13 in one unit. C14, C20, and C23 in one unit.

## PARTS

T1	BE108146	Wave Trap
T2	BE11122	Antenna Coil Complete
T3	BE11015	Oscillator Coil Complete
T4	BE10811H	Input I. F. Coil-465 kc.
T5	BE108132B	Output I. F. Coil-465 kc.
T6	BE10590	Output Transformer
T7	BE114161	6" Dynamic Speaker (1175 Ohm Field)
T8	BE104139D	Power Transformer
P1	BE10794	6-8 volt pilot light T44
S1	BE12576	Band Switch
S2	BE12577	AC Switch