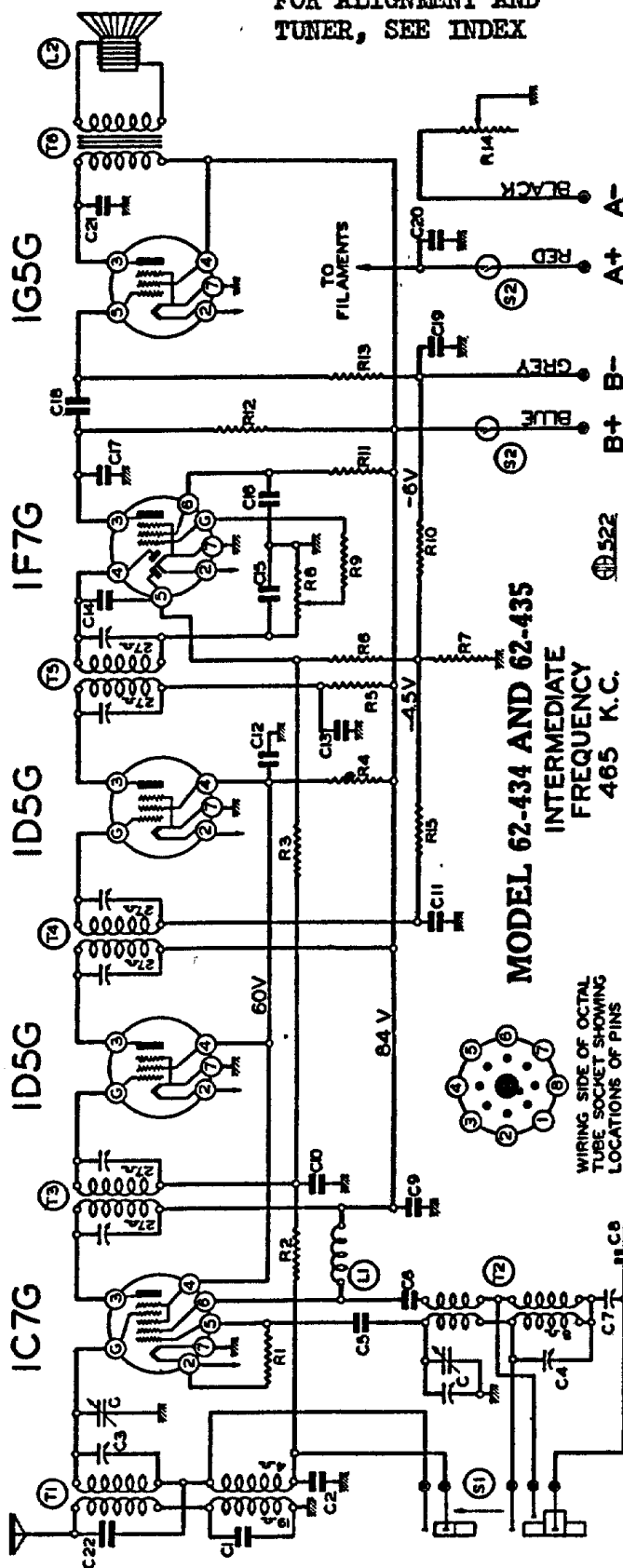


The tube complement of this chassis consists of the following tubes.

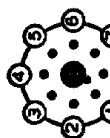
The type and function of each tube is as follows:

- 1—Type 1C7G Pentagrid Mixer, First Detector-oscillator
- 1—Type 1D5G Remote Cut-Off Pentode, 1st I.F. Amplifier (465 K. C.)
- 1—Type 1D5G Remote Cut-Off Pentode, 2nd I.F. Amplifier (465 K. C.)
- 1—Type 1F7G Duplex Diode Pentode Second Detector, A. V. C. and First Audio.
- 1—Type 1G5G Pentode Output Amplifier.

FOR ALIGNMENT AND
TUNER, SEE INDEX



MODEL 62-434 AND 62-435 INTERMEDIATE FREQUENCY 465 K.C.



WIRING SIDE OF OCTAL
TUBE SOCKET SHOWING
LOCATIONS OF PINS

| Part No. | Description |
|----------|--------------------------------------|
| R1 | 100M ohm - 1/3 w. 20% |
| R2 | 100M ohm - 1/3 w. 20% |
| R3 | 100M ohm - 1/3 w. 20% |
| R4 | 7500 ohm - 1/3 w. 20% |
| R5 | 3000 ohm - 1/3 w. 20% |
| R6 | 1 megohm - 1/3 w. 20% |
| R7 | 300 ohm - 1/3 w. 10% |
| R8 | 250M ohm - volume control |
| R9 | 50M ohm - 1/3 w. 20% |
| R10 | 100 ohm - 1/3 w. 20% |
| R11 | 1 megohm - 1/3 w. 20% |
| R12 | 250M ohm - 1/3 w. 20% |
| R13 | 1 megohm - 1/3 w. 20% |
| R14 | 1 megohm - 1/3 w. 20% |
| R15 | 3.2 ohm - Filament Rheostat |
| C1 | 1 megohm - 1/3 w. 20% |
| C2 | 2 gang variable condenser |
| C3 | .0001 mica 10% |
| C4 | .05 x 200 v. 25% |
| C5 | 2-20 mmf. Adj. Cond. |
| C6 | .00005 Mica 10% |
| C7 | .002 x 600 v. 25% |
| C8 | 580 mmf. Working Capacity-Series Pad |
| C9 | .003 minimum 2-1/2% |
| C10 | .25 x 200 v. 20% |
| C11 | .02 x 400 v. 25% |
| C12 | .05 x 200 v. 25% |
| C13 | .25 x 200 v. 20% |
| C14 | .1 x 200 v. 25% |
| C15 | .00015 Mica 20% |
| C16 | .1 x 200 v. 25% |
| C17 | .0002 Mica 20% |
| C18 | .01 x 400 v. 25% |

FREQUENCY RANGE
Broadcast 535 to 1750 K.C. (Kilocycles)
Short Wave 5.5 to 18.1 M.C. (Megacycles)

- PARTS**
- C19 119-52 25.0 mfd. 25 w.v.
 - C20 100-50 .25 x 200 v. 20%
 - C21 100-71 .004 x 600 v. 25%
 - C22 120-175 .00004 Coupling Capacity
 - T1 111-99 BC - SW Antenna coil complete
 - T2 110-80 BC - SW Oscillator coil complete
 - T3 108-116 Input I.F. Complete - 465 kc.
 - T4 108-79C Interstage I.F. Complete - 465 kc.
 - T5 108-79C Output I.F. Complete
 - T6 105-69 Output Transformer
 - L1 123-3 11.F. "B" Choke
 - L2 114-115 6" P.M. Speaker
 - S1 125-46 Band Switch
 - S2 Off-on switch on volume control - (D.P.D.T.).

Voltages taken from different points of circuit to chassis are measured with volume control full on, all tubes in their sockets and speaker connected, with a volt meter having a resistance of 1000 ohms per volt.

All voltages as indicated on diagram, are measured with a new set of batteries.

Resistances of coil windings are indicated in ohms on the schematic circuit diagram.

To check for open by-pass condensers, shunt each condenser with another condenser of the same capacity and voltage rating, which is known to be good, until the defective unit is located.

The approximate current consumption is as follows:
"A"—420 ma., "B"—16 ma.

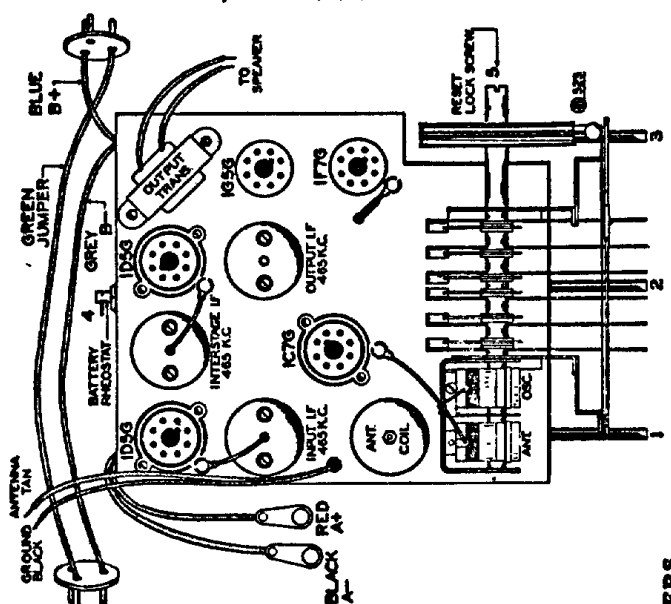


FIG. 1—TOP VIEW

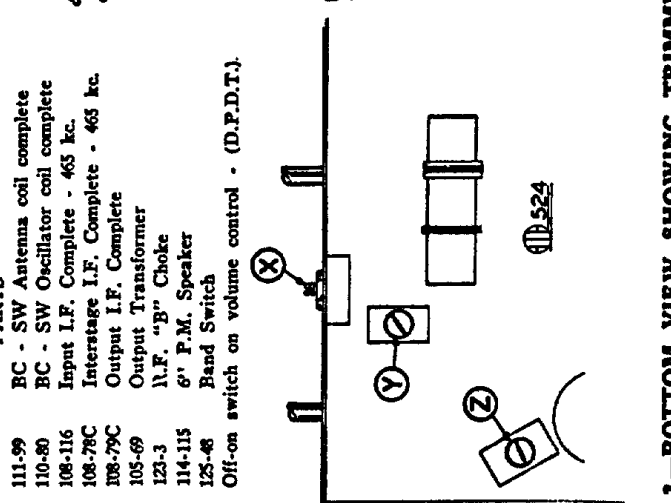


FIG. 3.—BOTTOM VIEW SHOWING TRIMMERS