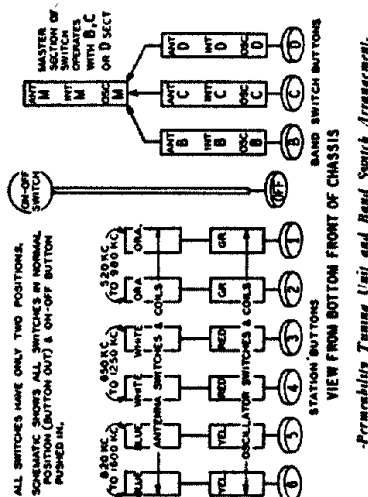


# MONTGOMERY-WARD & CO. MODELS 62-401, 62-1100



Interlocking Tuning Unit and Read Switch Arrangement.

## Voltagers at Sockets

The voltagers at sockets are shown on the schematic circuit diagram. Unless otherwise specified, the voltage indicated is between the socket terminal and ground.

These voltagers are read under the following conditions:

- Line Voltage—117.
- Volume Control—Maximum.
- Antenna Shorted to Ground.
- Readings taken with 1000 ohm-per-volt meter.

## Phonograph Connections

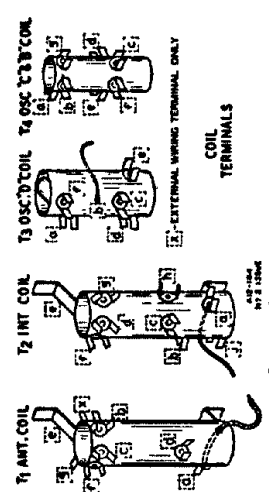
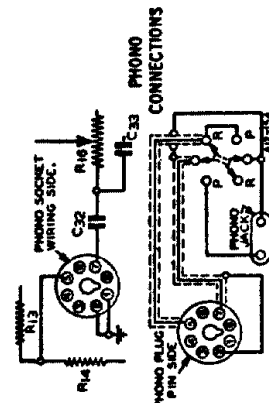
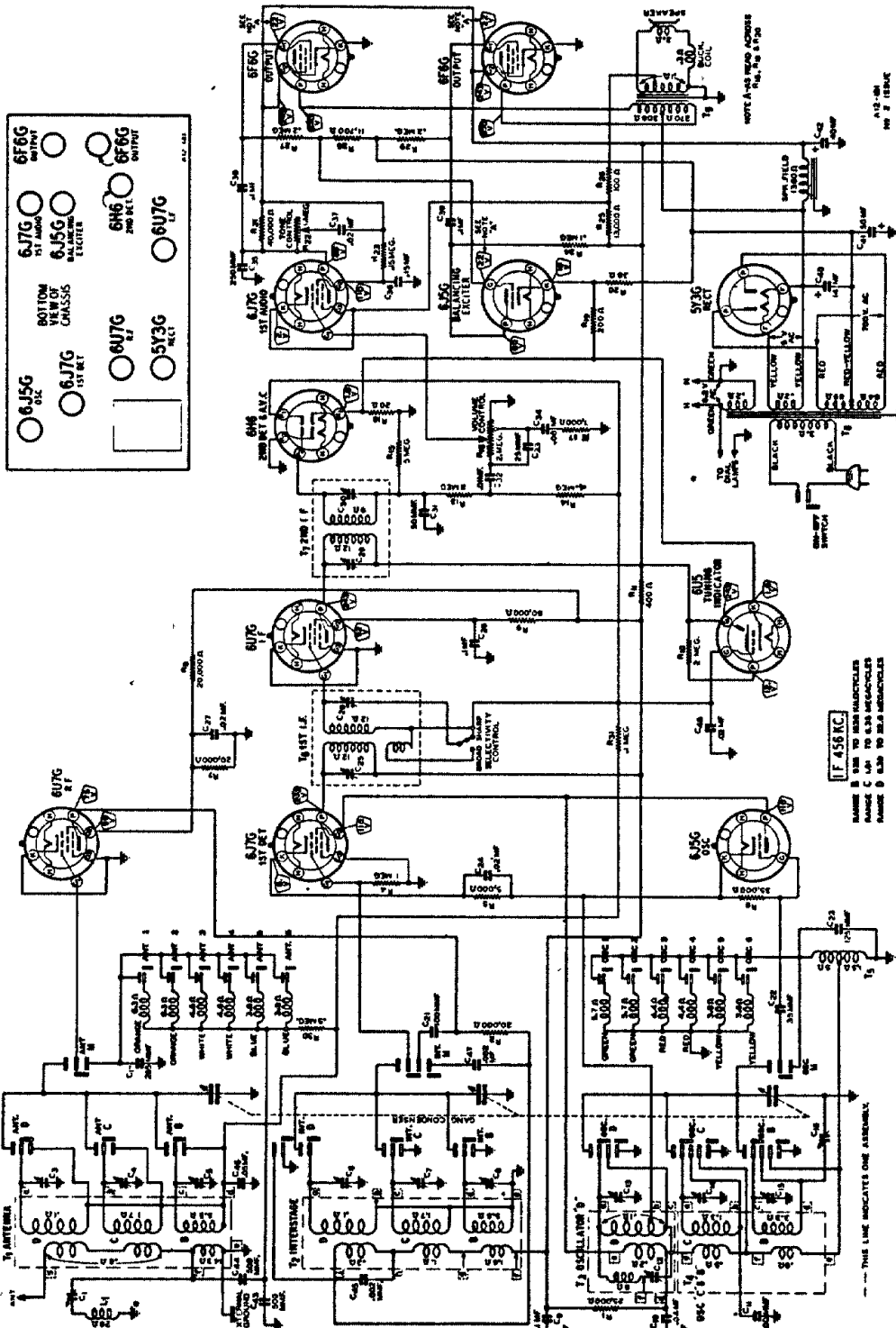
Phonograph connections are made as shown in the schematic circuit diagram. On the back panel of the chassis base is a round knockout 1 1/4 inches in diameter. An octal base socket is then mounted in this knockout opening.

A phono cable assembly may then be purchased (See parts list). On one end of this cable is an octal plug and on the other end is a phonograph-radio switch and double tip jack.

**ATTACHING DIAL POINTER—** Tune in a 1500 KC signal. Move the pointer to the 1500 KC mark on the dial and clamp it tightly over the fabric tubing on the cord.

## Twenty-Five Cycle Models

The twenty-five cycle receiver differs from the sixty cycle receiver only in the fact that a different power transformer is used.



JUNE, 1939

11 TUBE • 3 BAND • ALL WAVE  
WITH AUTOMATIC TUNING

Power Consumption - 100 Watts (At 117 volts 60 cycles)	Speaker	Intermediate Frequency	456 KC.
Power Output - 8.5 Watts Undistorted	Tuning Frequency Range	12" Dynamic	
Selectivity - 110 Watts Maximum (Sharp)	B Range (Manual Tuning)	528 to 1600 KC.	
Sensitivity	C Range (Manual Tuning)	1810 to 8350 KC.	
B Range (Manual Tuning)	D Range (Manual Tuning)	8300 to 23000 KC.	
2.0 Microvolts Average	Buttons 1, 6, 2 (Automatic Tuning)	528 to 1600 KC.	
2.0 Microvolts Average	Buttons 3, 4, 4 (Automatic Tuning)	830 to 1250 KC.	
2.0 Microvolts Average	Buttons 5, 6, 6 (Automatic Tuning)	830 to 1600 KC.	

Schematic Circuit Diagram, Coil Terminals, and Phono Connections.