

WARDS AIRLINE RADIO

MODELS 62-425 and 62-265

The tube complement of this chassis is as follows:

- 1 Type 6A7—pentagrid oscillator and first detector.
- 1 Type 78—remote cut-off pentode as I.F. amplifier.
- 1 Type 75—duplex diode triode as diode detector, A.V.C. and A.F.
- 1 Type 41—pentode output tube.
- 1 Type 5Z4 or 5Y3—high vacuum rectifier.

ALIGNING INSTRUCTIONS:

CAUTION:—No aligning adjustments should be attempted without first thoroughly checking over all other possible causes of trouble, such as poor installations, open or grounded antenna systems, low line voltages, defective tubes, condensers and resistors. In order to properly align this chassis, an oscillator (generator) is absolutely necessary. No aligning adjustments should be attempted with the chassis in the cabinet. Remove the knobs and the two bolts which are used to fasten the chassis.

All adjustments should be made with a non-metallic screw driver.

RESONANCE INDICATOR:

Use as a resonance indicator an output meter connected across the primary of the speaker input transformer, or by

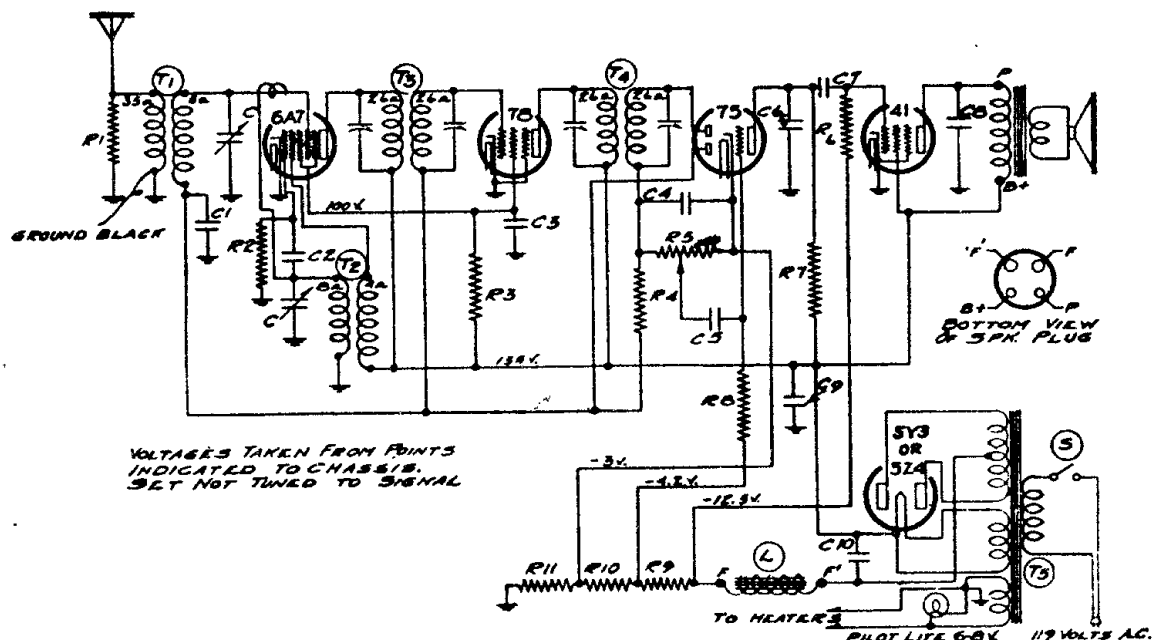
means of an adapter between the plate and screen terminals of the type 41 output tube. Use only enough signal to get a readily readable output. A low range output meter or the low scale of a multi-range voltmeter should be used.

ALIGNING I. F. TRANSFORMERS: (465 K. C.)

Connect external oscillator which has been adjusted to 465 kilocycles in series with .1 mfd. condenser, to the control grid cap of the type 6A7 tube. Ground the chassis to the oscillator. Adjust output I.F. transformer (No. 108-83) and input I.F. transformer (No. 108-82) to resonance. See label on bottom of cabinet for location of these transformers.

R. F. ALIGNMENT: (535-1720 K. C.)

1. With gang condenser in its minimum capacity position, plates entirely out of mesh, connect an external oscillator in series with a 200 mmf. condenser to an antenna and black ground leads and make the following adjustments:
 - (a) With external oscillator set at 1720 kilocycles, adjust oscillator trimmer (rear of gang condenser).
 - (b) Re-set external oscillator to 1400 kilocycles, rotate condenser, pick up oscillator signal and adjust antenna trimmer to resonance (front section of gang condenser).
 - (c) Check sensitivity at 600 and 1000 kilocycles.



CONDENSERS			
Part No.	Schematic Reference	Description	No. Used In Set
BE 100-11	C-5:C-7	.01 x 400 Volt Tubular	2
BE 100-19	C-8	.006 x 600 Volt Tubular	1
BE 100-1	C-3	.1 x 400 Volt Tubular	1
BE 100-22	C-1	.05 x 200 Volt Tubular	1
BE 119-24	C-9:C-10	Dual 5 mfd. x 200 Volt Electrolytic	1
BE 129-5	C-6	.0001 Mica—Type MT—20%	1
BE 129-12	C-2:C-4	.00025 Mica—Type MT—20%	2

RESISTORS			
Part No.	Schematic Reference	Description	No. Used In Set
BE 106-29	R-9:R-10 (R9, 200 ohm): (R10, 33 ohm): (R11, 100 ohm)	Metal clad resistor	1
BE 130-17	R-1	10M Ohm-1/3 Watt-20%-20 V. Carbon	1
BE 130-109	R-3	7500 Ohm-1/2 Watt-20%-10 V. Carbon	1
BE 130-117	R-2	50M Ohm-1/10 Watt-20%-50 V. Carbon	1
BE 130-118	R-6	600M Ohm-1/3 Watt-20%-100 V. Carbon	1
BE 130-121	R-4:R-8	3.2 Meg Ohm-1/3 Watt-30%-100 V. Carbon	2
BE 130-122	R-7	210M Ohm-1/10 Watt-30%-20% V. Carbon	1

COILS			
Part No.	Schematic Reference	Description	No. Used In Set
BE 108-82	T3	Input I.F. Coil Assem. Comp. with Can.	1
BE 108-83	T4	Output I.F. Coil Assem. Comp. with Can.	1
BE 110-46	T2	Oscillator Coil Assembly Complete	1
BE 111-58	T1	Antenna Coil Assembly Complete	1

SOCKETS			
Part No.	Schematic Reference	Description	No. Used In Set
BE 121-6		Six Prong Socket—Marked "41"	1
BE 121-6		Six Prong Socket—Marked "75"	1
BE 121-6		Six Prong Socket—Marked "78"	1
BE 121-7		Seven Prong Socket—Marked "6A7"	1
BE 121-9		Four Prong Socket—Marked "SPKR"	1
BE 121-16		Five Prong Socket—Marked "5Z4"(Octal)	1

MISCELLANEOUS			
Part No.	Schematic Reference	Description	No. Used In Set
BE 101-54	R-5	Volume Control and Switch (1 meg ohm)	1
BE 102-33	C	Two Gang Variable Condenser	1
BE 107-39		Line Cord & Plug	1
BE 128-8		Ivory Bakelite Knob (Model 62-265)	2
BE 131-2		Brown Bakelite Knob	1
BE 131-8		Spring for above knob	2

DIAL PARTS LIST			
Part No.	Schematic Reference	Description	No. Used In Set
BE 107-28		Pilot Light Socket	1
BE 112-15		Dial Crystal only—less escutcheon	1
BE 112-160		Dial Pointer Complete with screw	1
BE 112-164		Brown Bakelite Escutcheon complete with crystal	1
BE 112-226		Ivory Bakelite Escutcheon complete with glass (Model 62-265)	1
BE 112-167A		Dial Scale	1
BE 116-13		6-8 Volt, T-51 Pilot Light Bulb	1
BE 117-59		Pointer Bushing Stud	1
BE 117-60		Pointer Bushing Assembly	1
BE 117-61		Drive Pulley	1
BE 117-68		Dial Bracket	1
BE 120-7A		Take-up Spring	1
BE 131-52		Drive Belt	1
BE 134-9		Horse Shoe Washer	1