

Montgomery Ward, Chicago, Ill. Models 04BR-675A and 04BR-676A

Schematic
Diagram Part
Ref. No. No.

Description

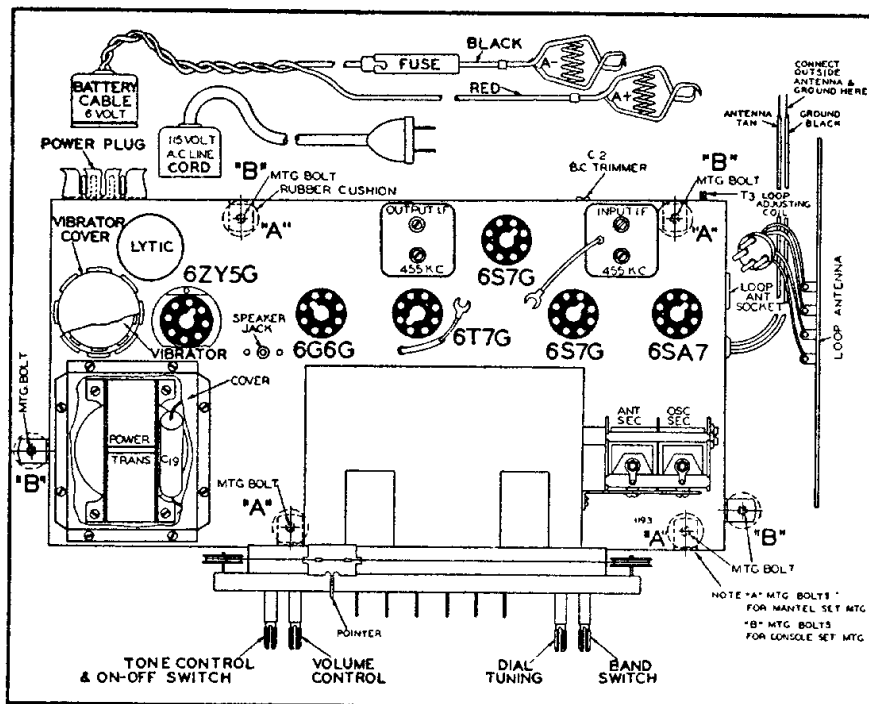
RESISTORS

R1	BE130193	3M ohm— $\frac{1}{3}$ w.
R2	BE130276	10 ohm— $\frac{1}{3}$ w.
R3	BE13019	1 megohm— $\frac{1}{3}$ w.
R4	BE130236	30M ohm— $\frac{1}{3}$ w.
R5	BE13070	500 ohm— $\frac{1}{3}$ w.
R6	BE13067	9M ohm— $\frac{1}{3}$ w.
R7	BE130157	12M ohm— $\frac{1}{3}$ w.
R8	BE13019	1 megohm— $\frac{1}{3}$ w.
R9	BE130170	3 megohm— $\frac{1}{3}$ w.
R10	BE13084	200 ohm— $\frac{1}{3}$ w.
R11	BE130192	2M ohm— $\frac{1}{3}$ w.
R12	BE13020	100M ohm— $\frac{1}{3}$ w.
R13	BE101227	Volume Control
R14	BE130233	60 ohm— $\frac{1}{3}$ w.
R15	BE130233	60 ohm— $\frac{1}{3}$ w.
R16	BE130223	10 megohm— $\frac{1}{3}$ w.
R17	BE1303	500M ohm— $\frac{1}{3}$ w.
R18	BE101228	2 megohm Tone Control
R19	BE130266	200M ohm— $\frac{1}{3}$ w.
R20	BE13079	400 ohm— $\frac{1}{3}$ w.
R21	BE130222	350 ohm— $\frac{1}{3}$ w.
R22	BE130235	1500 ohm— $\frac{1}{3}$ w.

CONDENSERS

C	BE102133	2 Gang Variable Condenser
C1	BE124116	S.W. Antenna Trimmer
C2	BE124141	B.C. Antenna Trimmer
C3	BE12921	.0002 mica
C4	BE124142	S.W. Oscillator Trimmer
C5	BE124142	B.C. Oscillator Trimmer
C6	BE124140	B.C. Pad Trimmer
C7	BE124140	S.W. Pad Trimmer
C8	BE12938	.00005 mica
C9	BE10048	.25 x 200 v.
C10	BE1009	.05 x 200 v.
C11	BE10013	.05 x 400 v.
C12	BE1292	.0005 mica
C13	BE10031	.5 x 120 v.
C14	BE10031	.5 x 120 v.
C15	BE10031	.5 x 120 v.
C16	BE129161	.0001 mica
C17	BE129161	.0001 mica
C18	BE10025	.002 x 600 v.
C19	BE10073	.008 x 1200 v.
C20	BE1292	.0005 mica
C21	BE10026	.02 x 400 v.
C22	BE100106	.004 x 600 v.
C23	BE10020	.1 x 200 v.
C24	BE100106	.004 x 600 v.
C25	BE119111	20 Mfd. Lytic x 20 w.v.
C26	BE119111	40 Mfd. Lytic x 200 w.v.
C27	BE119111	20 Mfd. Lytic x 200 w.v.
C28	BE119111	20 Mfd. Lytic x 200 w.v.
C29	BE10020	.1 x 200 v.

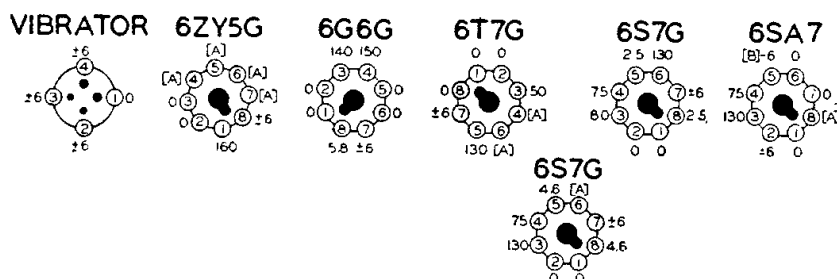
C4 and C5 in one unit.
C16 and C17 in one unit.
C6 and C7 in one unit.
C25, C26, C27 and C28 in one unit



BOTTOM VIEW OF CHASSIS

VOLTAGES MEASURED WITH 1000 OHM PER VOLT VOLTMETER
BETWEEN SOCKET TERMINALS AND CHASSIS
LOOP PLUGGED INTO CHASSIS AND SET TUNED OFF SIGNAL
SET OPERATING ON 6.3 VOLT STORAGE BATTERY

[A] CANNOT BE MEASURED WITH VOLTMETER.
[B] OSCILLATOR VOLTAGE MEASURED WITH R.F. CHOKE
IN SERIES WITH VOLTMETER LEAD



REAR OF CHASSIS