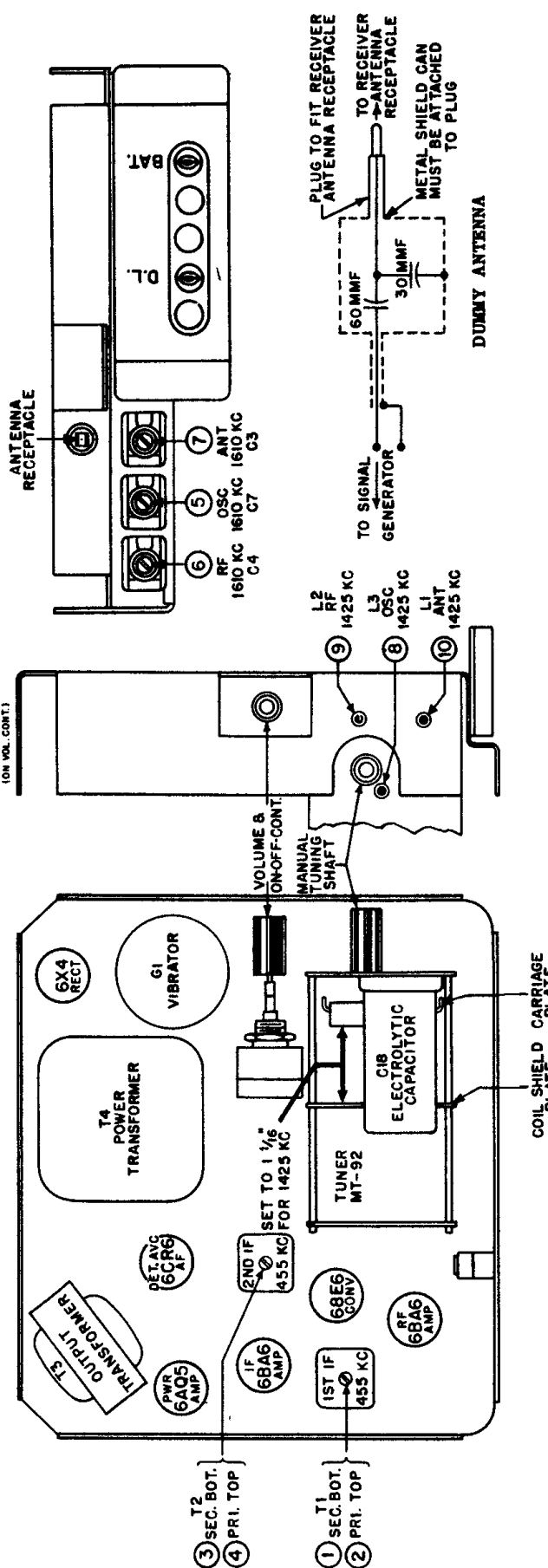
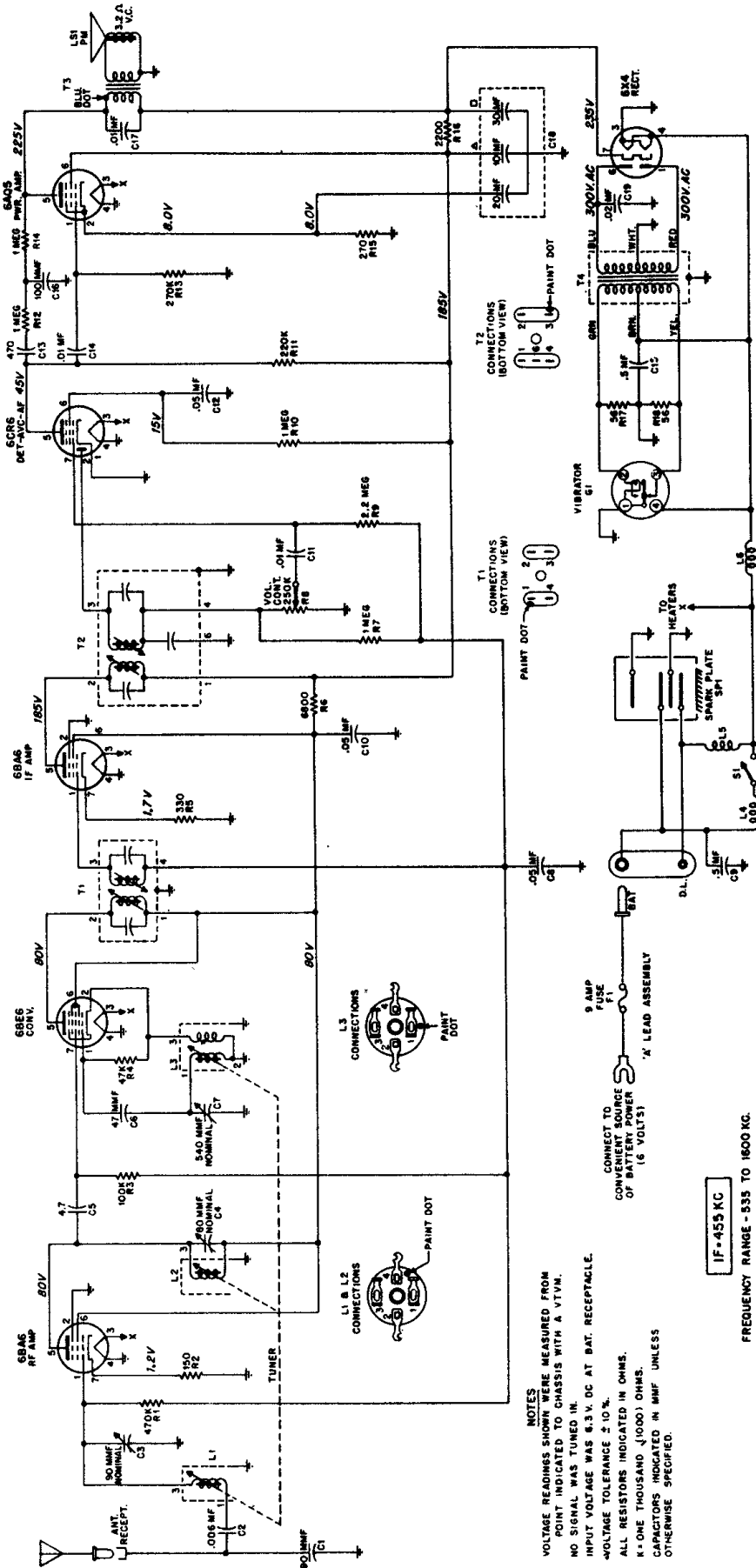


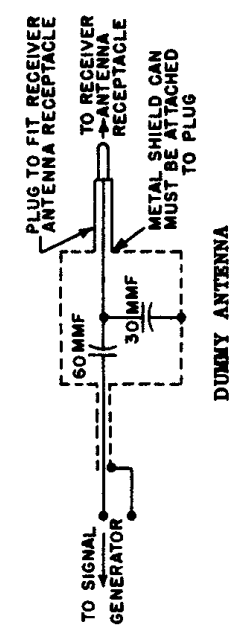
MOTOROLA

MODEL 504



NOTES
VOLTAGE READINGS SHOWN WERE MEASURED FROM
POINT INDICATED TO CHASSIS WITH A VTVM.
NO SIGNAL WAS TUNED IN.
INPUT VOLTAGE WAS 6.3 V. DC AT BAT. RECEPTACLE.
VOLTAGE TOLERANCE $\pm 10\%$.
ALL RESISTORS INDICATED IN OHMS.
K = ONE THOUSAND (1000) OHMS.
CAPACITORS INDICATED IN MMF UNLESS
OTHERWISE SPECIFIED.

IF-455 KC
FREQUENCY RANGE - 535 TO 1600 KC.



DUMMY ANTENNA