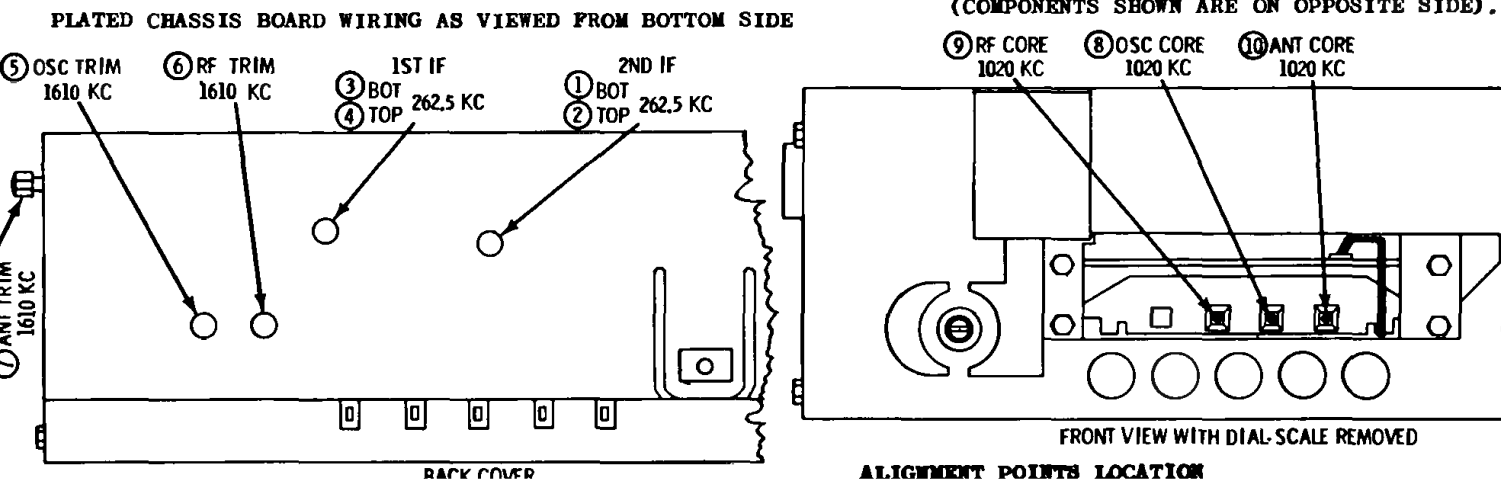
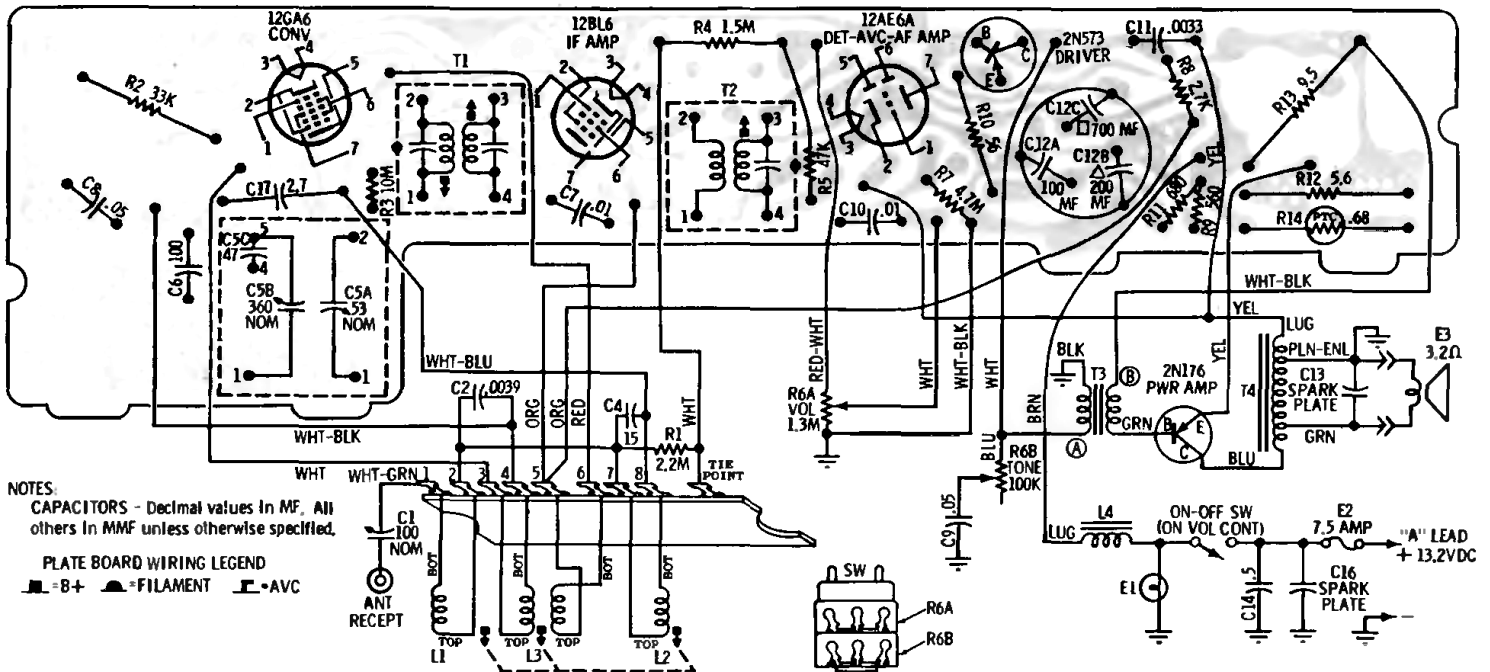
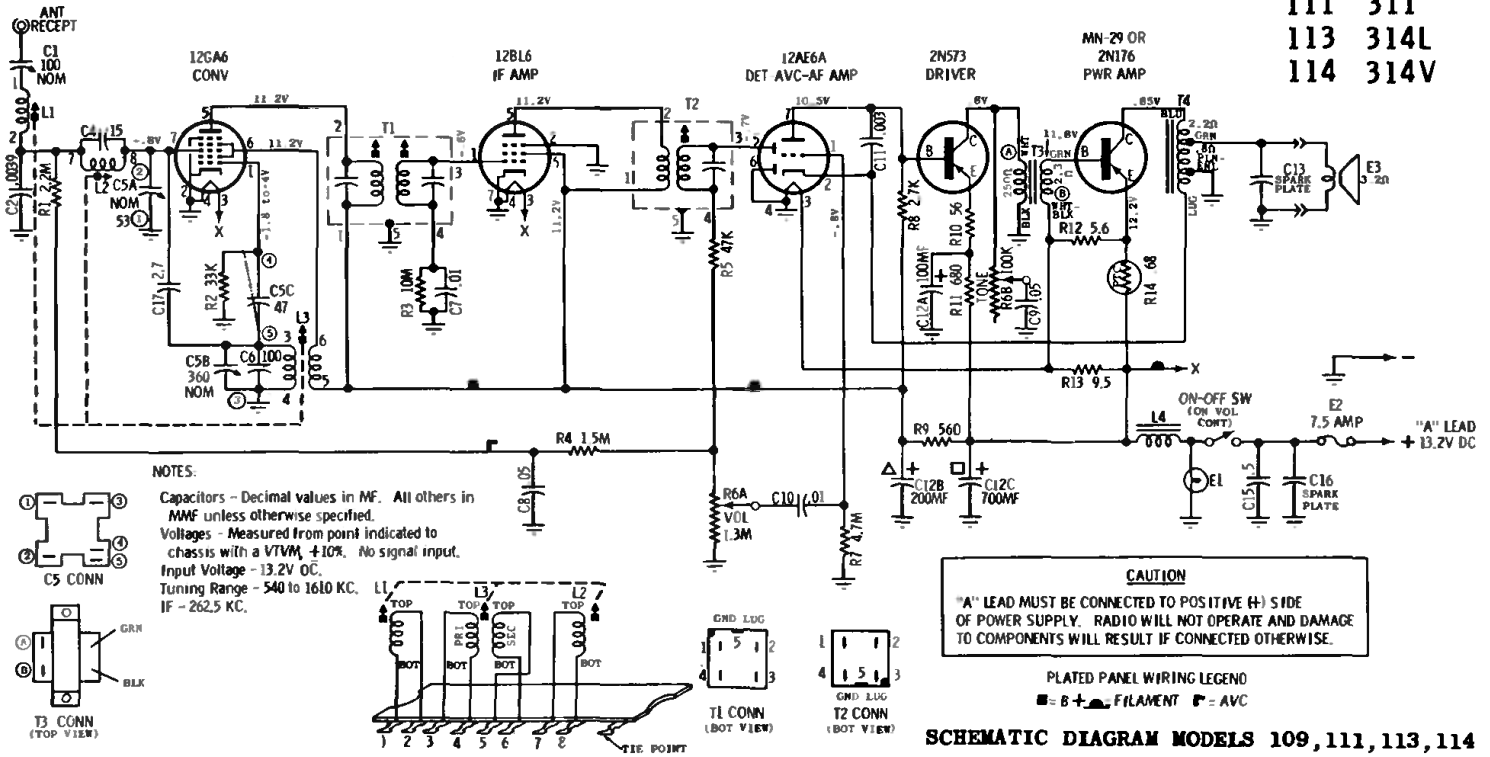


# MOTOROLA INC.

## MODELS

MoPar	
109	309
111	311
113	314L
114	314V



# MOTOROLA Models 109, 111, 113, 114, 309, 311, 314L, 314V

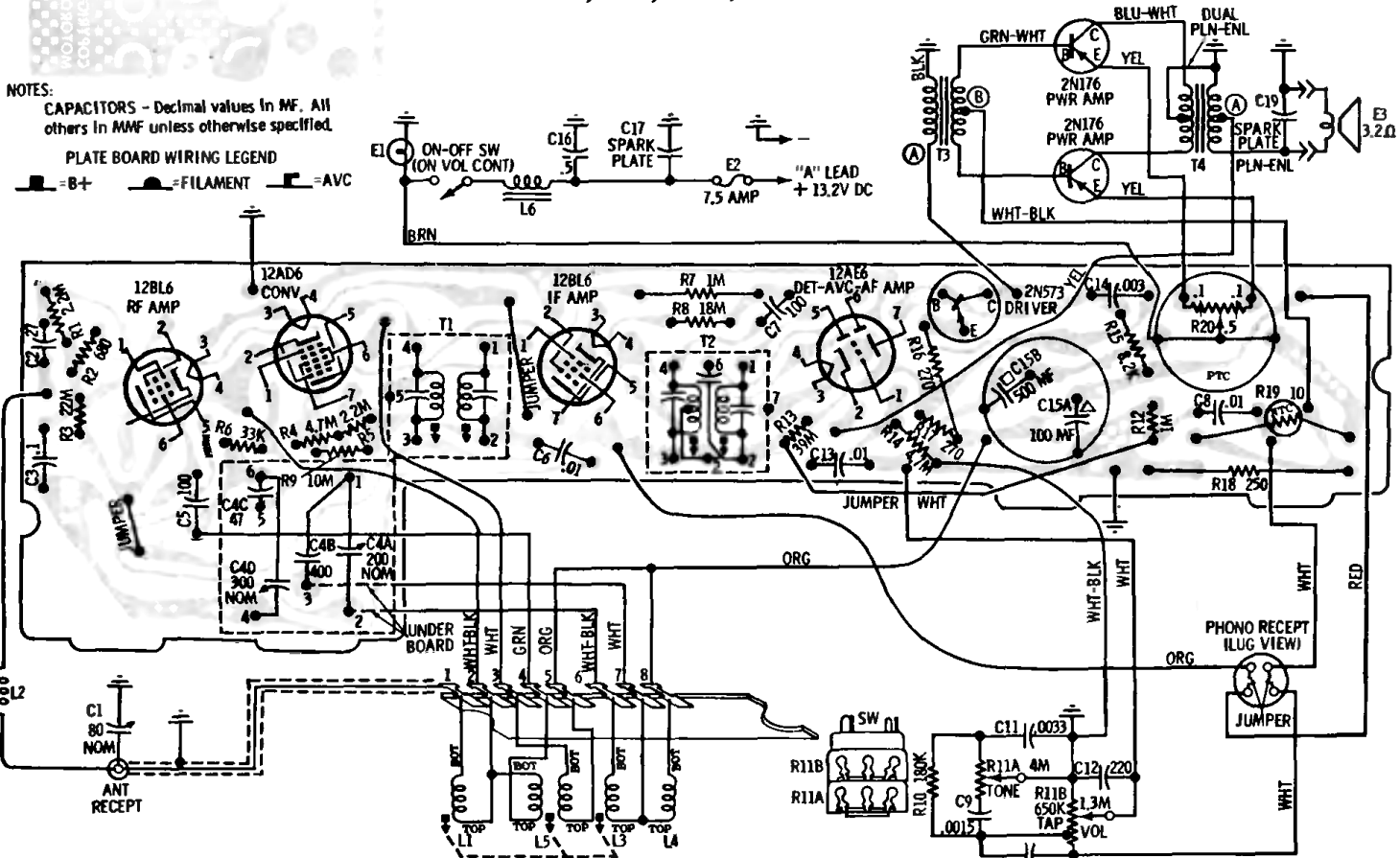
## PLATED CHASSIS BOARD GROUND CONNECTIONS AS SEEN THRU BOARD FROM WIRING SIDE MODELS 309, 311, 314L, 314V

### NOTES:

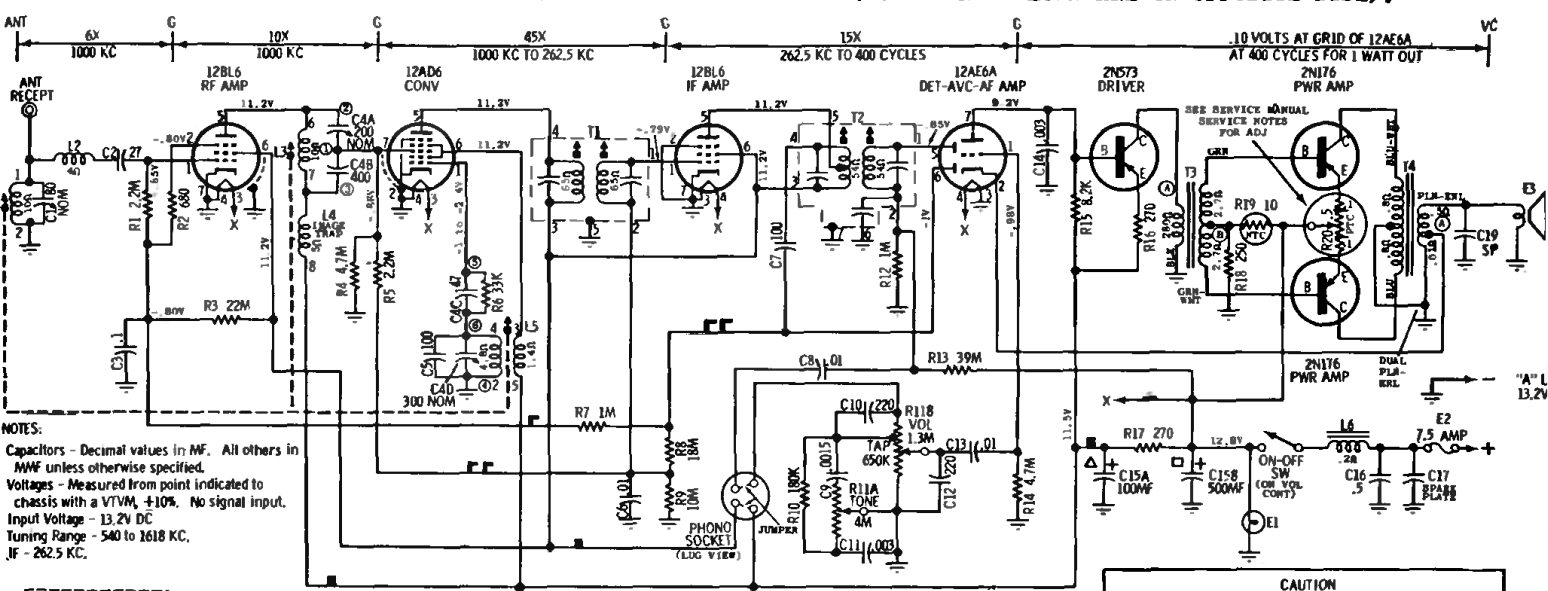
CAPACITORS - Decimal values in MF. All others in MMF unless otherwise specified.

### PLATE BOARD WIRING LEGEND

■ = B+    ■ = FILAMENT    ■ = AVC



## PLATED CHASSIS BOARD WIRING AS VIEWED FROM BOTTOM SIDE (COMPONENTS SHOWN ARE ON OPPOSITE SIDE).

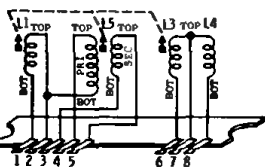


### NOTES:

Capacitors - Decimal values in MF. All others in MMF unless otherwise specified.  
Voltages - Measured from point indicated to chassis with a VTVM,  $\pm 10\%$ . No signal input.  
Input Voltage - 13.2V DC  
Tuning Range - 540 to 1618 KC.  
IF - 262.5 KC.

### PLATED PANEL WIRING LEGEND

■ = B+    ■ = FILAMENT    ■ = RF AVC  
■ = IF, CONV AVC



C4 CONN (LUG VIEW)

I1 CONN (LUG VIEW)

I2 CONN (LUG VIEW)

T3 CONN

T4 CONN

TRANSISTOR CONNECTIONS (LUG VIEW)

**CAUTION**  
"A" LEAD MUST BE CONNECTED TO POSITIVE (+) SIDE OF POWER SUPPLY. RADIO WILL NOT OPERATE AND DAMAGE TO COMPONENTS WILL RESULT IF CONNECTED OTHERWISE.

