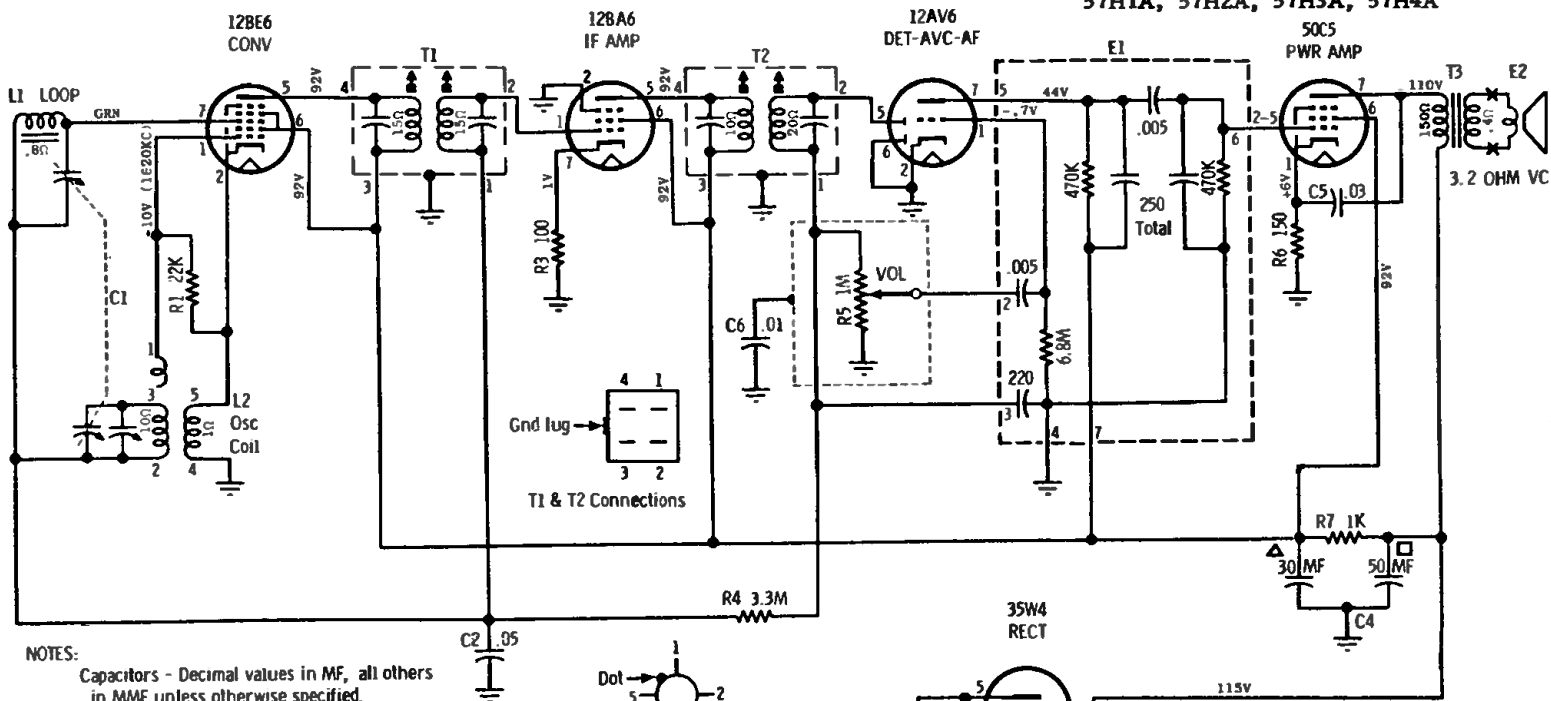


MOTOROLA INC.

CHASSIS HS-523, HS-565,

Models 57H1, 57H2, 57H3, 57H4 57H1A, 57H2A, 57H3A, 57H4A

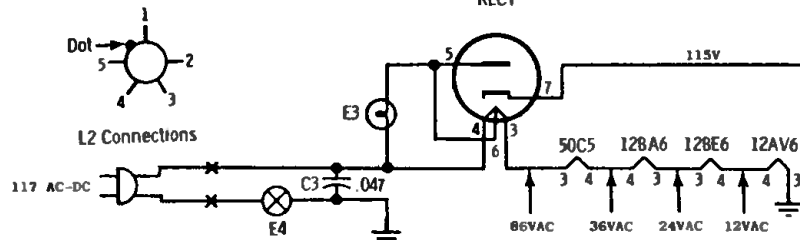


NOTES:

Capacitors - Decimal values in MF, all others in MMF unless otherwise specified.

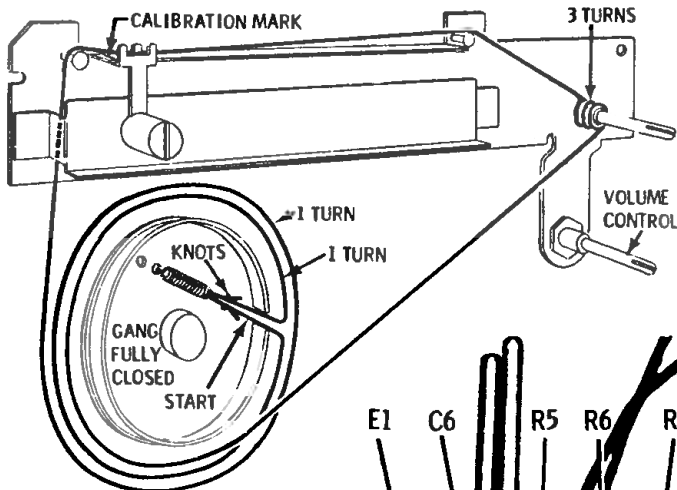
Voltages - Measured from point indicated to ground with a VTVM. No signal input.
Input voltage - 117 AC \pm 10%.

Tuning Range - 535 to 1620 KC.
IF - 455 KC.



DISASSEMBLY INSTRUCTIONS

1. Pry rear cover off with a small screwdriver by inserting screwdriver between cabinet and top center edge of cover. Care should be taken not to damage cabinet with screwdriver.
2. Pull knobs off from front of receiver.
3. Compress mounting bracket and slide ON-OFF switch and pilot light assembly from retaining slots in cabinet.
4. Remove screw from interlock plug and remove interlock plug.
5. Remove three screws which hold chassis in cabinet.



DIAL STRINGING

MODELS

57H1 Ebony
57H2 White
57H3 Green
57H4 Blue

CHASSIS
HS-523

