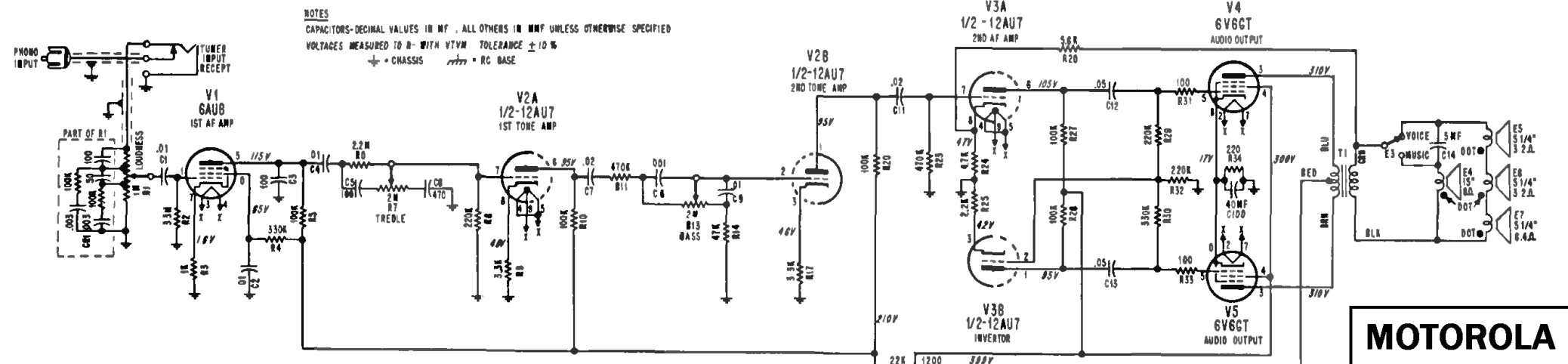
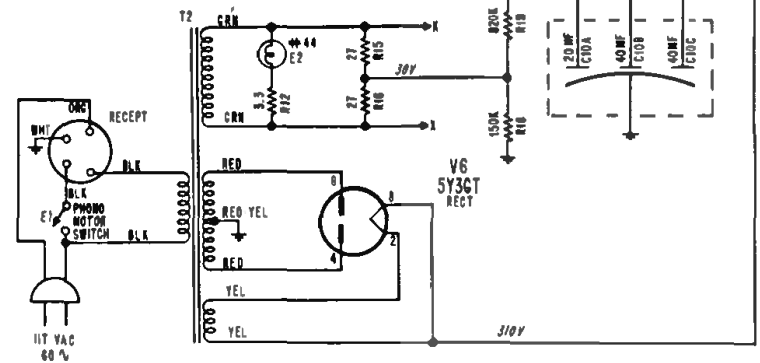
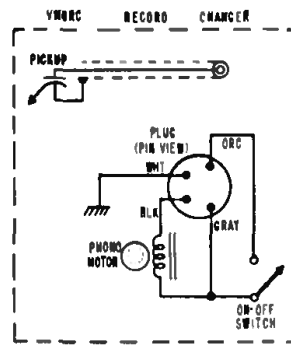


NOTES
CAPACITORS-DECIMAL VALUES IN MF, ALL OTHERS IN MMF UNLESS OTHERWISE SPECIFIED
VOLTAGES MEASURED TO B- WITH VTVM TOLERANCE $\pm 10\%$
+ = CHASSIS - = RC BASE



MOTOROLA

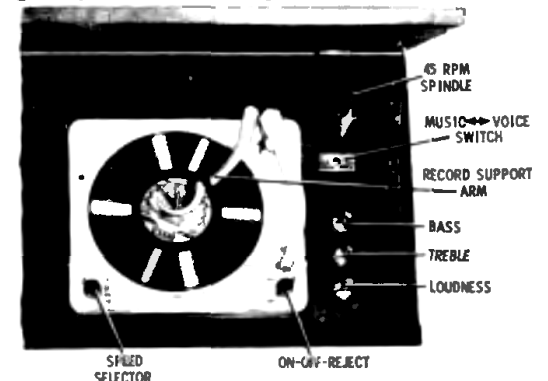
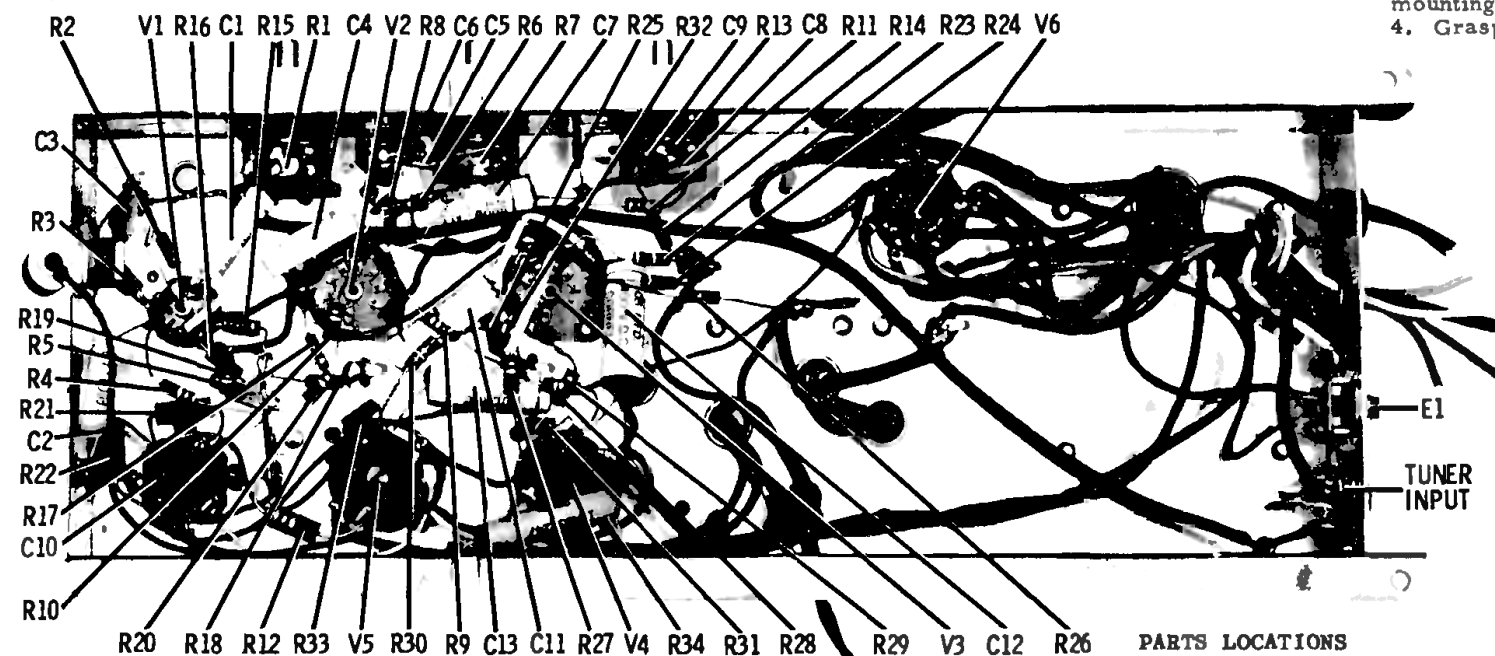


To Remove Chassis From Cabinet

1. Remove VOICE-MUSIC switch from cabinet.
2. Pull off three control knobs.
3. Remove cabinet back cover.
4. Disconnect leads from changer and speakers.
5. Remove two screws that mount chassis to cabinet and slide chassis from cabinet.

To Remove Record Changer From Cabinet

1. Remove cabinet back cover.
2. Disconnect leads from changer.
3. Remove "C" washer and flat washer from ends of the two mounting screws.
4. Grasp changer by base and lift up.



MOTOROLA INC.

| MODELS | CHASSIS |
|--------------------|---------|
| 66HF1 Mahogany | HS-475 |
| 66HF1B Limed Oak | HS-475 |
| 66HF1GM Grey Mahog | HS-475 |