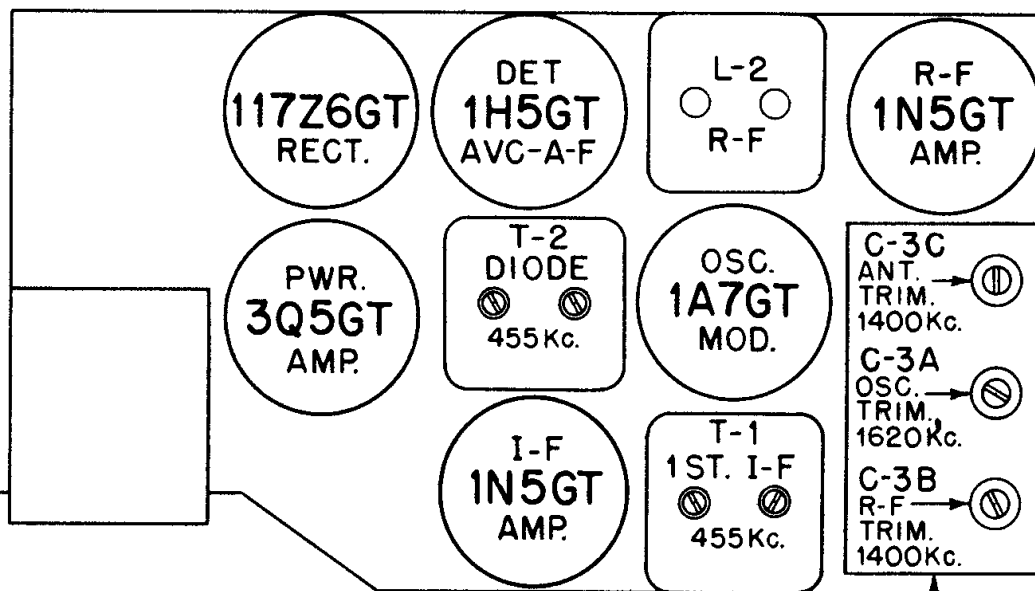
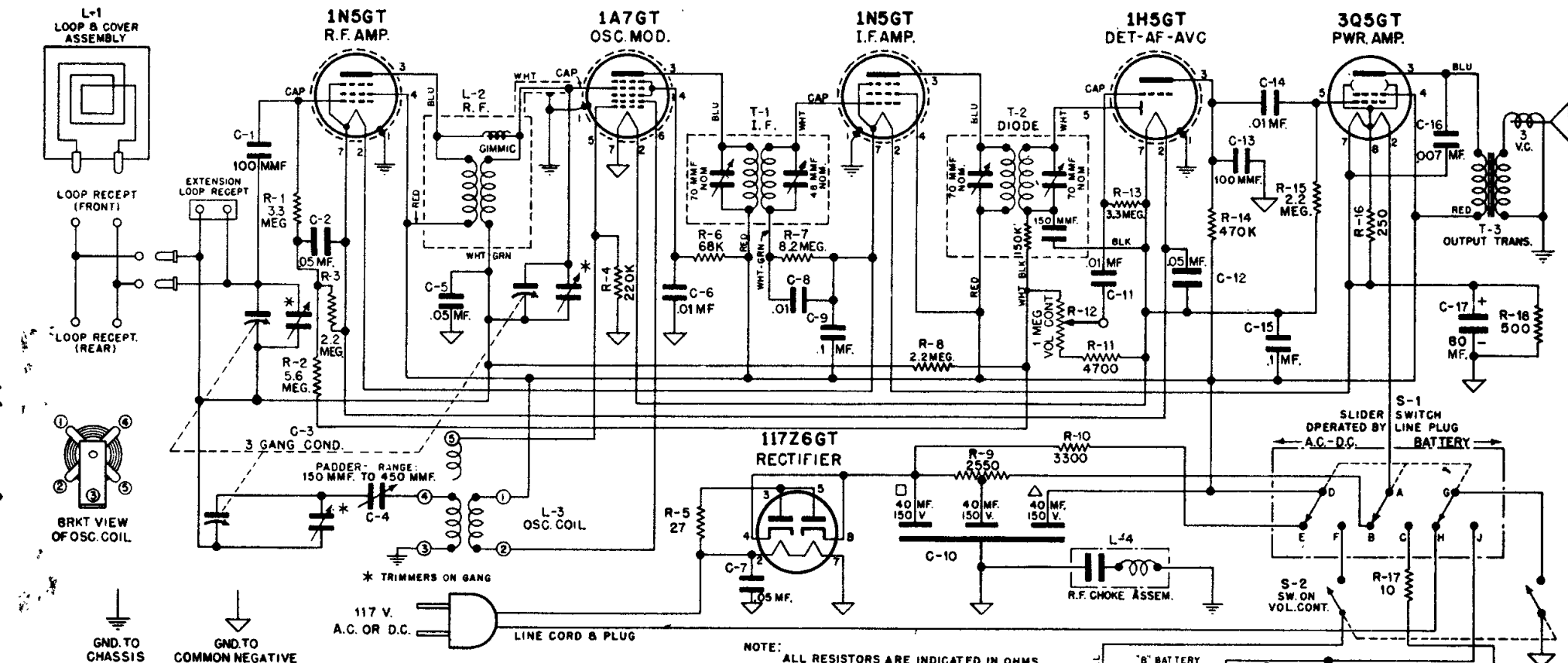


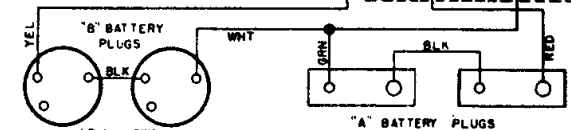
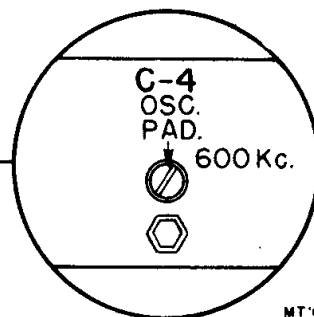
CHASSIS HS-7

Motorola

Models: 65L11 and 65L12



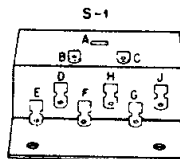
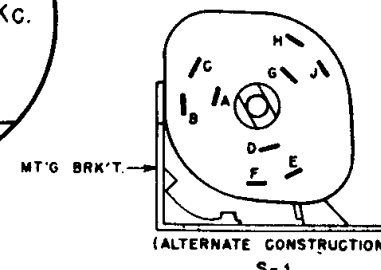
Motorola



"B" BATTERY
45 VOLT BATTERY
(2 REQUIRED)
(EVEREADY NO 482
OR EQUIVALENT)

"A" BATTERY
4 1/2 VOLT BATTERY
(2 REQUIRED)
(EVEREADY NO 746
OR EQUIVALENT)

	CURRENT DRAIN	
	A.C.	BATT.
"A"	49 MA.	49 MA.
"B"	14 MA.	14.5 MA.



I.F. = 455 KC
FREQUENCY RANGE
535 KC TO 1600 KC

Models 65L11 & 65L12, Chassis HS-7