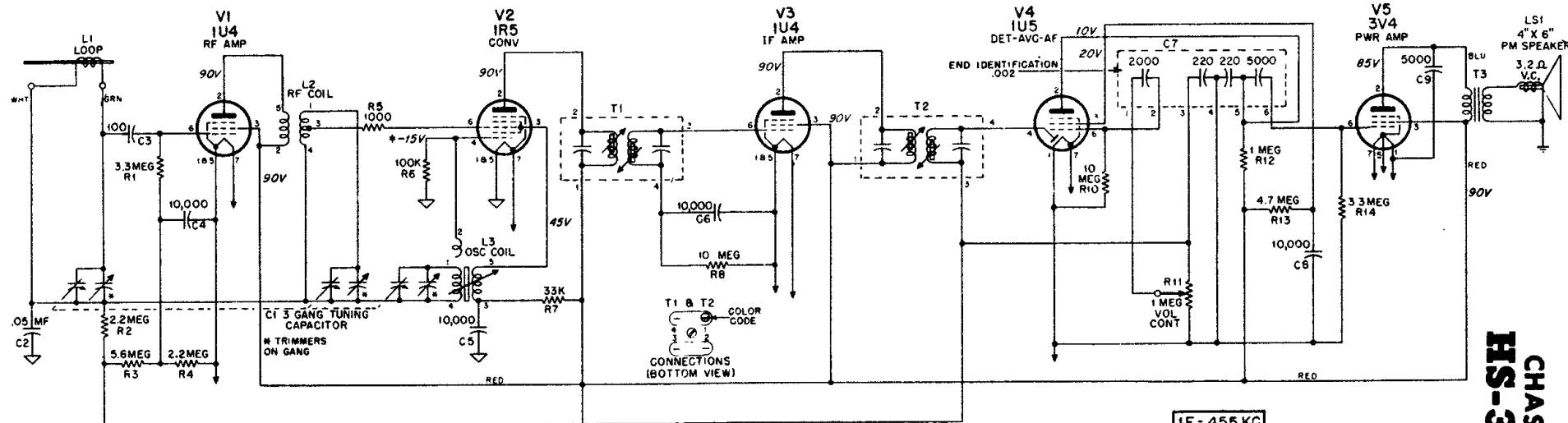
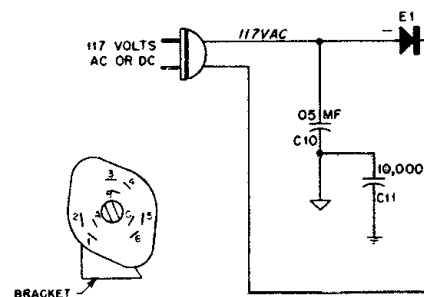
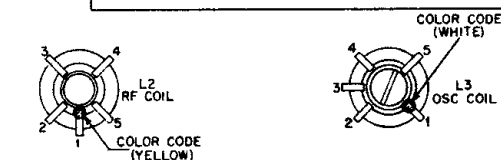


62L1U 62L2U 62L3U

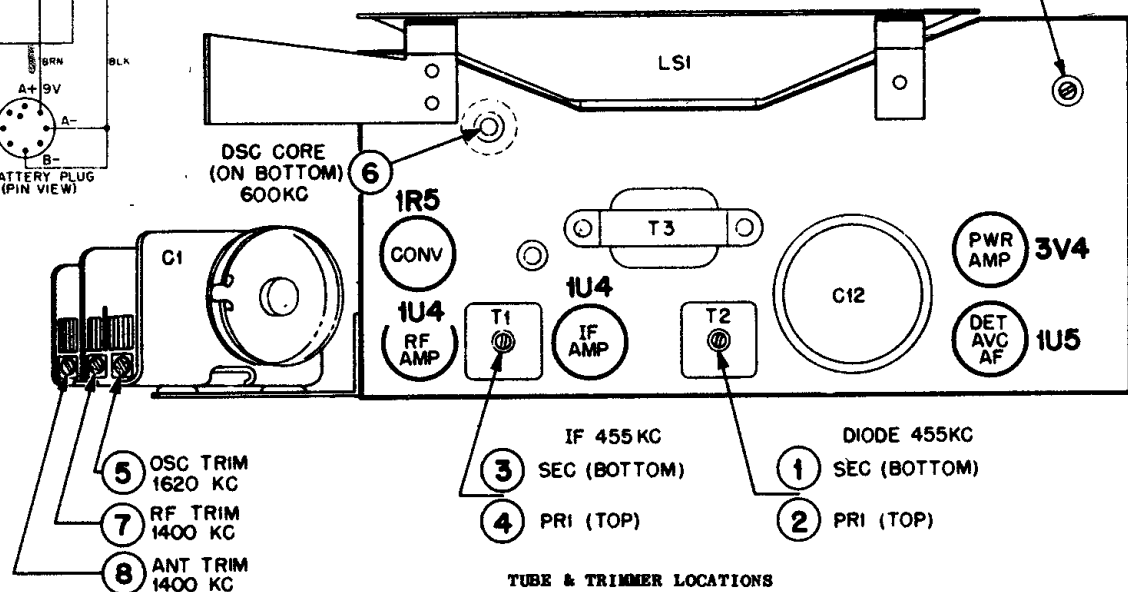
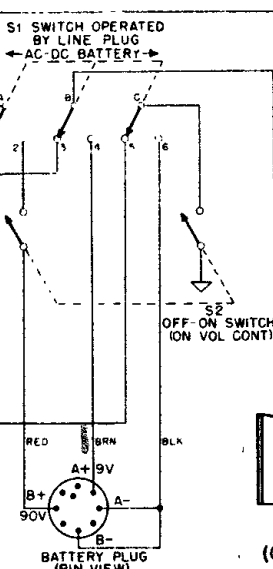
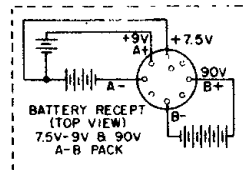
CHASSIS HS-308



IF = 455 KC
FREQ RANGE
535 - 1620 KC



EVEREADY* 756
BURGESS* T6Z60
GENERAL* 362
OR EQUIVALENT



TUBE & TRIMMER LOCATIONS

- NOTE
- 1 VOLTAGE MEASUREMENTS MADE WITH ELECTRONIC TYPE VOLT-METER
 - 2 VOLTAGES TAKEN BETWEEN POINT INDICATED & B-
 - 3 INPUT VOLTAGE 117VAC.
 - 4 VOLTAGE TOLERANCE $\pm 10\%$.
 - 5 NO. SIGNAL INPUT.
 - 6 * MEASUREMENT MADE WITH GANG FULLY OPEN.
 - 7 UPPER FILAMENT VOLTAGE READING OBTAINED ON BATTERY OPERATION AND LOWER ON AC
 - 8 CAPACITORS INDICATED IN MMF UNLESS OTHERWISE SPECIFIED.
 - 9 ALL RESISTORS INDICATED IN OHMS. K=1000 OHMS.
 - \perp - CHASSIS GROUND
 - ∇ - 0-