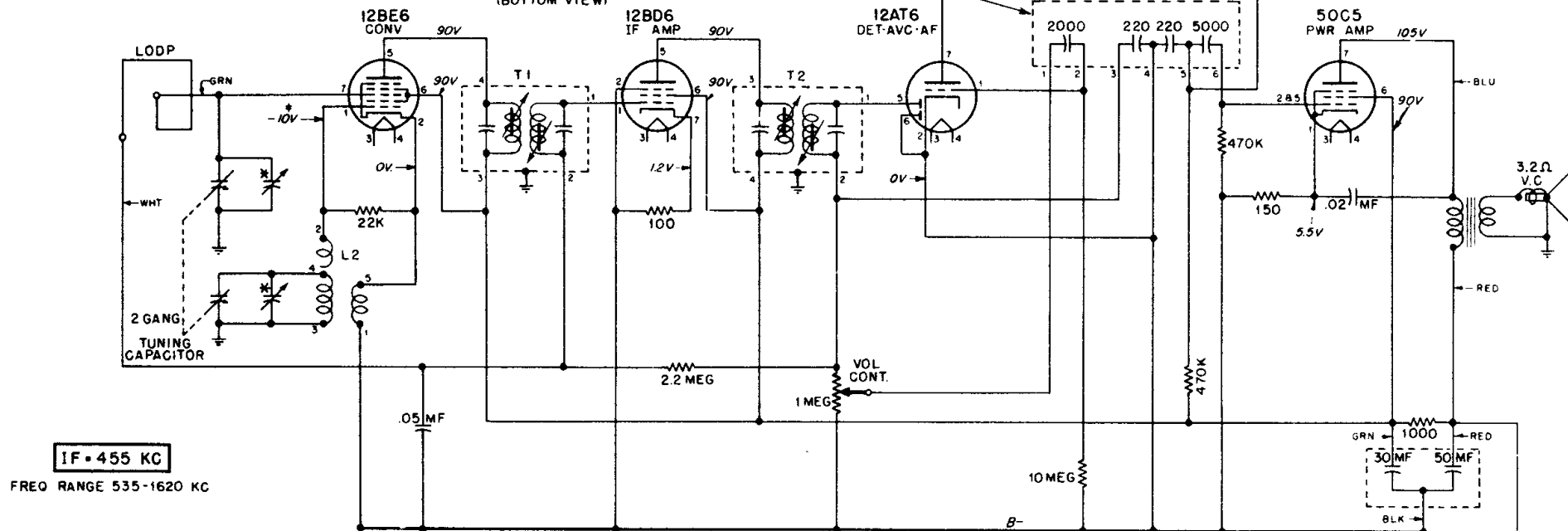
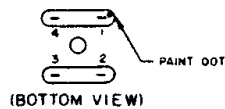


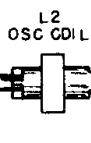
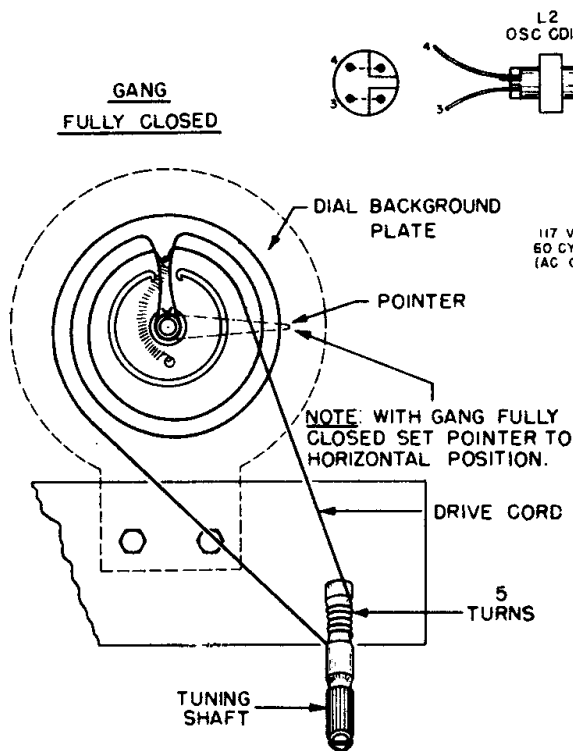
T1 & T2 CONNECTIONS



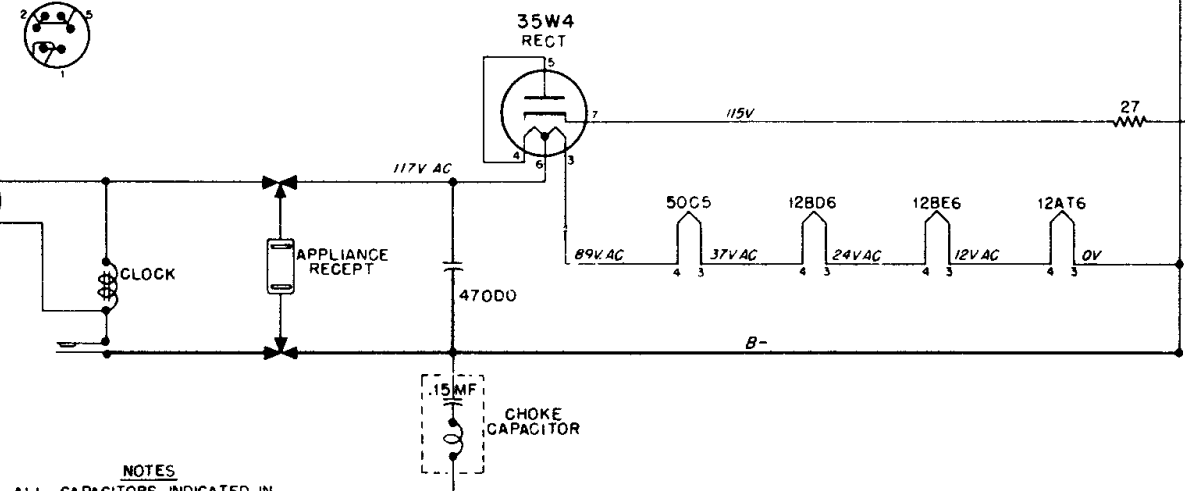
IF = 455 KC

FREQ RANGE 535-1620 KC

GANG FULLY CLOSED



117 VOLTS 60 CYCLES (AC ONLY)



NOTES

ALL CAPACITORS INDICATED IN MMF UNLESS OTHERWISE SPECIFIED.

ALL RESISTORS INDICATED IN OHMS. K = ONE THOUSAND (1000) OHMS

VOLTAGE MEASUREMENTS MADE WITH ELECTRONIC TYPE VOLTMETER

VOLTAGES TAKEN BETWEEN POINT INDICATED AND B-

INPUT VOLTAGE 117V AC

VOLTAGE TOLERANCE  $\pm 10\%$

NO SIGNAL INPUT.

\* TRIMMERS ON GANG

† MEASUREMENT MADE WITH GANG FULLY OPEN.

MODELS

52C6

52C7

52C8

CHASSIS

HS-310