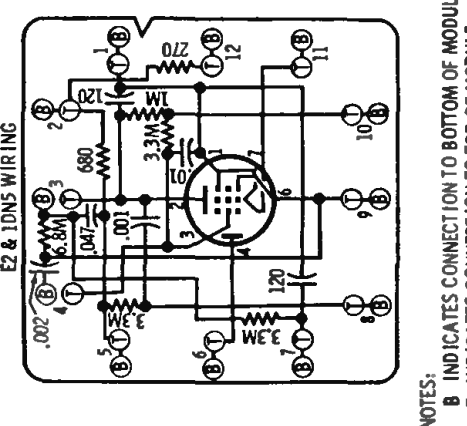
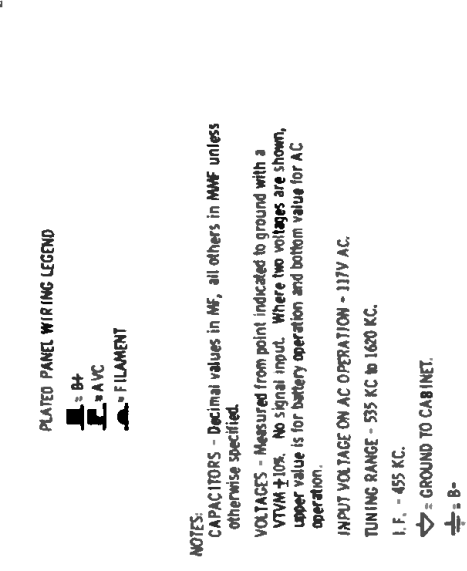
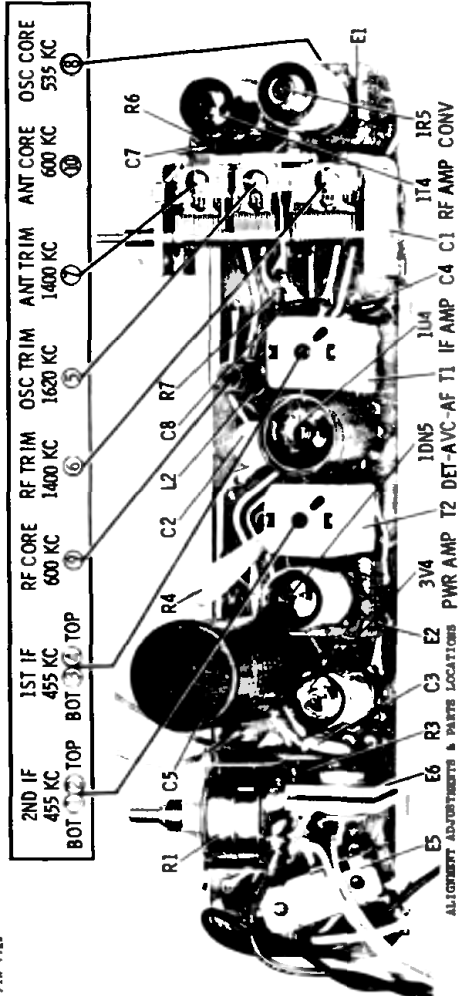
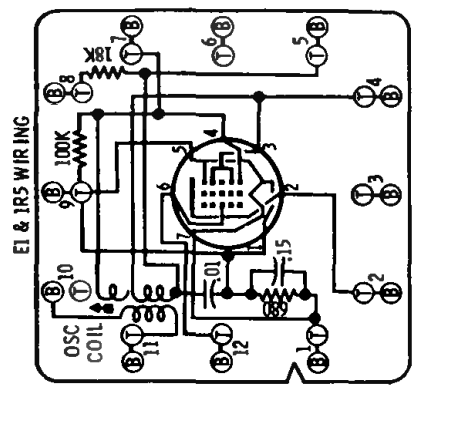
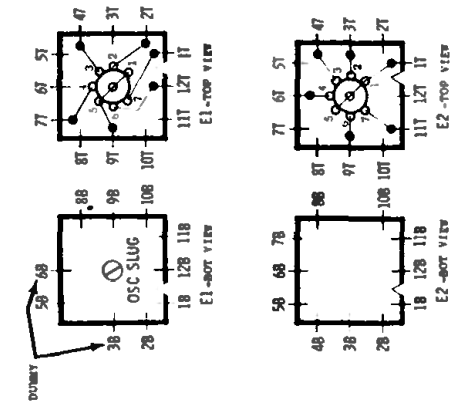
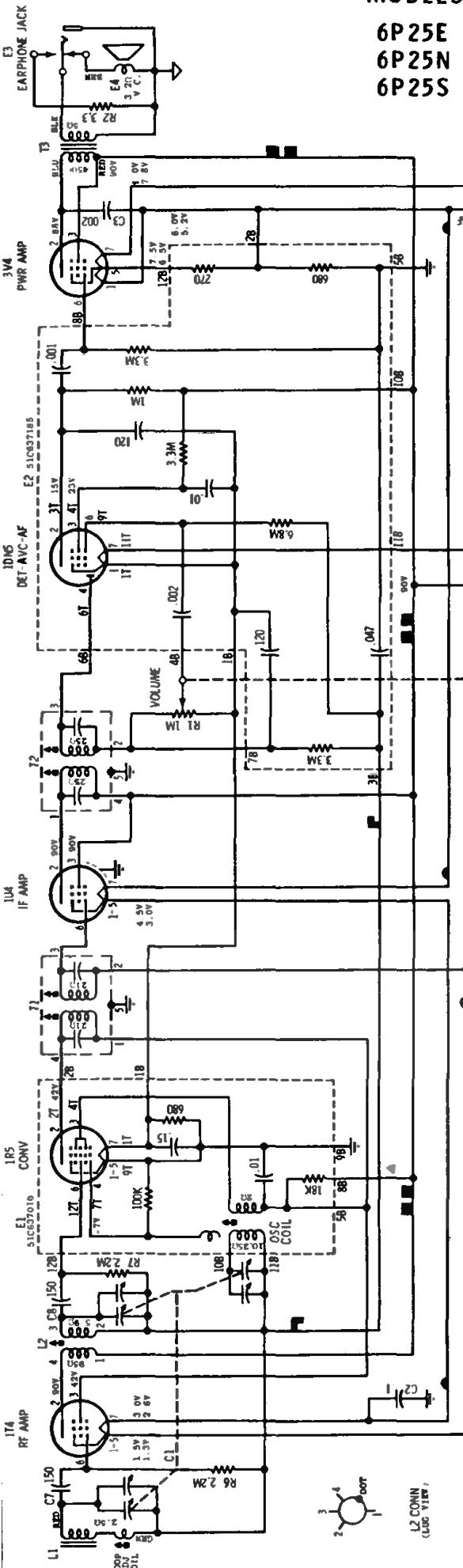


# MOTOROLA

MODELS CHASSIS  
 6P25E HS-637  
 6P25N HS-637  
 6P25S HS-637



NOTES:  
 CAPACITORS - Decimal values in MF, all others in MMF unless otherwise specified.  
 VOLTAGES - Measured from point indicated to ground with a VTVM  $\pm 10\%$ . No signal input. Where two voltages are shown, upper value is for battery operation and bottom value for AC operation.  
 INPUT VOLTAGE ON AC OPERATION - 117V AC.  
 TUNING RANGE - 535 KC to 1620 KC.  
 I.F. - 455 KC.  
 $\nabla$  = GROUND TO CABINET.  
 $\oplus$  = B.

NOTES:  
 B INDICATES CONNECTION TO BOTTOM OF MODULE;  
 T INDICATES CONNECTION TO TOP OF MODULE.