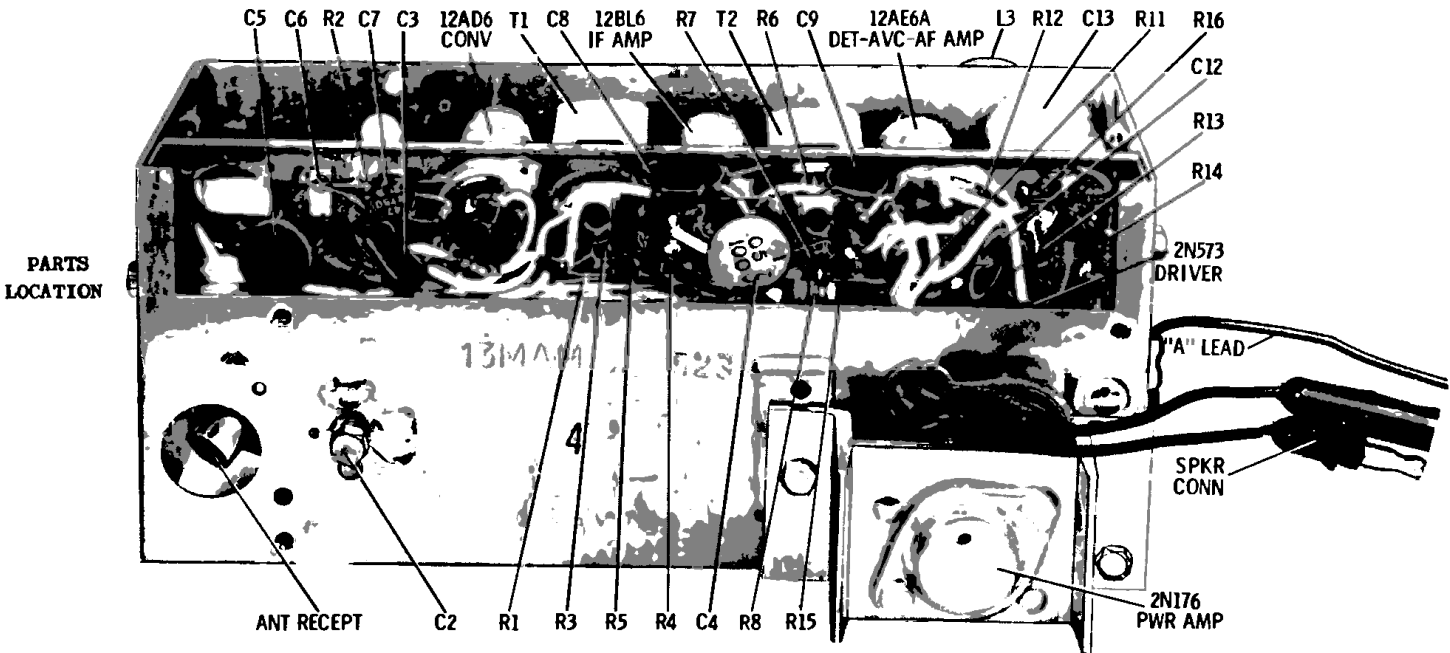
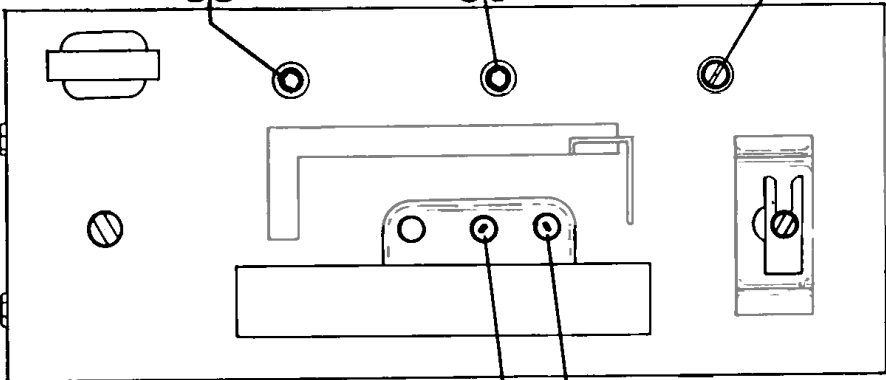
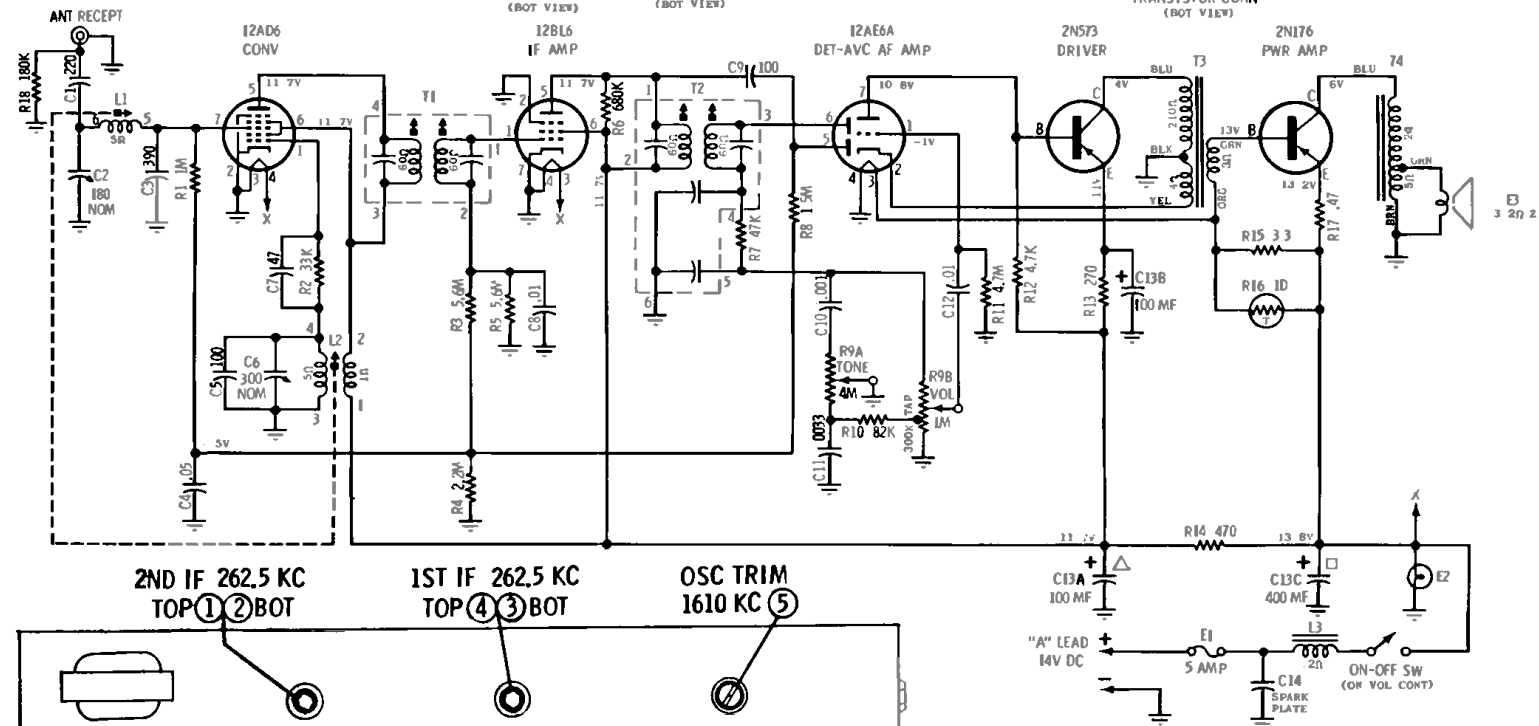


# MOTOROLA

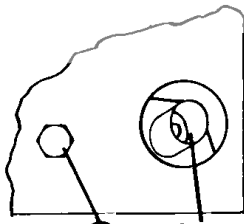
MODEL  
MOTOROLA 13MAM  
AMERICAN MOTORS 8990831



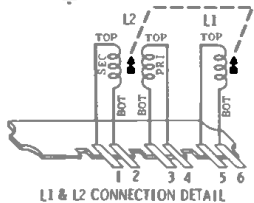
**CAUTION**  
"A" LEAD MUST BE CONNECTED TO POSITIVE (+) SIDE OF POWER SUPPLY. RADIO WILL NOT OPERATE AND DAMAGE TO COMPONENTS WILL RESULT IF CONNECTED OTHERWISE.



FRONT VIEW (WITH DIAL SCALE & BACKGROUND REMOVED)



BACK VIEW



**NOTES:**  
CAPACITORS—Unless otherwise specified, decimal values in MF, all others in MMF.  
VOLTAGES—Measured from point indicated to chassis,  $\pm 10\%$  No signal input.  
INPUT VOLTAGE 14V DC  
TUNING RANGE - 540 KC to 1610 KC  
IF - 262.5 KC