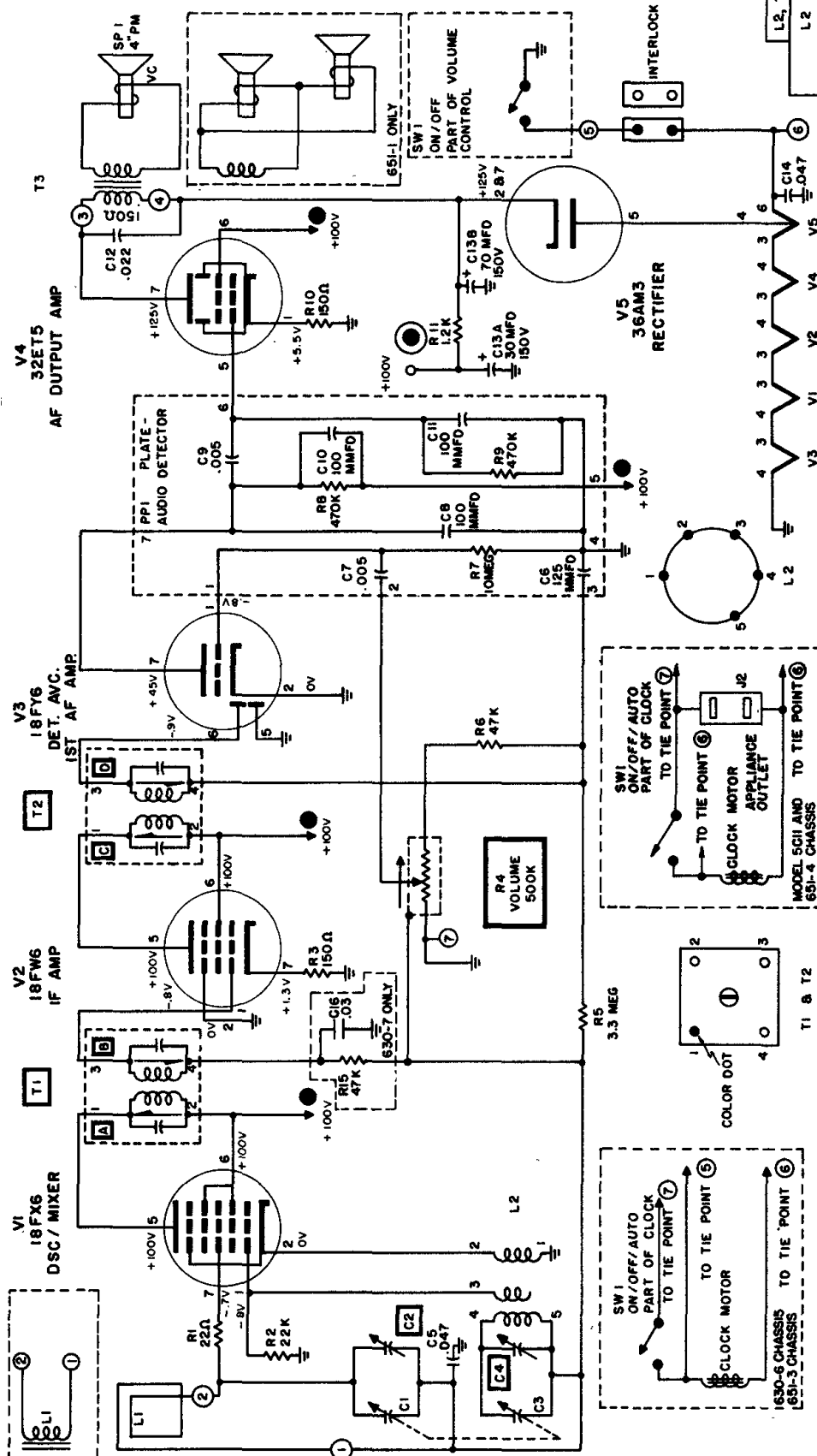


SYLVANIA

CHASSIS 630-5 THRU-8 651-1 THRU-4

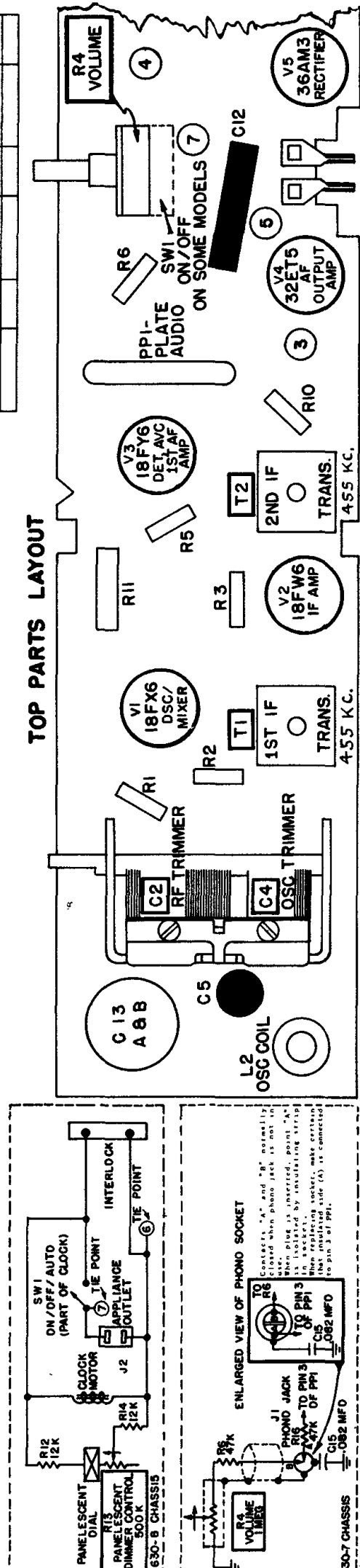
Models 5C10B, P, 5C11B, T, 5C12R, T, W, 5T10B, P, 5T11B, T, 5T12R, T, W, 1100, 1111, 1160, 1212, 1219, 1286, 1300, 1301, 1306, 1309, 1322, 1400, 1512, 1519, 1600, 1701, 1704, 1708, and 1709



L2, T1 & T2 RESISTANCE CHART

L2		T1		T2	
BETWEEN TERMINALS	RES. Ω	BETWEEN TERMINALS	RES. Ω	BETWEEN TERMINALS	RES. Ω
1 & 2	1	1 & 2	15	1 & 2	15
4 & 5	7	3 & 4	15	3 & 4	15

TOP PARTS LAYOUT



SCHEMATIC NOTES
1. VOLTAGES MEASURED TO NEGATIVE "B" USING SYLVANIA "POLYMER". LINE VOLTAGE 117VAC AND SIGNAL
2. COIL AND TRANSFORMER RESISTANCES ARE AVERAGE VALUES AND ARE TAKEN WITH COMPONENT CONNECTED
3. IN CIRCUIT
4. ENCIRCLED NUMBERS CORRESPOND WITH TIE POINTS ON PRINTED CIRCUIT BOARD.
5. INDICATES VOLTAGE TIE POINTS
6. * DESIGNATES NEGATIVE "B"

ENLARGED VIEW OF PHONO SOCKET

