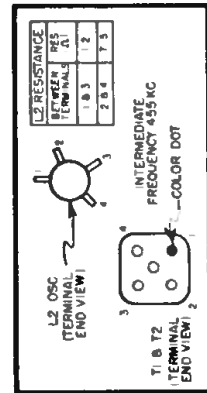
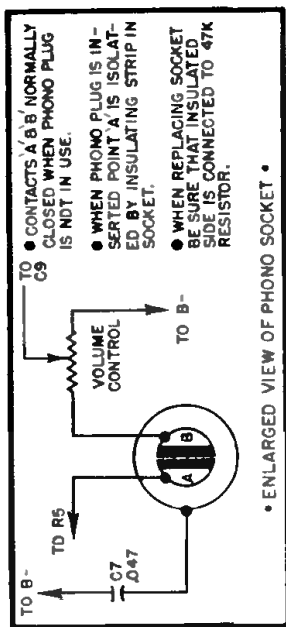
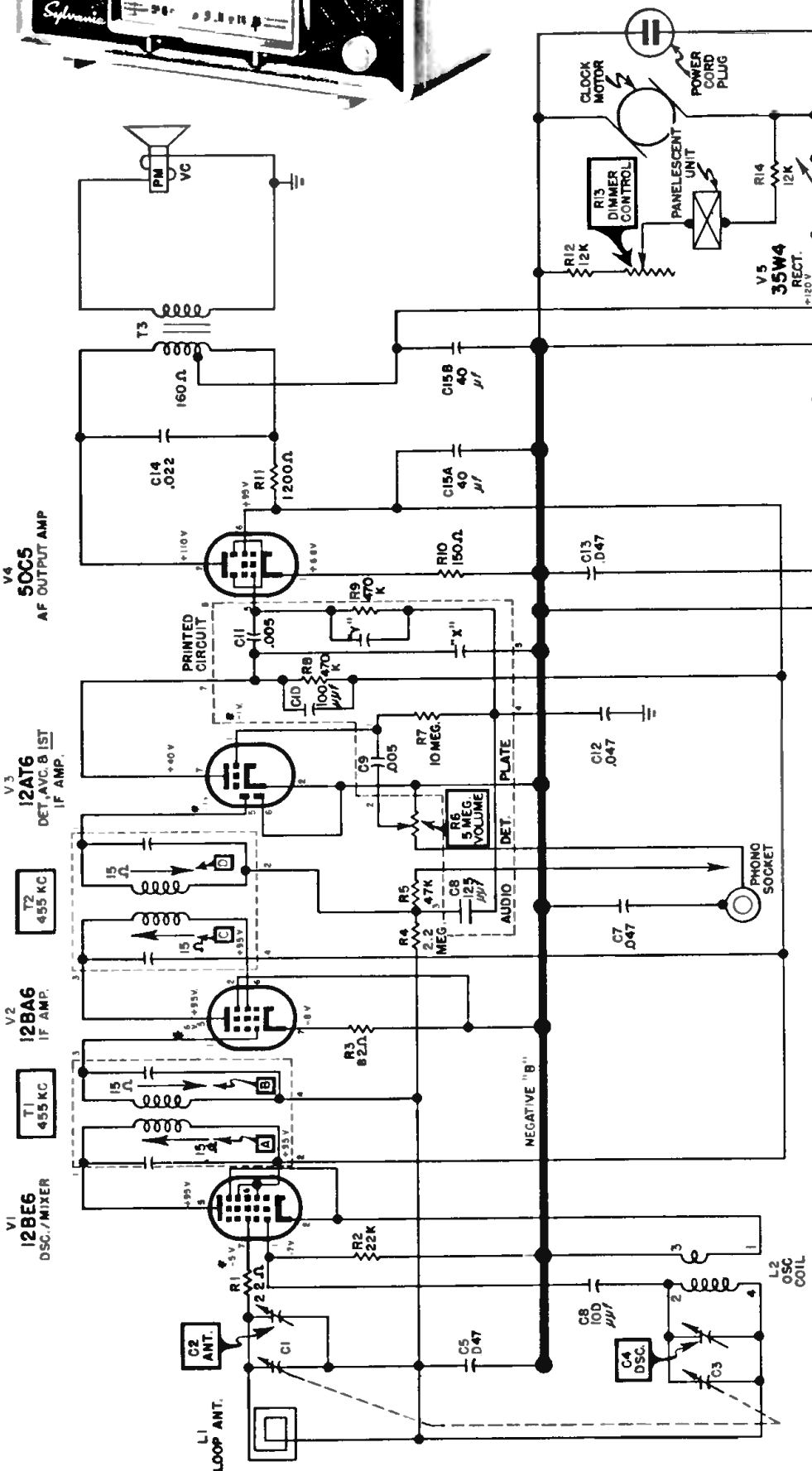


CHASSIS: I-602-9 MODELS: 2302

SCHEMATIC NOTE:	
1	Values are measured to negative terminal of chassis ground.
2	Coil resistances are average values and are taken with component connected in circuit and signal input kept to minimum.
3	Coil resistances are average values and are taken with component connected in circuit and signal input kept to minimum.
4	Values of resistance readings are shown where too small or widely variable.
5	Intermediate frequency 455KC
6	Combined values of X and Y equals 100 Mcf



Disconnect power cord from AC outlet.

Remove clock control, tuning and volume knobs.

Remove (3) chassis bolts underneath cabinet.

Slide chassis, clock and backcover from cabinet.

SCHEMATIC DIAGRAM - SYLVANIA RADIO CHASSIS NO. I-602-9