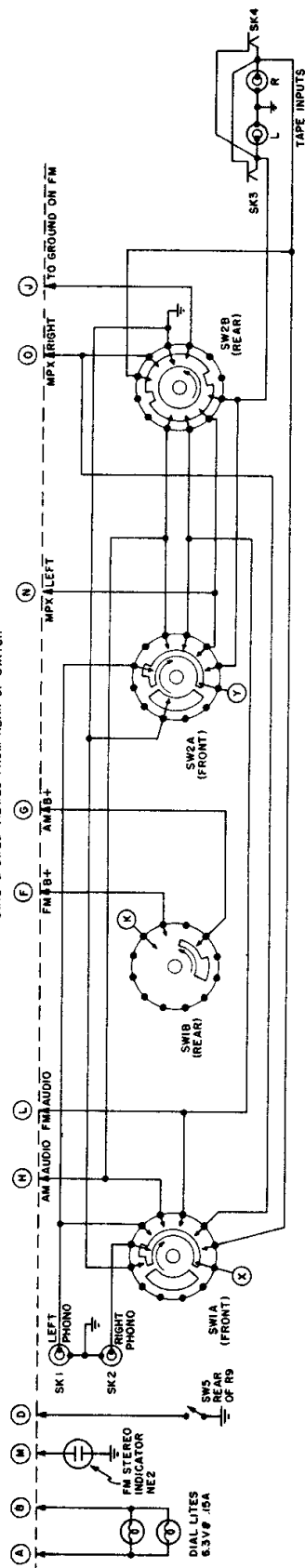


—SCHEMATIC DIAGRAM 370-1(AM/FM TUNER)—

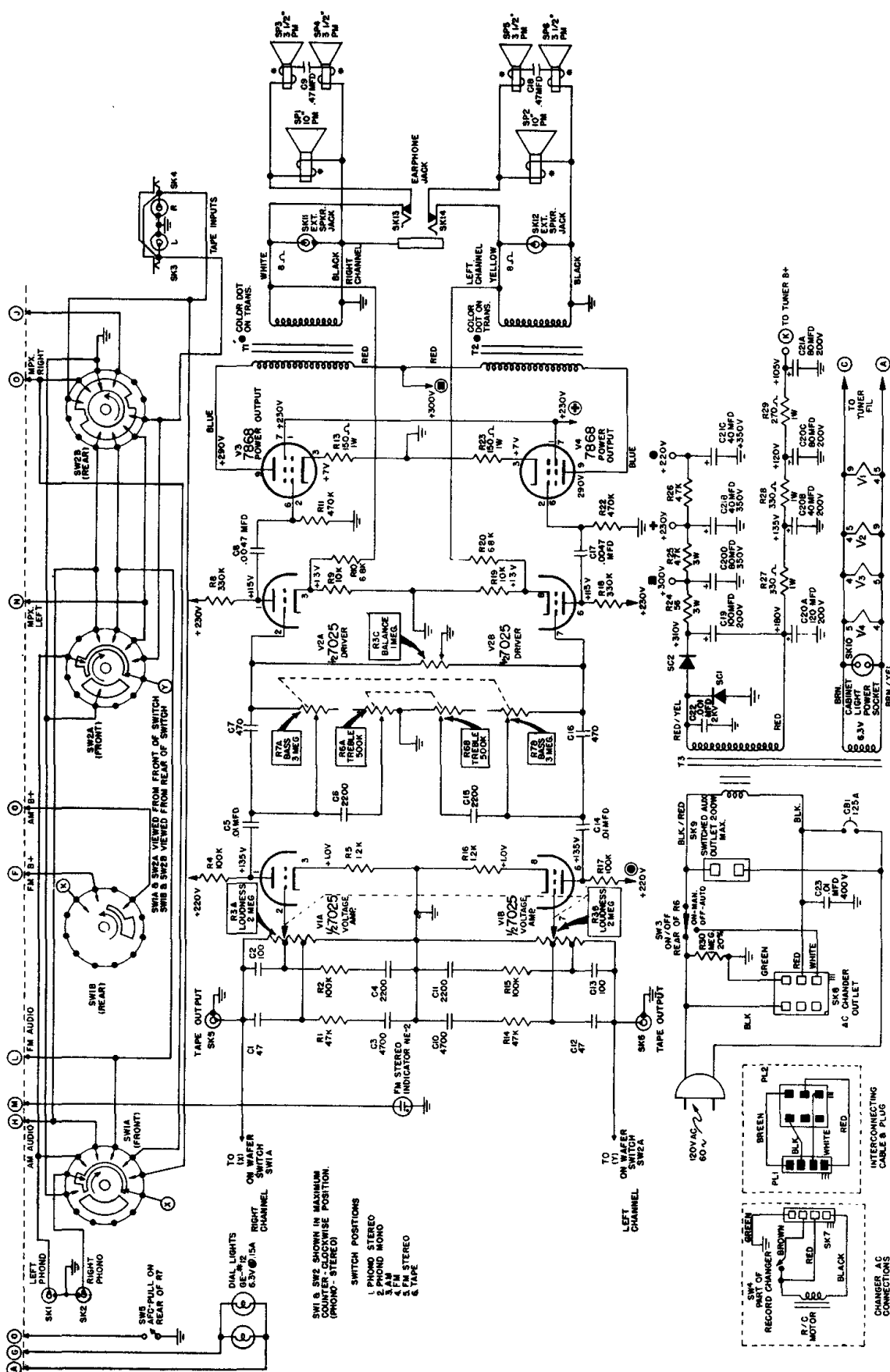
SW1A & SW2A VIEWED FROM FRONT OF SWITCH
SW1B & SW2B VIEWED FROM REAR OF SWITCH




CHASSIS:803-1,-2


MODELS SC541W, SC542CH, GN, M, SC543, SC561M, W

(These models use Tuner 370-1)



SCHEMATIC NOTES

1. VOLTAGES SHOWN ARE AVERAGE READINGS MEASURED TO CHASSIS WITH NO SIGNAL INPUT. VARIATIONS MAY BE NOTED DUE TO NORMAL PRODUCTION TOLERANCES.
2. AC POWER SOURCE 120 VOLT, 60 CYCLE.
3. CAPACITANCE IN MICROMICROFARADS UNLESS OTHERWISE SPECIFIED.
4. A VOLTAGE SOURCE IS INDICATED BY A SYMBOL  ; THE

CORRESPONDING SYMBOL WITH A CIRCLE  INDICATES THE VOLTAGE TIE POINT.

5. $\frac{1}{2}$ DESIGNATES CHASSIS GROUND.
6. * INDICATES COLOR DOT ON SPEAKERS FOR CORRECT PHASING.
7. R3, R6, R7, ARE DUAL GANGED CONTROLS.