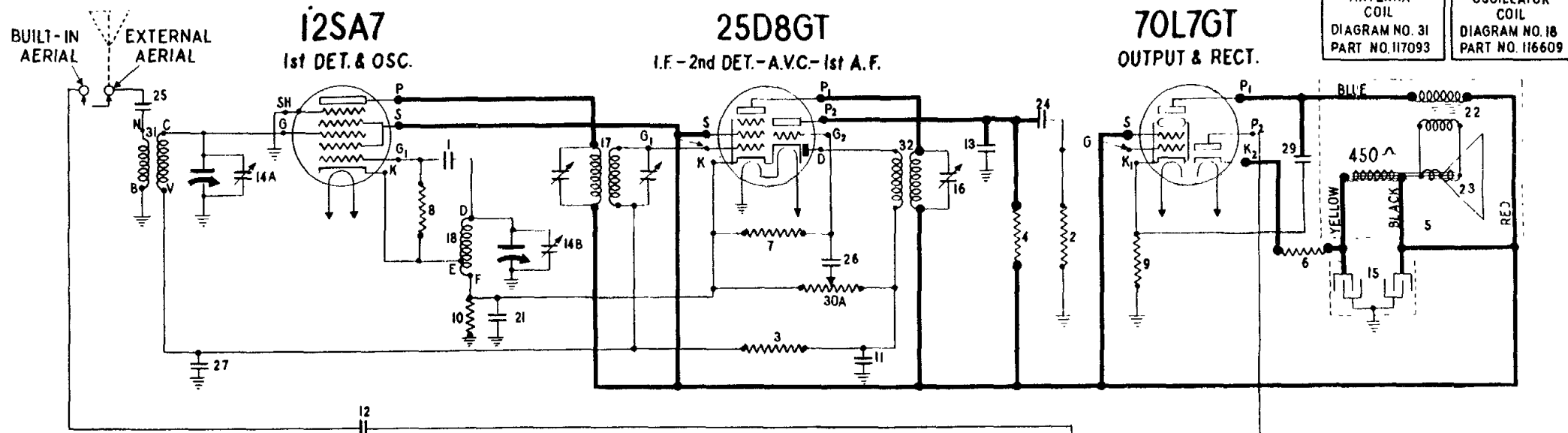
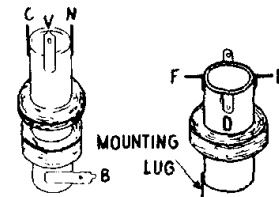


STEWART-WARNER "AIR-PAL" RECEIVER

MODEL A-6S (07-32 CHASSIS)

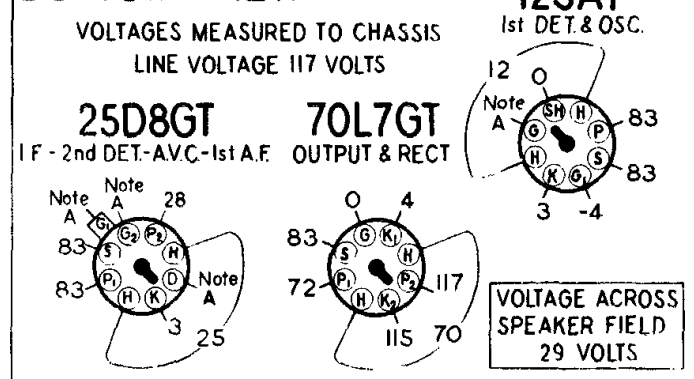
THIS MANUAL APPLIES ONLY TO THE RECEIVER MARKED A-6S.
A SEPARATE MANUAL HAS BEEN ISSUED FOR THE RECEIVER MARKED A-6.



SOCKET VOLTAGES

VOLUME CONTROL SET AT MAXIMUM VOLUME POSITION
ANTENNA GROUNDED DIAL TUNED TO 540 KC.

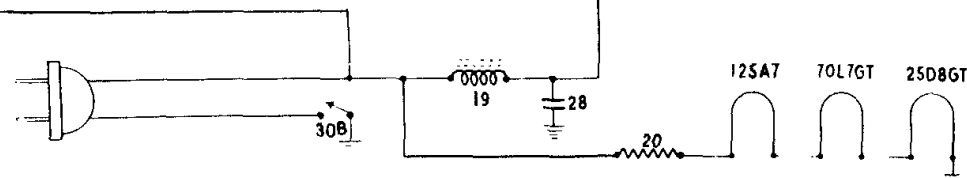
BOTTOM VIEW



REAR OF CHASSIS

NOTE A: Due to the high resistance of resistors No. 3, No. 7, and No. 30A, only a very slight deflection will be obtained on a meter having a resistance of 1000 ohms per volt.

I.F.
455 KC.



- 17 Transformer—1st I.F.
- 18 Coil—oscillator
- 19 Coil—R. F. Choke
- 20 Resistor—65 ohms, 2 watts, Wire Wound
- 21 Condenser—.1 mfd., 600 volt
- 22 Transformer — output for R-115053 speaker
- 23 Cone & Voice coil assembly for R-115053 speaker
- 24 Condenser—.01 mfd., 600 volt
- 25-26 .. Condenser—.004 mfd., 600 volt
- 27 Condenser—.05 mfd., 600 volt
- 28-29 .. Condenser—.02 mfd., 600 volt
- 30A-30B Volume control (500,000 ohms—with switch)
- 31 Coil—antenna
- 32 Transformer—2nd I.F.

- 1 Condenser—mica, 110 mmf.
- 2 Resistor—insulated, 470,000 ohms, 1/4 watt
- 3 Resistor—insulated, 1 megohm, 1/4 watt
- 4 Resistor—insulated, 220,000 ohms, 1/4 watt
- 5 Speaker—dynamic 3"
- 6 Resistor—50 ohm, 1 watt
- 7 Resistor—insulated, 10 megohm, 1/4 watt
- 8 Resistor—insulated, 22,000 ohm, 1/4 watt
- 9 Resistor—insulated, 100 ohm 1/2 watt..
- 10 Resistor—insulated, 100 ohm, 1/4 watt..
- 11-12-13 Condenser—mica, 260 mmf.
- 14A-14B Condenser—2 gang tuning
- 15 ... Condenser—electrolytic, Dual 20 mfd. 150 volt
- 16 ... Condenser—trimmer for 2nd I.F.