

WALGREEN CO.

MODEL Lovlitone
MODEL P5.XP5

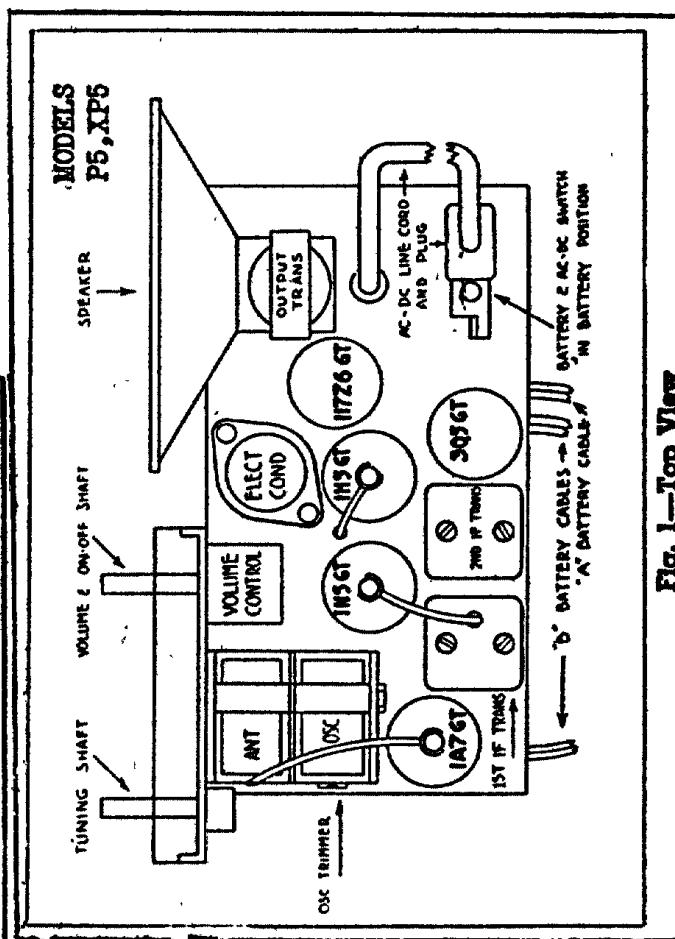
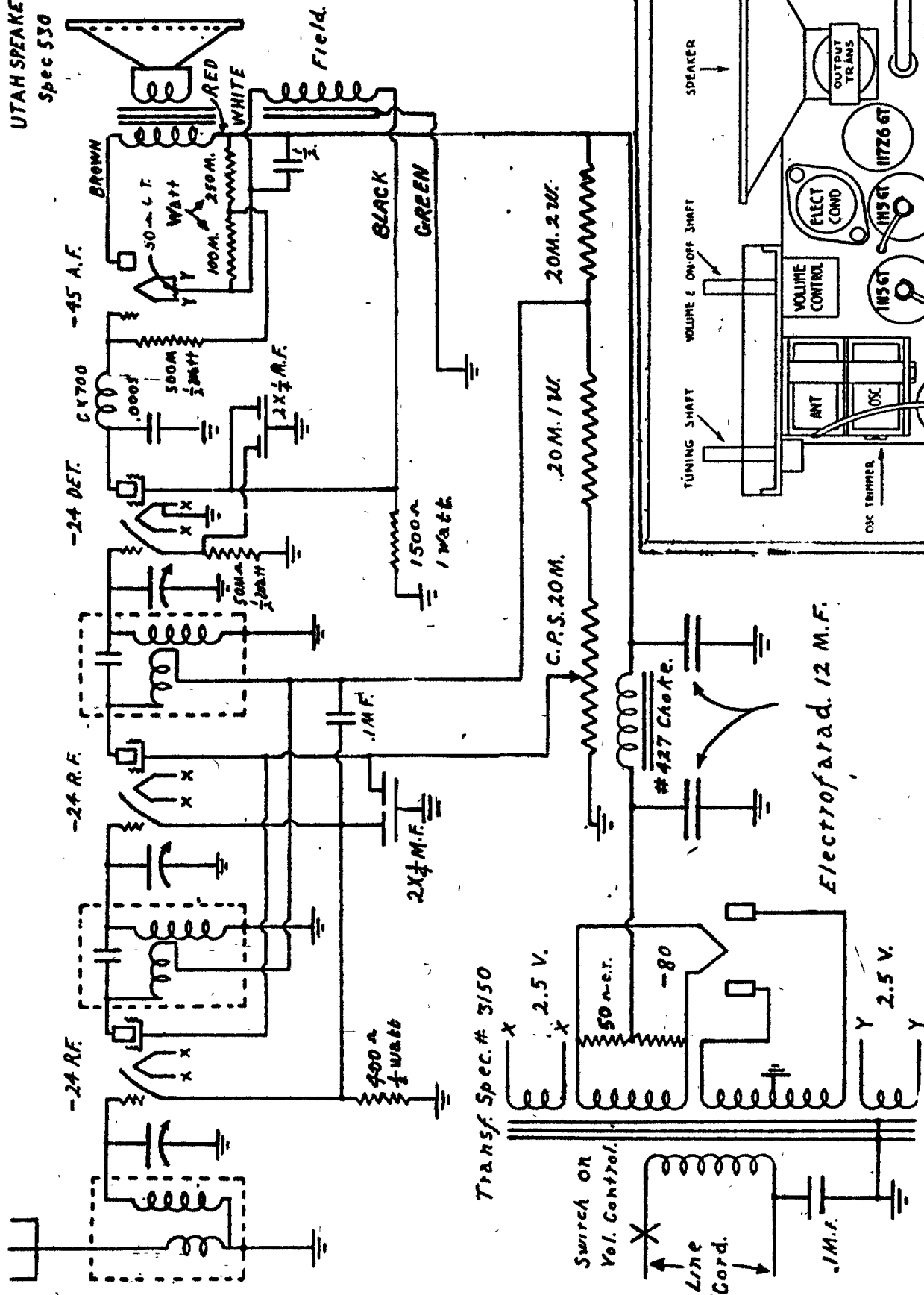
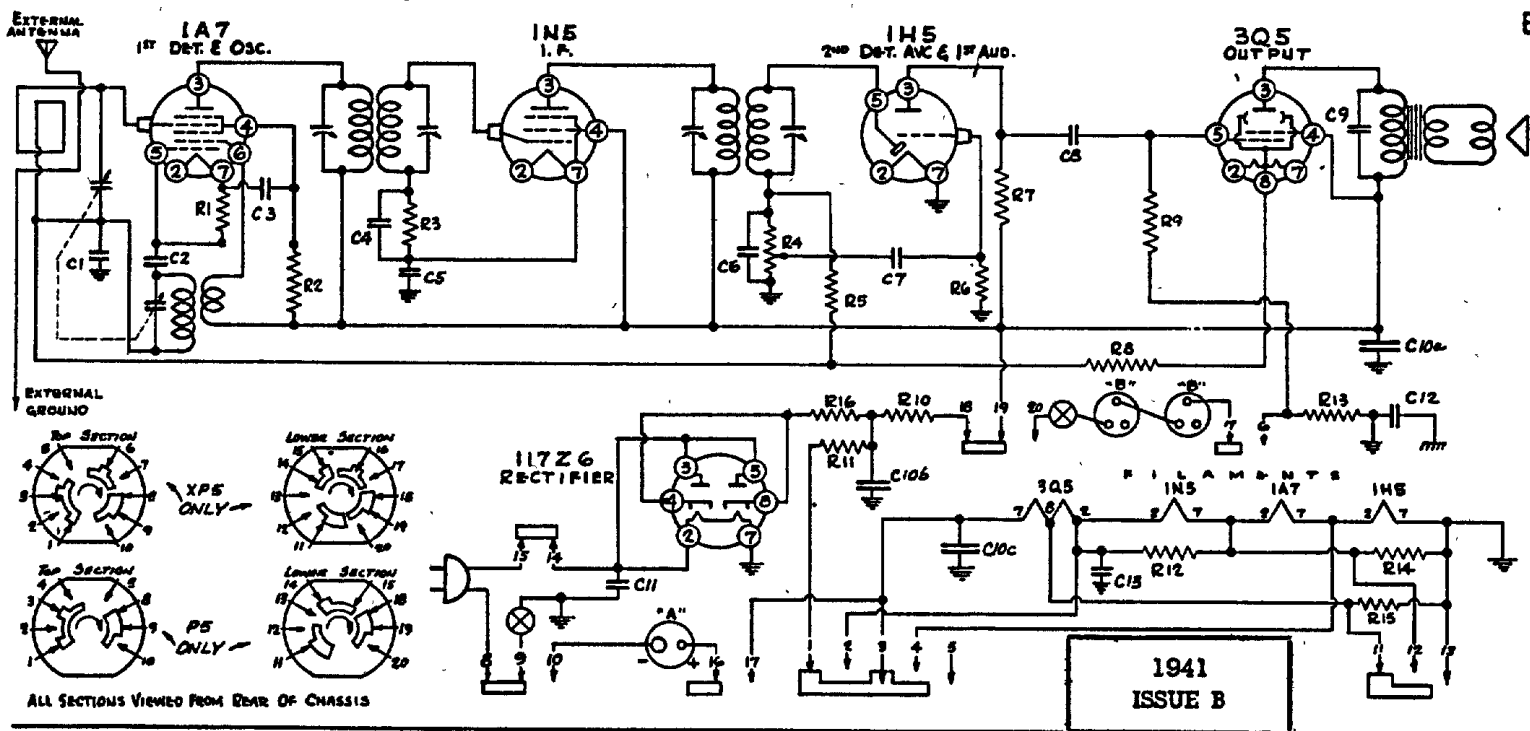


Fig. 1—Top View

MODEL LOVLITONE



RESISTORS

No.	Ohms	Watts
R1	200,000	1/2
R2	50,000	1/2
R3	5,000,000	1/2
R4	1,000,000	1/2
R5	3,000,000	1/4
R6	15,000,000	1/2
R7	1,000,000	1/2
R8	10,000,000	1/4

In Model P5 only, switch points 6, 7, 16 and 17 are not used.
Switch point 5 is not used in either model.

No.	Ohms	Watts
R9	2,000,000	1/2
R10	3,500—10%	1/2
R11	2,600—10%	5
R12	300—10%	1/2
R13	440—10%	1/2
R14	300—10%	1/2
R15	3,000—10%	1/2
R16	30	1/2

CONDENSERS

No.	Capacity (Mfd.)	Volts
C1	.05	200
C2	.00005	Mica
C3	.01	400
C4	.001	Mica
C5	.1	200
C6	.00025	Mica
C7	.001	200
C8	.001	400
C9	.002	600
C10a	50. Elect.	150
C10b	30. Elect.	150
C10c	100. Elect.	25
C11	.05	400
C12	.05	400
C13	100. Elect.	10

I.F. Sig.Gen. at 455 Kc. thru .05 cond. Align I.F. trim. to peak on output meter.

B.C. Sig.Gen. at 1600Kc. Set gang. cond. to min., adj. osc. trim. to receive signal. When using external ant. conn., max. sensitivity will be found at H.F. end.

FIRST I.F. TRANSFORMER (Part no. P4859)

Pri.—Red white, B+; blue white, plate—Res., 7.5ohms. Sec. white, grid; black white, AVC—Res., 17.3ohms.

SEC. I.F. Transformer

Pri.—Blue White, plate; red white B+—Res., 17.8 ohms Sec.—white, grid; black white, AVC—Res., 13.1 ohms

SPEAKER(P4829)5"PM Type D.C. voice coil res.3.2 ohms. Voice coil impd. at 400 cycles..3.5 ohms.

Oscillator Coil (Part No. P5020)

Looking at the connection end in a clockwise direction starting at the chassis the terminals are No. 1, grid; No. 2, plate; No. 3, B+; No. 4, ground.

Primary—No. 2 and No. 3—Resistance.....2.2 ohms
Secondary—No. 4 and No. 1—Resistance.....4.9 ohms

SERVICE INFORMATION

Voltages—Line 117.5 Volts AC—Power Consumption 25 Watts.

Volume control maximum and no signal tuned in. Meter 1000 ohms per volt, 150 volt scale.

Plate (3) of 1A7 tube to common ground.....	100	volts
Screen (4) of 1A7 tube to common ground.....	62	volts
Anode grid (6) of 1A7 tube to common ground.....	100	volts
Filament (2) to (7) of 1A7 tube	1.35	volts
Plate (3) of 1N5 tube to common ground.....	100	volts
Screen (4) of 1N5 tube to common ground.....	102	volts
Filament (2) to (7) of 1N5 tube.....	1.3	volts
Plate (3) of 1H5 tube to common ground.....	38	volts
Filament (2) to (7) of 1H5 tube.....	1.35	volts
Plate (3) of 3Q5 tube to common ground.....	98	volts
Screen (4) of 3Q5 to common ground.....	102	volts
Filament (7) to (8) of 3Q5 tube.....	1.3	volts
Filament (2) to (8) of 3Q5 tube.....	1.35	volts
Plate (3) or (5) of 117Z6 tube to common ground.....	117.5v. (AC)	
Cathode (4) or (8) of 117Z6 tube to common ground.....	128	volts
Filament (2) to (7) of 117Z6 tube.....	117.5v. (AC)	