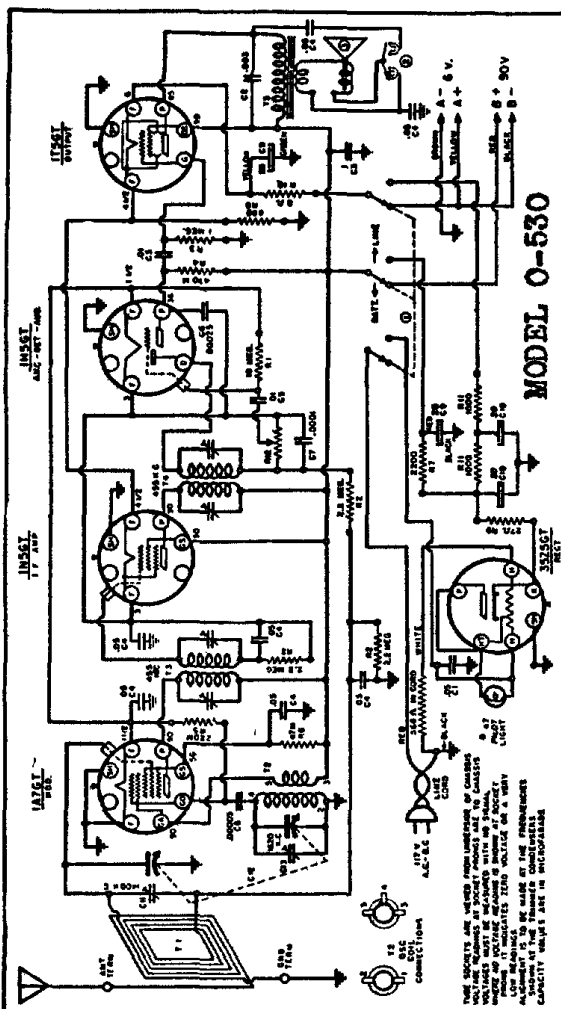
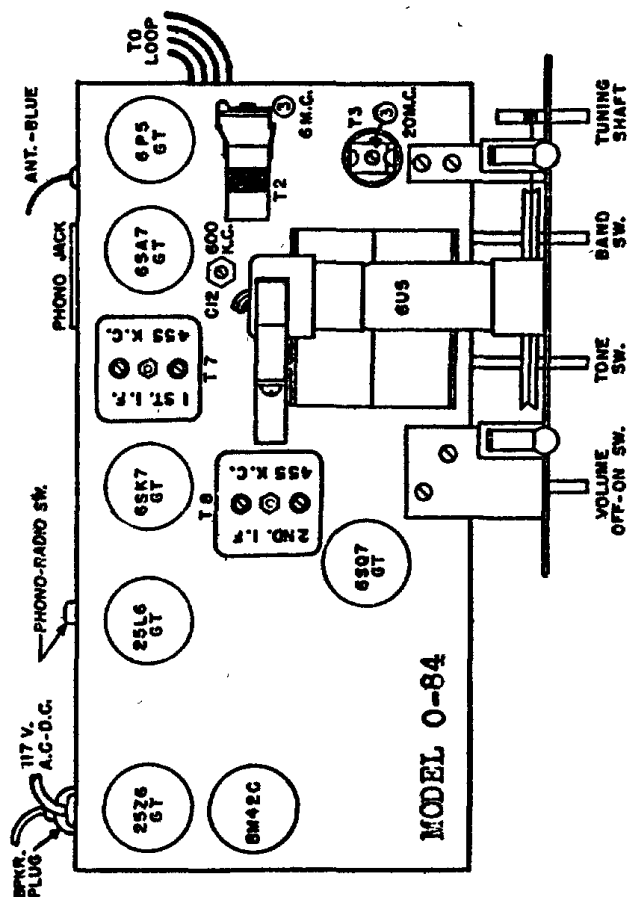


**MODEL 0-530**



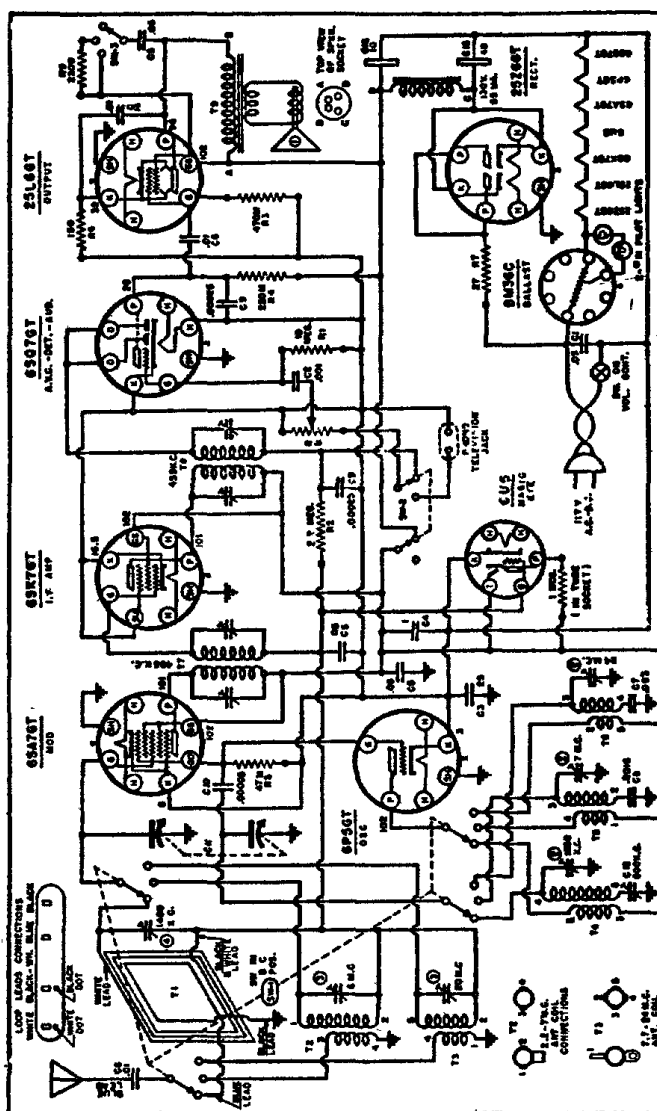
CODE	PORT NO.	DESCRIPTION	DATE	PLANT NO.	DESCRIPTION
CU	14	OS WFL	8/2/58	100	100 WFL
CU	15	OS WFL	8/2/58	100	100 WFL
CU	16	OS WFL	8/2/58	100	100 WFL
CU	17	OS WFL	8/2/58	100	100 WFL
CU	18	OS WFL	8/2/58	100	100 WFL
CU	19	OS WFL	8/2/58	100	100 WFL
CU	20	OS WFL	8/2/58	100	100 WFL
CU	21	OS WFL	8/2/58	100	100 WFL
CU	22	OS WFL	8/2/58	100	100 WFL
CU	23	OS WFL	8/2/58	100	100 WFL
CU	24	OS WFL	8/2/58	100	100 WFL
CU	25	OS WFL	8/2/58	100	100 WFL
CU	26	OS WFL	8/2/58	100	100 WFL
CU	27	OS WFL	8/2/58	100	100 WFL
CU	28	OS WFL	8/2/58	100	100 WFL
CU	29	OS WFL	8/2/58	100	100 WFL
CU	30	OS WFL	8/2/58	100	100 WFL
CU	31	OS WFL	8/2/58	100	100 WFL
CU	32	OS WFL	8/2/58	100	100 WFL
CU	33	OS WFL	8/2/58	100	100 WFL
CU	34	OS WFL	8/2/58	100	100 WFL
CU	35	OS WFL	8/2/58	100	100 WFL
CU	36	OS WFL	8/2/58	100	100 WFL
CU	37	OS WFL	8/2/58	100	100 WFL
CU	38	OS WFL	8/2/58	100	100 WFL
CU	39	OS WFL	8/2/58	100	100 WFL
CU	40	OS WFL	8/2/58	100	100 WFL
CU	41	OS WFL	8/2/58	100	100 WFL
CU	42	OS WFL	8/2/58	100	100 WFL
CU	43	OS WFL	8/2/58	100	100 WFL
CU	44	OS WFL	8/2/58	100	100 WFL
CU	45	OS WFL	8/2/58	100	100 WFL
CU	46	OS WFL	8/2/58	100	100 WFL
CU	47	OS WFL	8/2/58	100	100 WFL
CU	48	OS WFL	8/2/58	100	100 WFL
CU	49	OS WFL	8/2/58	100	100 WFL
CU	50	OS WFL	8/2/58	100	100 WFL
CU	51	OS WFL	8/2/58	100	100 WFL
CU	52	OS WFL	8/2/58	100	100 WFL
CU	53	OS WFL	8/2/58	100	100 WFL
CU	54	OS WFL	8/2/58	100	100 WFL
CU	55	OS WFL	8/2/58	100	100 WFL
CU	56	OS WFL	8/2/58	100	100 WFL
CU	57	OS WFL	8/2/58	100	100 WFL
CU	58	OS WFL	8/2/58	100	100 WFL
CU	59	OS WFL	8/2/58	100	100 WFL
CU	60	OS WFL	8/2/58	100	100 WFL
CU	61	OS WFL	8/2/58	100	100 WFL
CU	62	OS WFL	8/2/58	100	100 WFL
CU	63	OS WFL	8/2/58	100	100 WFL
CU	64	OS WFL	8/2/58	100	100 WFL
CU	65	OS WFL	8/2/58	100	100 WFL
CU	66	OS WFL	8/2/58	100	100 WFL
CU	67	OS WFL	8/2/58	100	100 WFL
CU	68	OS WFL	8/2/58	100	100 WFL
CU	69	OS WFL	8/2/58	100	100 WFL
CU	70	OS WFL	8/2/58	100	100 WFL
CU	71	OS WFL	8/2/58	100	100 WFL
CU	72	OS WFL	8/2/58	100	100 WFL
CU	73	OS WFL	8/2/58	100	100 WFL
CU	74	OS WFL	8/2/58	100	100 WFL
CU	75	OS WFL	8/2/58	100	100 WFL
CU	76	OS WFL	8/2/58	100	100 WFL
CU	77	OS WFL	8/2/58	100	100 WFL
CU	78	OS WFL	8/2/58	100	100 WFL
CU	79	OS WFL	8/2/58	100	100 WFL
CU	80	OS WFL	8/2/58	100	100 WFL
CU	81	OS WFL	8/2/58	100	100 WFL
CU	82	OS WFL	8/2/58	100	100 WFL
CU	83	OS WFL	8/2/58	100	100 WFL
CU	84	OS WFL	8/2/58	100	100 WFL
CU	85	OS WFL	8/2/58	100	100 WFL
CU	86	OS WFL	8/2/58	100	100 WFL
CU	87	OS WFL	8/2/58	100	100 WFL
CU	88	OS WFL	8/2/58	100	100 WFL
CU	89	OS WFL	8/2/58	100	100 WFL
CU	90	OS WFL	8/2/58	100	100 WFL
CU	91	OS WFL	8/2/58	100	100 WFL
CU	92	OS WFL	8/2/58	100	100 WFL
CU	93	OS WFL	8/2/58	100	100 WFL
CU	94	OS WFL	8/2/58	100	100 WFL
CU	95	OS WFL	8/2/58	100	100 WFL
CU	96	OS WFL	8/2/58	100	100 WFL
CU	97	OS WFL	8/2/58	100	100 WFL
CU	98	OS WFL	8/2/58	100	100 WFL
CU	99	OS WFL	8/2/58	100	100 WFL
CU	100	OS WFL	8/2/58	100	100 WFL
CU	101	OS WFL	8/2/58	100	100 WFL
CU	102	OS WFL	8/2/58	100	100 WFL
CU	103	OS WFL	8/2/58	100	100 WFL
CU	104	OS WFL	8/2/58	100	100 WFL
CU	105	OS WFL	8/2/58	100	100 WFL
CU	106	OS WFL	8/2/58	100	100 WFL
CU	107	OS WFL	8/2/58	100	100 WFL
CU	108	OS WFL	8/2/58	100	100 WFL
CU	109	OS WFL	8/2/58	100	100 WFL
CU	110	OS WFL	8/2/58	100	100 WFL
CU	111	OS WFL	8/2/58	100	100 WFL
CU	112	OS WFL	8/2/58	100	100 WFL
CU	113	OS WFL	8/2/58	100	100 WFL
CU	114	OS WFL	8/2/58	100	100 WFL
CU	115	OS WFL	8/2/58	100	100 WFL
CU	116	OS WFL	8/2/58	100	100 WFL
CU	117	OS WFL	8/2/58	100	100 WFL
CU	118	OS WFL	8/2/58	100	100 WFL
CU	119	OS WFL	8/2/58	100	100 WFL
CU	120	OS WFL	8/2/58	100	100 WFL
CU	121	OS WFL	8/2/58	100	100 WFL
CU	122	OS WFL	8/2/58	100	100 WFL
CU	123	OS WFL	8/2/58	100	100 WFL
CU	124	OS WFL	8/2/58	100	100 WFL
CU	125	OS WFL	8/2/58	100	100 WFL
CU	126	OS WFL	8/2/58	100	100 WFL
CU	127	OS WFL	8/2/58	100	100 WFL
CU	128	OS WFL	8/2/58	100	100 WFL
CU	129	OS WFL	8/2/58	100	100 WFL
CU	130	OS WFL	8/2/58	100	100 WFL
CU	131	OS WFL	8/2/58	100	100 WFL
CU	132	OS WFL	8/2/58	100	100 WFL
CU	133	OS WFL	8/2/58	100	100 WFL
CU	134	OS WFL	8/2/58	100	100 WFL
CU	135	OS WFL	8/2/58	100	100 WFL
CU	136	OS WFL	8/2/58	100	100 WFL
CU	137	OS WFL	8/2/58	100	100 WFL
CU	138	OS WFL	8/2/58	100	100 WFL
CU	139	OS WFL	8/2/58	100	100 WFL
CU	140	OS WFL	8/2/58	100	100 WFL
CU	141	OS WFL	8/2/58	100	100 WFL
CU	142	OS WFL	8/2/58	100	100 WFL
CU	143	OS WFL	8/2/58	100	100 WFL
CU	144	OS WFL	8/2/58	100	100 WFL
CU	145	OS WFL	8/2/58	100	100 WFL
CU	146	OS WFL	8/2/58	100	100 WFL
CU	147	OS WFL	8/2/58	100	100 WFL
CU	148	OS WFL	8/2/58	100	100 WFL
CU	149	OS WFL	8/2/58	100	100 WFL
CU	150	OS WFL	8/2/58	100	100 WFL
CU	151	OS WFL	8/2/58	100	100 WFL
CU	152	OS WFL	8/2/58	100	100 WFL
CU	153	OS WFL	8/2/58	100	100 WFL
CU	154	OS WFL	8/2/58	100	100 WFL
CU	155	OS WFL	8/2/58	100	100 WFL
CU	156	OS WFL	8/2/58	100	100 WFL
CU	157	OS WFL	8/2/58	100	100 WFL
CU	158	OS WFL	8/2/58	100	100 WFL
CU	159	OS WFL	8/2/58	100	100 WFL
CU	160	OS WFL	8/2/58	100	100 WFL
CU	161	OS WFL	8/2/58	100	100 WFL
CU	162	OS WFL	8/2/58	100	100 WFL
CU	163	OS WFL	8/2/58	100	100 WFL
CU	164	OS WFL	8/2/58	100	100 WFL
CU	165	OS WFL	8/2/58	100	100 WFL
CU	166	OS WFL	8/2/58	100	100 WFL
CU	167	OS WFL	8/2/58	100	100 WFL
CU	168	OS WFL	8/2/58	100	100 WFL
CU	169	OS WFL	8/2/58	100	100 WFL
CU	170	OS WFL	8/2/58	100	100 WFL
CU	171	OS WFL	8/2/58	100	100 WFL
CU	172	OS WFL	8/2/58	100	100 WFL
CU	173	OS WFL	8/2/58	100	100 WFL
CU	174	OS WFL	8/2/58	100	100 WFL
CU	175	OS WFL	8/2/58	100	100 WFL
CU	176	OS WFL	8/2/58	100	100 WFL
CU	177	OS WFL	8/2/58	100	100 WFL
CU	178	OS WFL	8/2/58	100	100 WFL
CU	179	OS WFL	8/2/58	100	100 WFL
CU	180	OS WFL	8/2/58	100	100 WFL
CU	181	OS WFL	8/2/58	100	100 WFL
CU	182	OS WFL	8/2/58	100	100 WFL
CU	183	OS WFL	8/2/58	100	100 WFL
CU	184	OS WFL	8/2/58	100	100 WFL
CU	185	OS WFL	8/2/58	100	100 WFL
CU	186	OS WFL	8/2/58	100	100 WFL
CU	187	OS WFL	8/2/58	100	100 WFL
CU	188	OS WFL	8/2/58	100	100 WFL
CU	189	OS WFL	8/2/58	100	100 WFL
CU	190	OS WFL	8/2/58	100	100 WFL
CU	191	OS WFL	8/2/58	100	100 WFL
CU	192	OS WFL	8/2/58	100	100 WFL
CU	193	OS WFL	8/2/58	100	100 WFL
CU	194	OS WFL	8/2/58	100	100 WFL
CU	195	OS WFL	8/2/58	100	100 WFL
CU	196	OS WFL	8/2/58	100	100 WFL
CU	197	OS WFL	8/2/58	100	100 WFL
CU	198	OS WFL	8/2/58	100	100 WFL
CU	199	OS WFL	8/2/58	100	100 WFL
CU	200	OS WFL	8/2/58	100	100 WFL
CU	201	OS WFL	8/2/58	100	100 WFL
CU	202	OS WFL	8/2/58	100	100 WFL
CU	203	OS WFL	8/2/58	100	100 WFL
CU	204	OS WFL	8/2/58	100	100 WFL
CU	205	OS WFL	8/2/58	100	100 WFL
CU	206	OS WFL	8/2/58	100	100 WFL
CU	207	OS WFL	8/2/58	100	100 WFL
CU	208	OS WFL	8/2/58	100	100 WFL
CU	209	OS WFL	8/2/58	100	100 WFL
CU	210	OS WFL	8/2/58	100	100 WFL
CU	211	OS WFL	8/2/58	100	100 WFL
CU	212	OS WFL	8/2/58	100	100 WFL
CU	213	OS WFL	8/2/58	100	100 WFL
CU	214	OS WFL	8/2/58	100	100 WFL
CU	215	OS WFL	8/2/58	100	100 WFL
CU	216	OS WFL	8/2/58	100	100 WFL
CU	217	OS WFL	8/2/58	100	100 WFL
CU	218	OS WFL	8/2/58	100	100 WFL
CU	219	OS WFL	8/2/58	100	100 WFL
CU	220	OS WFL	8/2/58	100	100 WFL
CU	221	OS WFL	8/2/58	100	100 WFL
CU	222	OS WFL	8/2/58	100	100 WFL
CU	223	OS WFL	8/2/58	100	100 WFL
CU	224	OS WFL	8/2/58	100	100 WFL
CU	225	OS WFL	8/2/58	100	100 WFL
CU	226	OS WFL	8/2/58	100	100 WFL
CU	227	OS WFL	8/2/58	100	100 WFL
CU	228	OS WFL	8/2/58	100	100 WFL
CU	229	OS WFL	8/2/58	100	100 WFL
CU	230	OS WFL	8/2/58	100	100 WFL
CU	231	OS WFL	8/2/58	100	100 WFL
CU	232	OS WFL	8/2/58	100	100 WFL
CU	233	OS WFL	8/2/58	100	100 WFL
CU	234	OS WFL	8/2/58	100	100 WFL
CU	235	OS WFL	8/2/58	100	100 WFL
CU	236	OS WFL	8/2/58	100	100 WFL
CU	237	OS WFL	8/2/58	100	100 WFL
CU	238	OS WFL	8/2/58	100	100 WFL
CU	239	OS WFL	8/2/58	100	100 WFL

CAGE	PART NO.	DESCRIPTION	Q-33
1	82-0	LOOP ANTENNA	
2	10 710	OSCILLATOR COIL	
3	10-255	1ST IF TRANSFORMER	
4	10-256	2ND IF TRANSFORMER	
5	20-178	OUTPUT TRANSFORMER	
6	60-151	POWER SWITCH	
7	10 710	OSCILLATOR COIL	
8	70 250	POWER JACK	



**MODEL 0-84**

**MODEL 0-84**

[illegible]

**MODEL 0-530**

