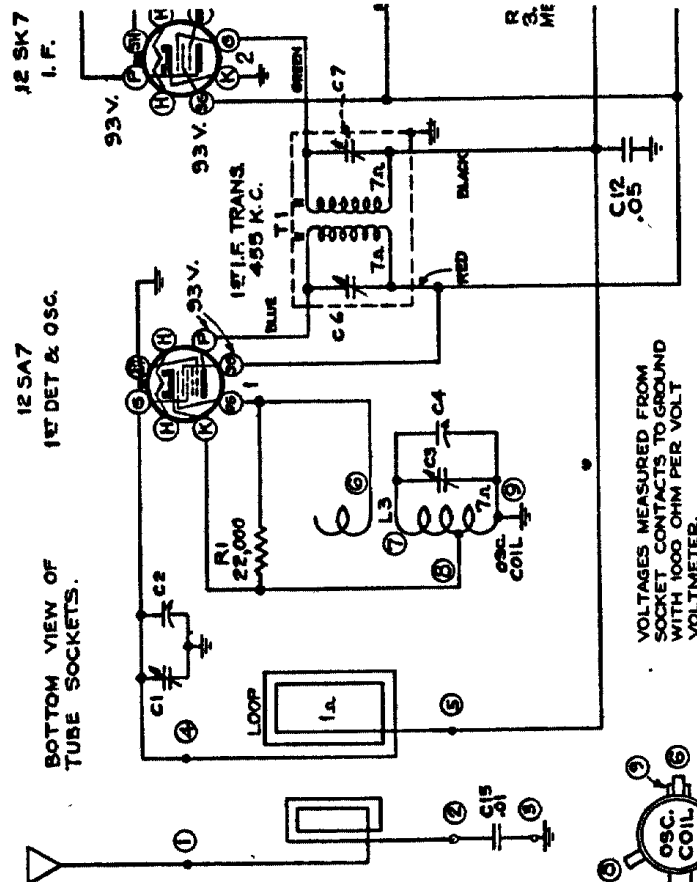


**MODELS R-1204,R-1205**

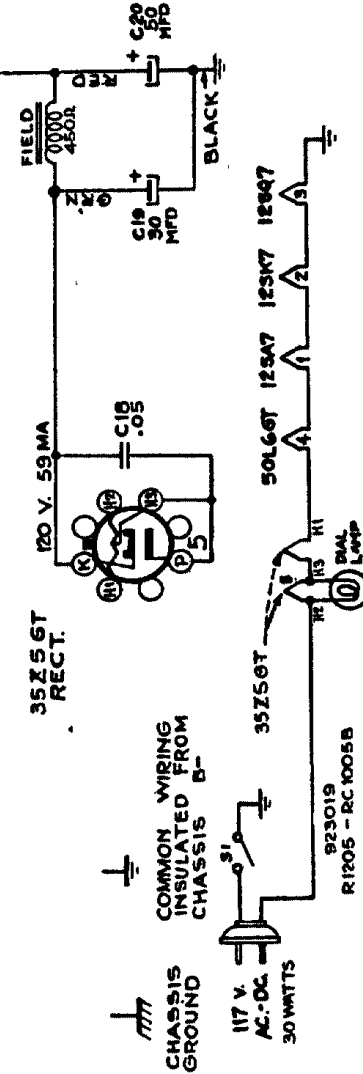


VOLTAGES MEASURED FROM  
SOCKET CONTACTS TO GROUND  
WITH 1000 OHM PER VOLT  
VOLTMETER.

### Model R-1204 Circuit Diagram

Model R-1204 is the same as R-1205 with the exceptions shown above

**8-15-41**



### Model R-1205 Circuit Diagram

IF PEAK 455 KC

Steps	Connect the high side of test-oscillator to—	Tune test-osc. to—	Turn radio dial to—	Adjust the following for max. peak output—
1	1-F grid, in series with .01 mfd.	455 kc	Quiet point 1,700 kc end of dial	C8 and C9 2nd 1-F Transformer
2	1st Det. grid in series with .01 mfd.			C6 and C7 1st 1-F Transformer
3	Ant. terminal in series with 200 mmfd.	1,780 kc	Gang at minimum	C3 (osc.)
4	Radiation loop consisting of two turns of wire 18 inches in diameter located 4 to 6 feet from receiver	1,800 kc	Signal Frequency	C1 (ant.)
5	Repeat steps 3 and 4.			