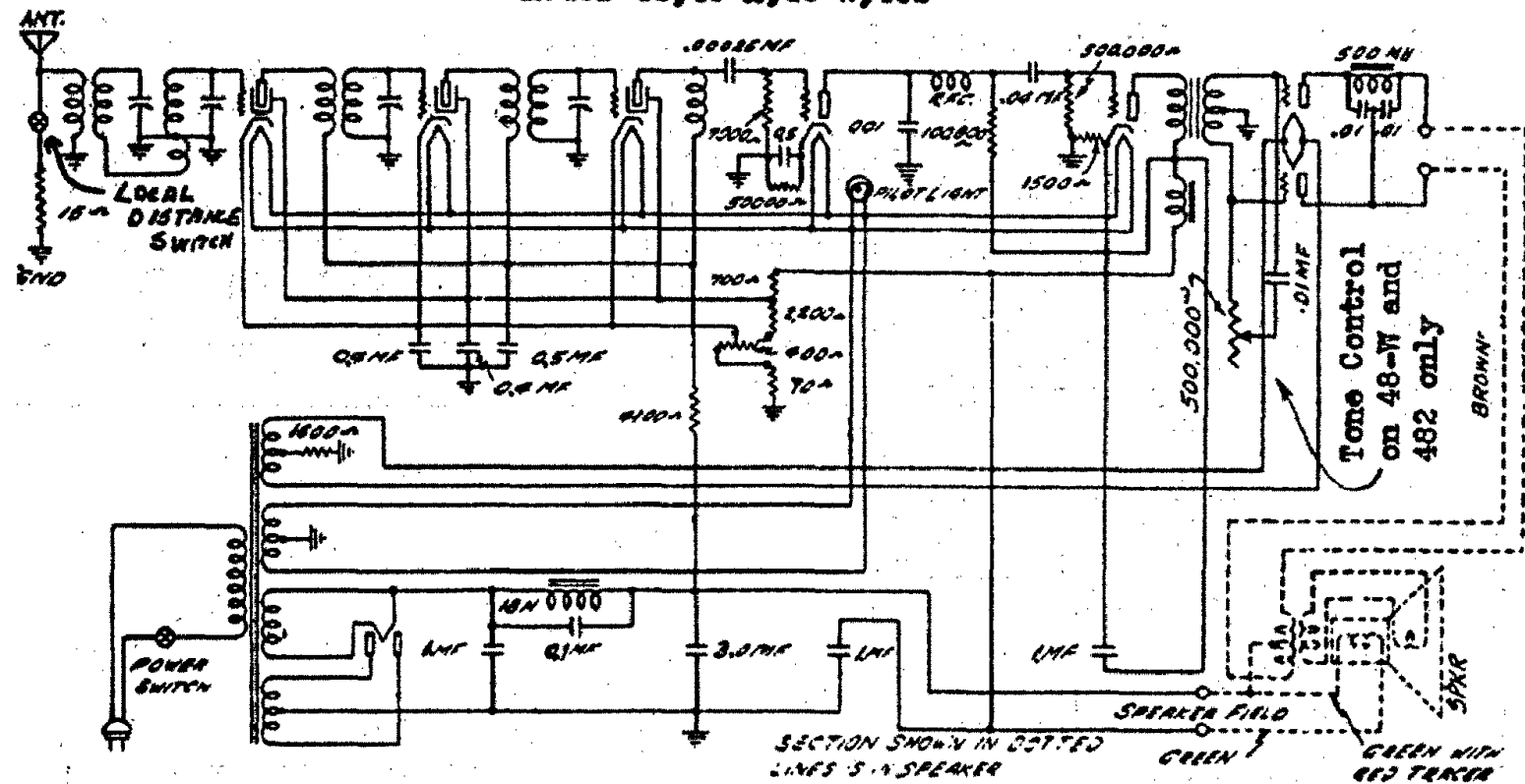
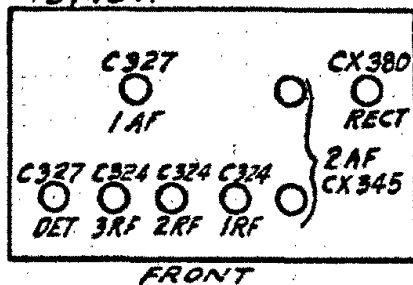


U. S. RADIO & TELEVISION CORP.

Model 48, 48-A, 48-W, 48Z

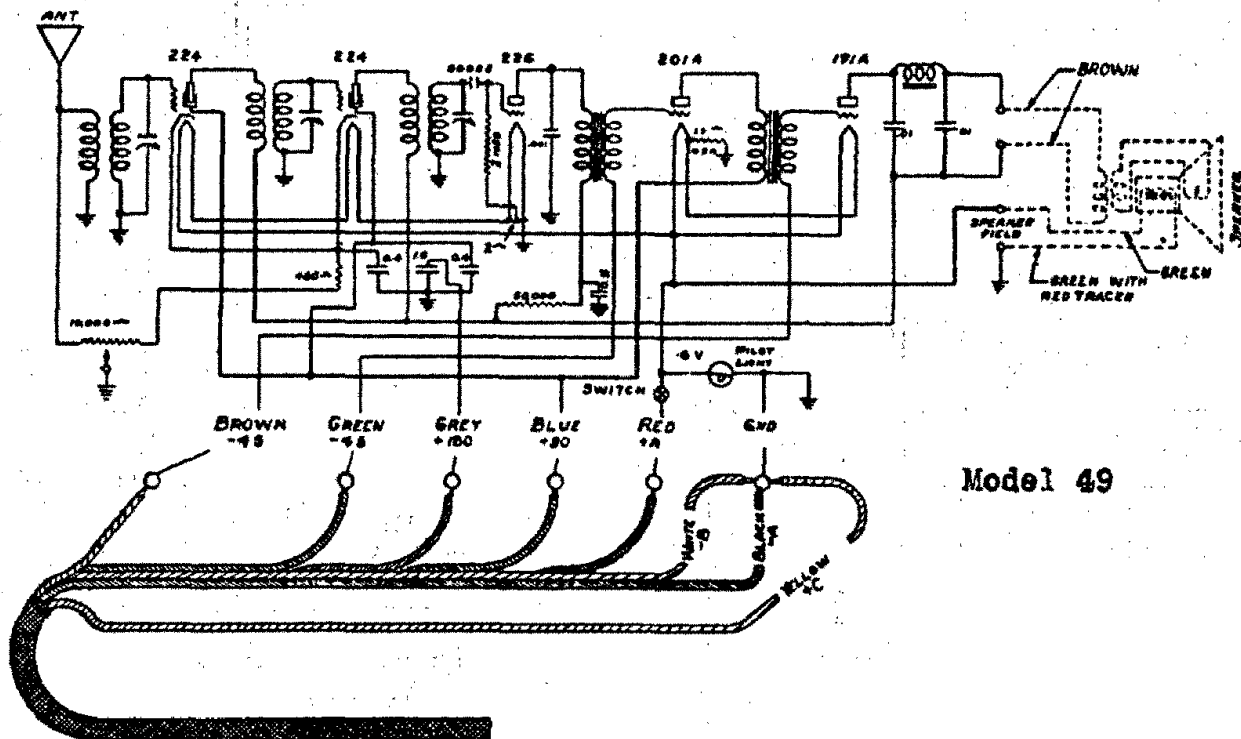


48, 48-A



U. S. RADIO & TELEVISION—Models 48-48A
Line Voltage 115—Volume Control Maximum

TUBE NO. IN POWER TUBES	TYPE OF TUBE	POSITION OF TUBE IN SET	METER READINGS WITH JEWELL TEST PLUG IN CONTACT UP SET									
			OPERATING VOLTAGE					MILLIAMPERES				
			PLATE OR HEATER	PLATE OR HEATER	CATHODE GRID-SCREEN-PRIME-SCREEN-50-2	NORMAL GRID-SCREEN-PRIME-SCREEN-50-2	LATCHER NO. HEATER	SCREEN NO. PLATE	PLATE	TUBE TEST	PLATE	HEATER
1	224	1 R.F.	2.4	181	3.4	90	3.4	.25	4			
2	224	2 R.F.	2.4	181	3.4	90	3.4	.25	4			
3	224	3 R.F.	2.4	181	3.4	90	3.4	.25	4			
4	227	Det.	2.35	75	-	8.0	9.0	-	.2			
5	227	1 A.F.	2.39	105	-	8.0	8.0	-	4.3			
6	245	2 A.F.	2.45	187	-	41	-	-	18			
7	245	3 A.F.	2.45	187	-	41	-	-	18			
8	250	Rect.	5	-	-	-	-	38	38			



Model 49