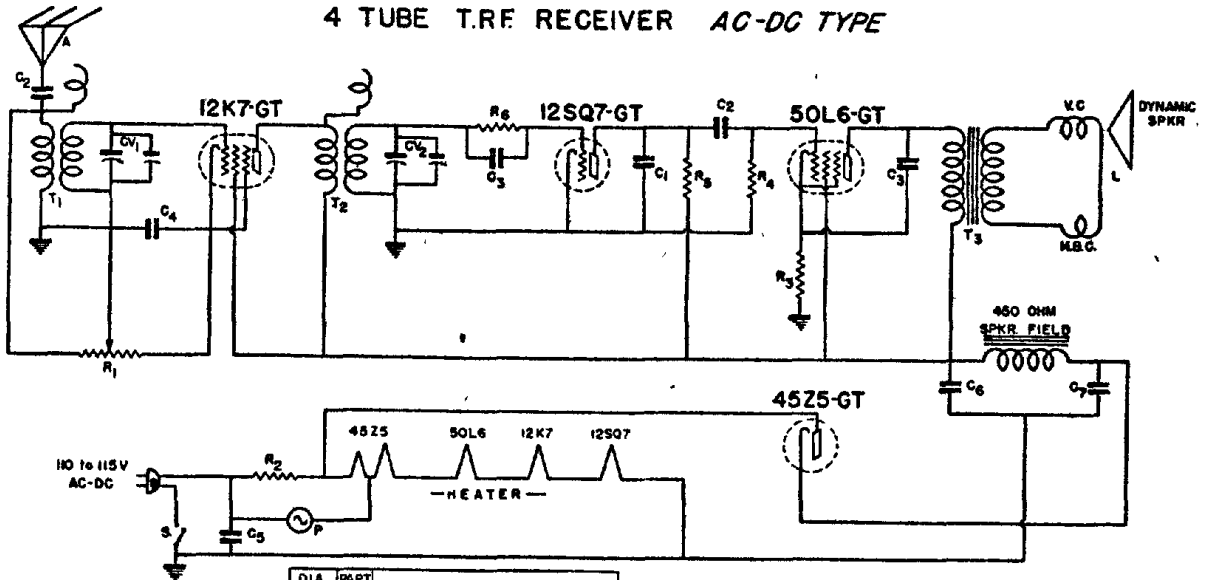


WALGREEN CO.

MODEL 209

MODEL 410

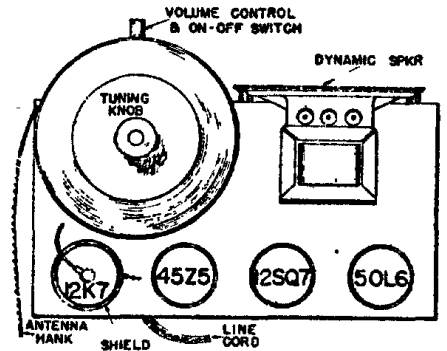
4 TUBE T.R.F. RECEIVER AC-DC TYPE



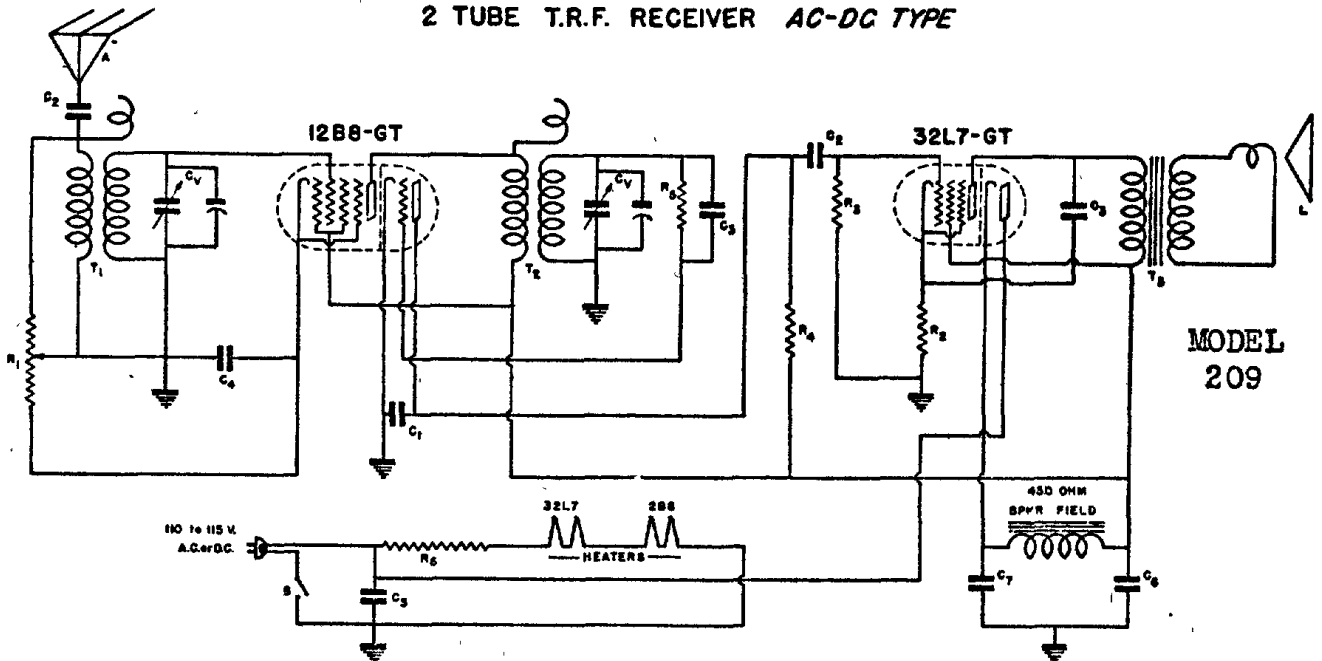
DIA NO.	PART NO.	DESCRIPTION
R ₁	2032	25,000 OHM VOLUME CONTROL
R ₂	—	10 OHM 1/2 WATT CARBON RESIST
R ₃	—	150 OHM 1/2 WATT CARBON RESIST
R ₄	—	1/2 MEGOHM 1/2 WATT CAR RESIST.
R ₅	—	1 MEGOHM 1/2 WATT CARBON RESIST.
R ₆	—	3 MEGOHM 1/2 WATT CAR RESIST
P	—	MAZDA 47 PILOT LIGHT
S	—	LINE SWITCH ON VOLUME CONT.
A	—	ANTENNA WIRE
L	8330	DYNAMIC SPEAKER

DIA NO.	PART NO.	DESCRIPTION
C ₁	—	.00025 MFD. 800V TUB. COND.
C ₂	—	.01 MFD. 400 V. TUBULAR COND
C ₃	—	.02 MFD. 400 V TUBULAR COND
C ₄	—	.05 MFD. 200V TUBULAR COND
C ₅	—	.05 MFD. 400V TUBULAR COND
C ₆	IN 343	10 MFD. 150 V. TUBULAR COND.
C ₇	IN 343	30 MFD. 150 V. TUBULAR COND
CV ₁₋₂	628C	2 GANG VARIABLE COND
T ₁	A-10	ANTENNA COIL
T ₂	R-10	R.F. COIL
T ₃	IN 8330	SPEAKER TRANSFORMER

MODEL
410



2 TUBE T.R.F. RECEIVER AC-DC TYPE



MODEL
209

LEBEND	OUR PART NO.	DESCRIPTION
C ₁	—	.00025 MFD 800V TUBULAR CONDENSER
C ₂	—	.01 MFD 400V TUBULAR CONDENSER
C ₃	—	.02 MFD 400V TUBULAR CONDENSER
C ₄	—	.05 MFD 200V TUBULAR CONDENSER
C ₅	—	.05 MFD 400V TUBULAR CONDENSER
C ₆	IN 344	10 MFD 150V ELECTROLYTIC CONDENSER
C ₇	IN 344	30 MFD 150V ELECTROLYTIC CONDENSER
CV	628C	2 GANG VARIABLE CONDENSER
A	—	AERIAL WIRE
L	833	DYNAMIC SPEAKER

LEBEND	OUR PART NO.	DESCRIPTION
R ₁	2031	10,000 OHM VOLUME CONTROL
R ₂	—	150 OHM 1/2 WATT CARBON RESISTOR
R ₃	—	500,000 OHM 1/2 WATT CARBON RESISTOR
R ₄	—	1 MEGOHM 1/2 WATT CARBON RESISTOR
R ₅	—	3 MEGOHM 1/2 WATT CARBON RESISTOR
R ₆	1818	240 OHM RESISTANCE LINE CORD
T ₁	A-10	ANTENNA COIL
T ₂	R-10	R.F. COIL
T ₃	ON 833	SPEAKER TRANSFORMER
S	—	LINE SWITCH ON VOLUME CONTROL

