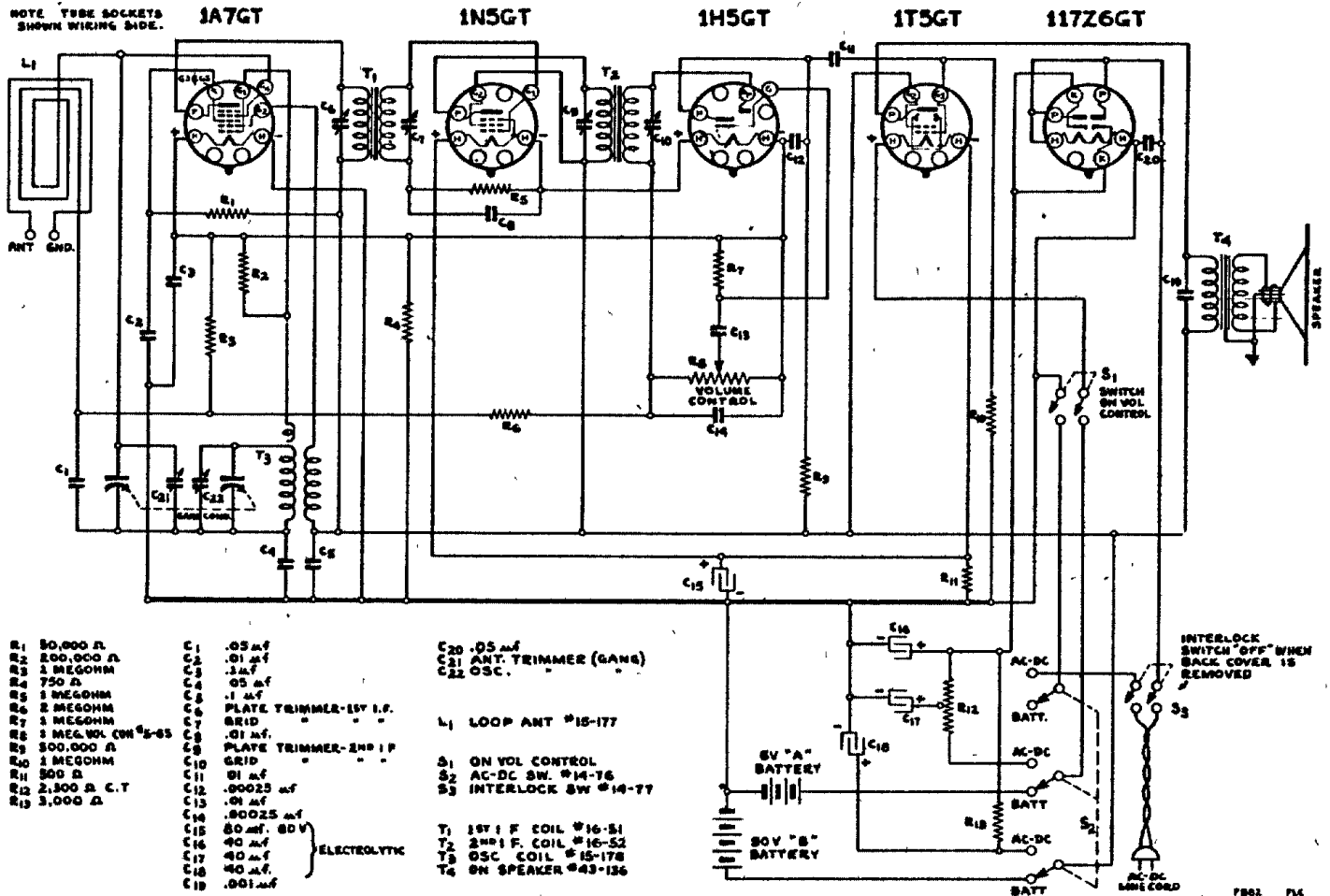


TRAV-LER RADIO & TELEV. CORP. MODEL FB82

NOTE: TUBE SOCKETS SHOWN WIRING SIDE.



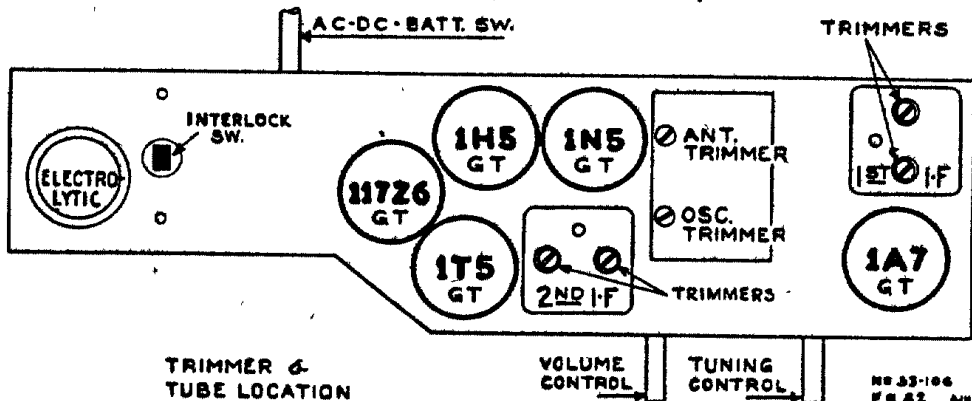
ALIGNMENT PROCEDURE:

Set the pointer to 1500 K. C. Connect the generator leads to the 1A7G grid and to the chassis thru a .1 Mfd. condenser. Adjust the I.F. trimmers for maximum output indication.

Connect the generator leads to the 1A7G grid and to the chassis thru a .1 Mfd. condenser. Set the signal generator at 1400 KC., and set the receiver pointer at 1400 KC. Adjust the BC. oscillator shunt trimmer for resonance.

Couple the generator loosely to the set and adjust the BC. loop antenna trimmer at 1400 KC. for maximum output.

NOTE: POWER AUTOMATICALLY TURNED "OFF" WHEN CABINET BACK PANEL IS REMOVED. (INTERLOCK SWITCH).



TECHNICAL INSTRUCTIONS:

A good output meter should be used in all alignment adjustments. This meter should be of the high resistance A. C. type, and is connected across the voice coil of the speaker, using the low voltage range of the meter. (0 to 1.5 or 2 volts). Use the lowest possible readings in order to minimize the A. V. C. effect.