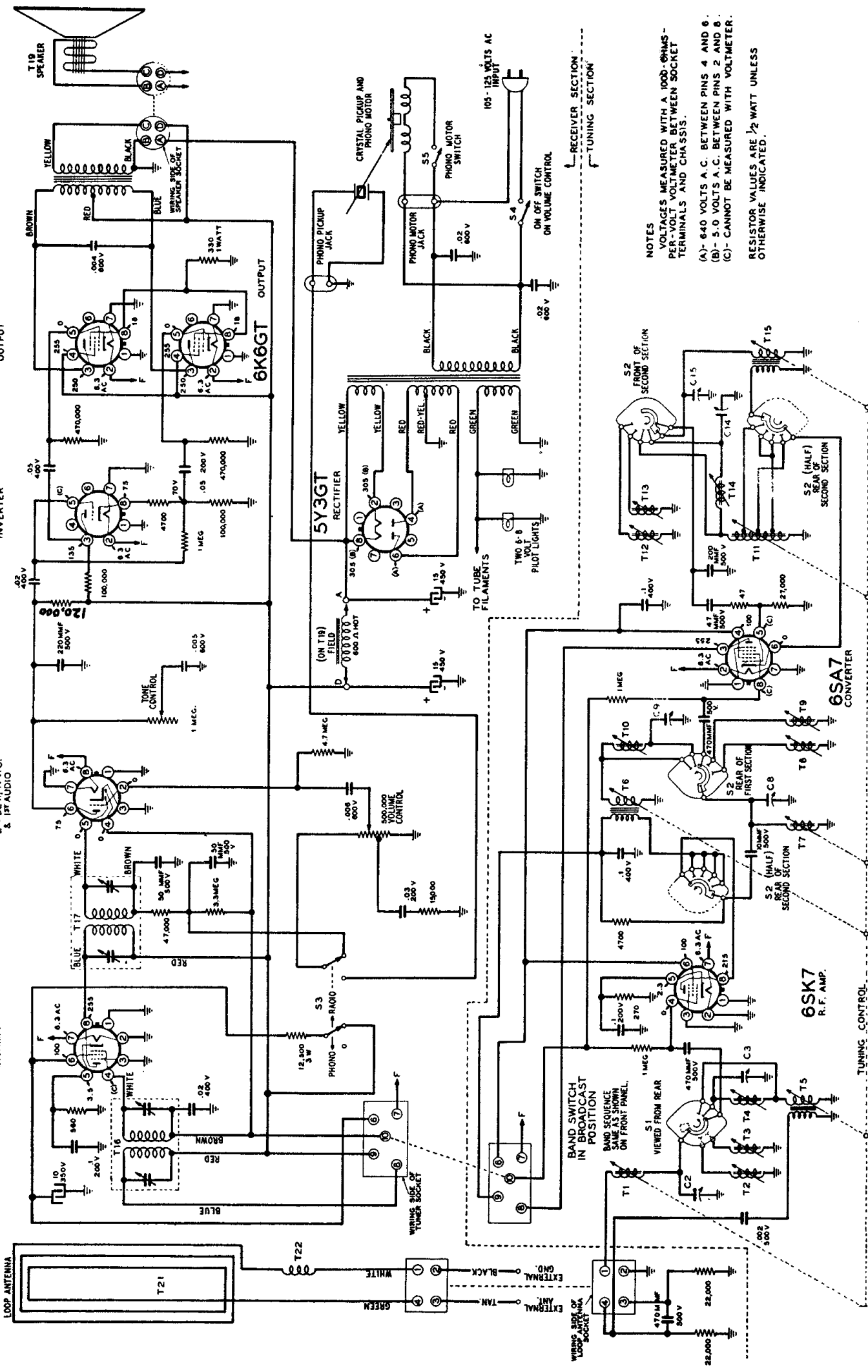


6SK7
1 F. AMP.

6SQ7
2-40 DET., A.V.C.
& 12F AUDIO

6J5GT
INVERTER

6K6GT
OUTPUT



NOTES
VOLTAGES MEASURED WITH A 1000-Ω/IMP-
PER-VOLT VOLTMETER BETWEEN SOCKET
TERMINALS AND CHASSIS.
(A)- 640 VOLTS A.C. BETWEEN PINS 4 AND 6.
(B)- 5.0 VOLTS A.C. BETWEEN PINS 2 AND 8.
(C)- CANNOT BE MEASURED WITH VOLTMETER.
RESISTOR VALUES ARE 1/2 WATT UNLESS
OTHERWISE INDICATED.

MODELS D1747 & D1748

WESTERN AUTO SUPPLY COMPANY

NOTE: Before removing chassis, take off escutcheon and pull pointer from pointer carriage.

ALIGNMENT PROCEDURE

MECHANICAL ADJUSTMENT—The core tuning bar (see illustration of iron cores) and dial pointer must be adjusted mechanically before any electrical alignment is attempted. Rotate the manual tuning control until the core bar is farthest from the coils. For proper adjustment the bar should be approximately 1/32 of an inch from the two rod guide angles.

With the core bar in this position, adjust the dial pointer to coincide with 1600 kc on the dial scale.

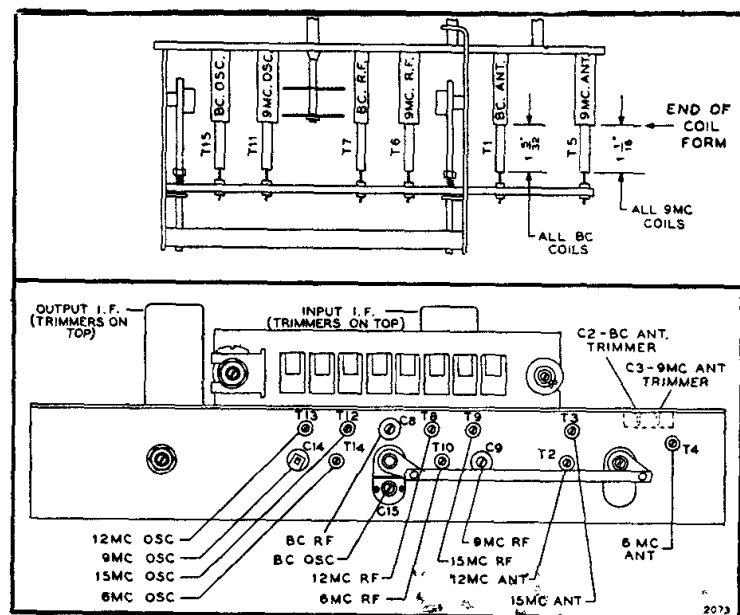
Rotate the cores of each of the three broadcast coils (see illustration) until the end of the coil is 1-5/32" from the end of the coil form. Rotate the three 9-mc cores until this dimension is 1-1/16" for these coils. After these adjustments have been made, the unit can be aligned electrically.

ELECTRICAL ADJUSTMENT—To align the set make the following preliminary adjustments: Set the tone control for treble tone; set the volume control at maximum; connect the ground post of the signal generator to the radio chassis; connect the output meter across a 3.2-ohm output load; and allow the receiver and signal generator to warm up for several minutes.

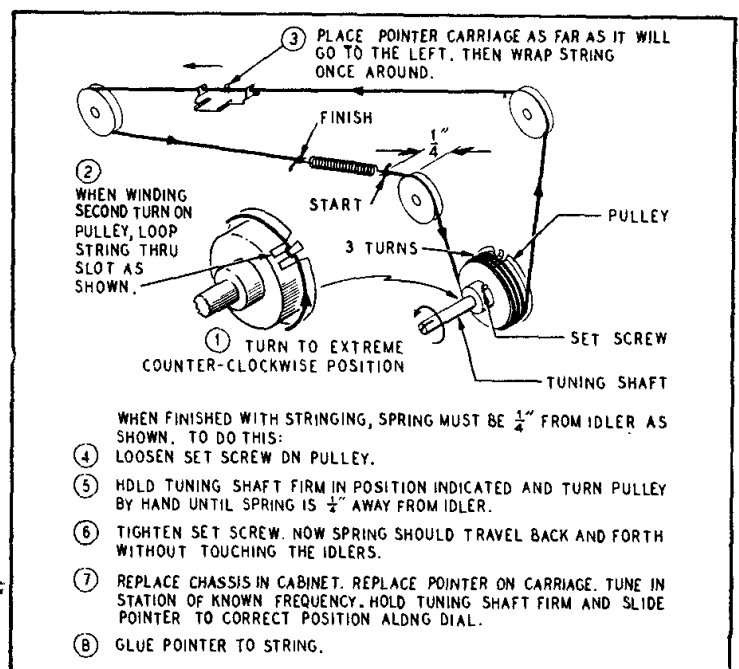
Align the set according to the sequence given in the chart. The indicated dummy antenna is to be connected in series between the signal generator output lead and the receiver. Adjust the set for maximum output; reduce the input as needed to keep the output near 1.3 volts.

Locations of all trimmers and coils are shown elsewhere in this manual. After adjustment, seal the coil cores with colodion or a similar substance (do not use cement).

BAND SWITCH SETTING	SIGNAL GENERATOR			DIAL POINTER SETTING	ADJUST TO MAXIMUM OUTPUT (in order shown)
	Frequency	Coupling Capacitor	Connection to Radio		
Broadcast (for I. F.)	455 kc	.1 mf	Grid (pin 8) of converter (6SA7)	1600 kc	Trimmers on output and input I. F. cans
Broadcast	1600 kc	200 mmf	Antenna lead	1600 kc	BC Osc. trimmer C15 BC R. F. trimmer C8 BC Ant. trimmer C2
	1400 kc	200 mmf	Antenna lead	1400 kc	Rotate cores of BC R. F. coil T7 and BC Ant. coil T1
31 Meter	9.6 mc	400 ohms	Antenna lead	9.6 mc	9 mc Osc. trimmer C14 9 mc R. F. trimmer C9 9 mc Ant. trimmer C3
49 Meter	6.1 mc	400 ohms	Antenna lead	6.1 mc	6 mc Osc. coil T14 6 mc R. F. coil T10 6 mc Ant. coil T4
25 Meter	11.8 mc	400 ohms	Antenna lead	11.8 mc	12 mc Osc. coil T13 12 mc R. F. coil T8 12 mc. Ant. coil T2
19 Meter	15.2 mc	400 ohms	Antenna lead	15.2 mc	15 mc. Osc. coil T12 15 mc R. F. coil T9 15 mc Ant. coil T3



Coils and Trimmers



Replacement of Drive Cord