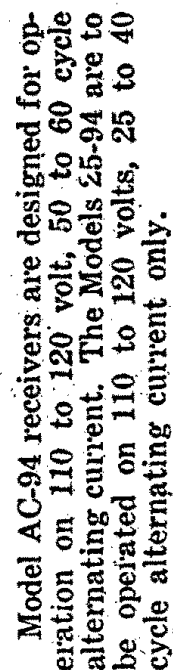


MODEL AC-94, 25-94

Peak Frequency  
175 KC



No.	Stage	Type Tube	A Volts	B Volts	Cont. Grid Volts	Cath. Volts	Ip' Norm.	SG Volts
1	r. f	51	2.1	178	1.5	2.5	4.5	82
2	1st det.	51	2.1	160	9.5	10.	1.2	75.
3	Osc.	27	2.05	120	0	0	10	0
4	I. F.	51	2.05	180	.6	3.	3	82.
5	2nd det.	24	2.05	220	8.	8.	.25	85.
6	A.V.C.	24	2.05	50	12.	20	0	37
7	A.F.	47	2.1	260	16.5		40	275.
8	Rect.	80	4.6	160			40	

**Line Voltage 115-60 cycle.**

**NOTE:** Filaments and cathodes of R.F., I.F., and first detector are 95 volts positive with respect to ground.  
**NOTE:** Since resistance tolerances in the sets are plus or minus 10%, and tubes may vary over 20%, your