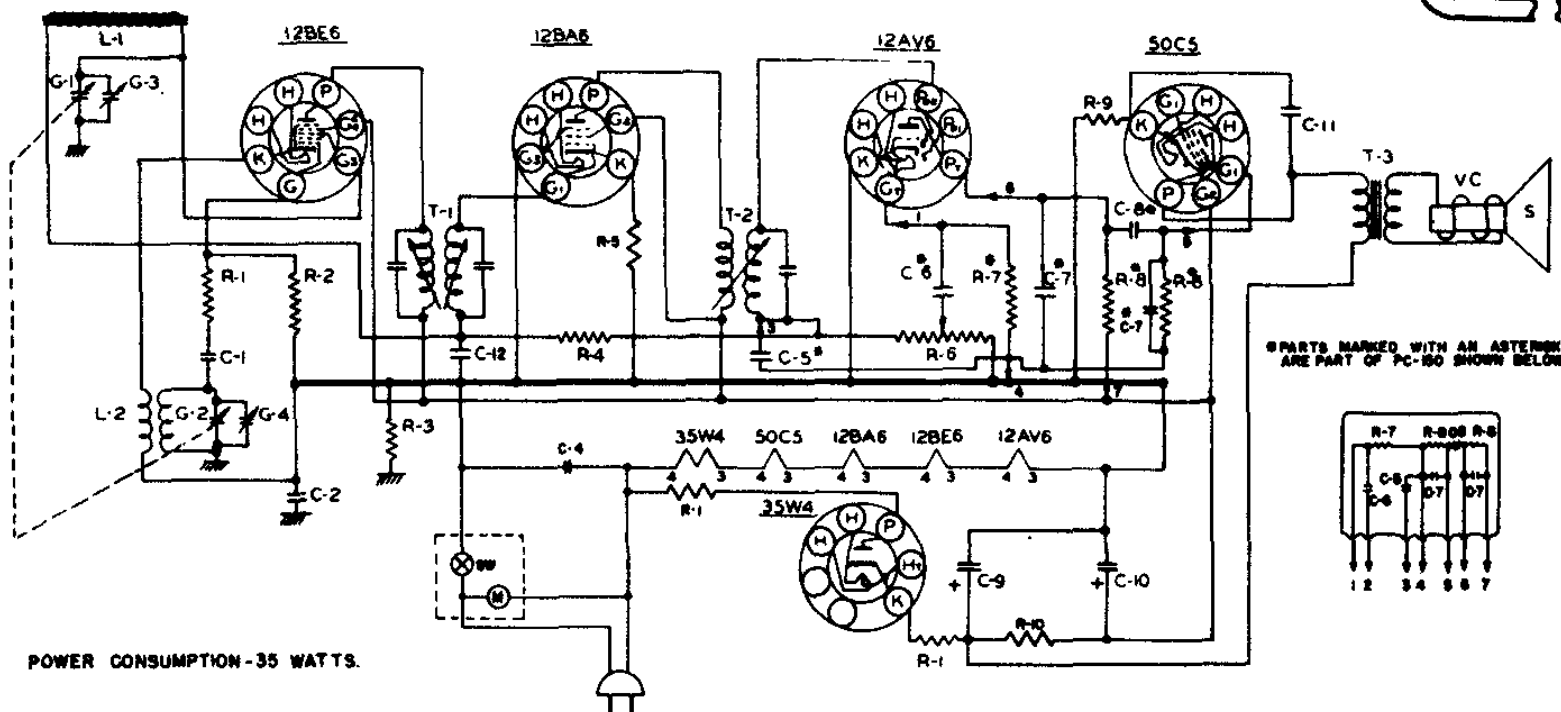
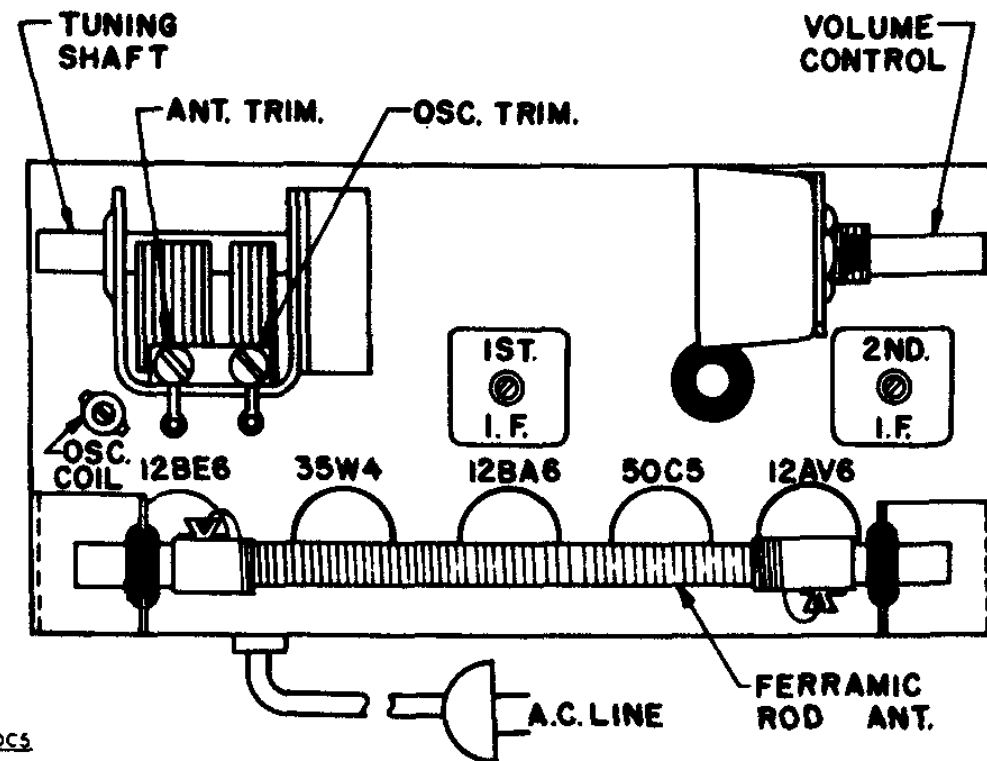


TRAVLER

Models 5182-B, 5182-M

Align IF sections at 455 KC, adjust oscillator trimmer with signal generator producing 1630 KC, antenna trimmer with a 1400 KC signal.

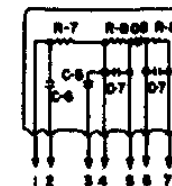


POWER CONSUMPTION-35 WATTS.

CHASSIS GROUND

110-125 V A.C. ONLY

*PARTS MARKED WITH AN ASTERISK ARE PART OF PC-150 SHOWN BELOW.



| PART NO. | DESCRIPTION |
|----------|-------------------------------------|
| R-17 | R-1 33 \sim RESISTOR 1/2W 20% |
| R-9 | R-2 22M \sim RESISTOR 1/2W 20% |
| R-20 | R-3 220M \sim RESISTOR 1/2W 20% |
| R-23 | R-4 3.3MEG. RESISTOR 1/2W 20% |
| R-12 | R-5 1000 Ω RESISTOR 1/2W 10% |
| VC-49 | R-6 1 MEG. VOLUME CONTROL |
| | R-7 6.8 MEG. |
| | R-8 470M \sim |
| R-14 | R-9 150 \sim RESISTOR 1/2W 20% |
| R-25 | R-10 2200 Ω RESISTOR 1W 10% |
| L1-10 | T-1 INPUT I.F. TRANSFORMER |
| L1-11 | T-2 OUTPUT I.F. TRANSFORMER |
| GC-12 | C-1 47 MMFD. GERM. CONDENSER |
| PC-6 | C-2 .1MFD. CONDENSER 400 V. |
| PC-8 | C-4 .05MFD. CONDENSER 400 V. |
| PC-5 | C-5* 220MMFD. |
| | C-6* 200MMFD. |
| | C-7* 250MMFD. |
| | C-8* 500MMFD. |
| | C-9 40MMFD. |
| EC-12A | C-10 20MMFD. 150V.D.C. ELECTROLYTIC |
| PC-6 | C-11 .005MFD. CONDENSER |
| GC-4 | C-12 .01MFD. GERM. CONDENSER |
| GC-12 | C-1 TUNING CONDENSER |
| SPK-22B | S 4" P.M. SPEAKER |
| OR | VC VOICE COIL |
| SPK-36 | T-3 OUTPUT TRANSFORMER |
| LL-36 | L-1 FERRIMIC ROD ANTENNA |
| LO-20 | L-2 OSC. COIL |
| CH-1 | M ELECTRIC CLOCK |