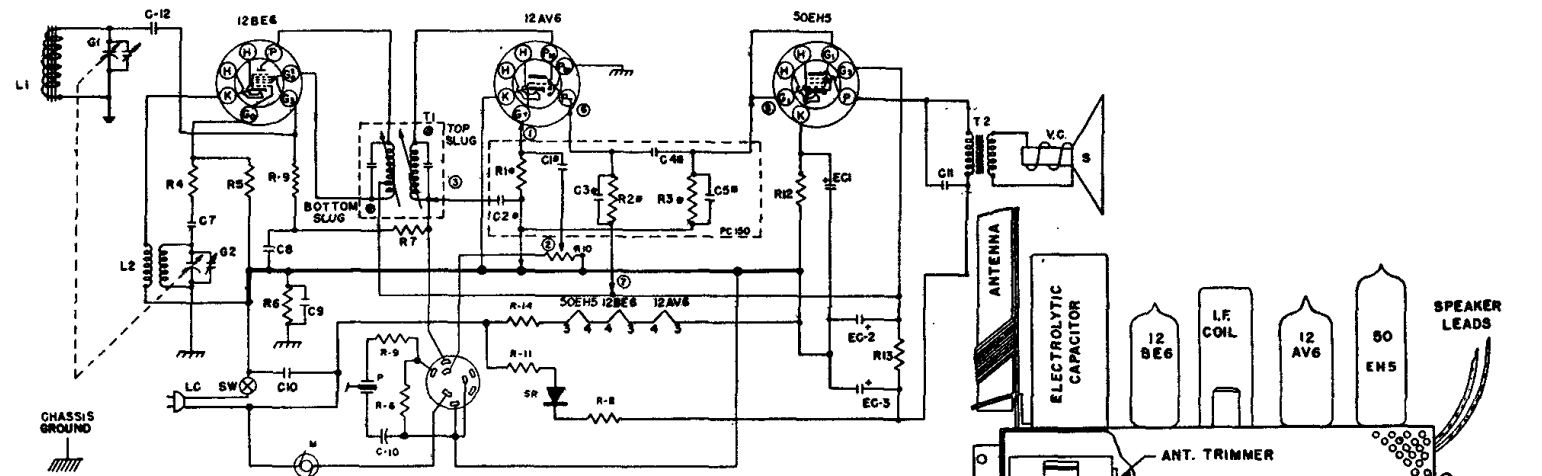
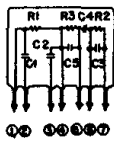


TRAVLER MODEL 48-314



PART NO.	SYMBOL	DESCRIPTION
CG-12	C7	47MMF CERAMIC CONDENSER
PG-5	C8	05MF PAPER CONDENSER 400V
PG-5	C9	05MF PAPER CONDENSER 400V
PG-5	C10	05MF PAPER CONDENSER 400V
CG-3	C11	005MF DISC CONDENSER 800V
MC-19	PC-150	COUPLATE
IR-17	R-4	330HM 1/2W 20% CARBON RESISTOR
IR-9	R-5	22K OHM 1/2W 20% CARBON RESISTOR
IR-20	R-6	220K OHM 1/2W 20% CARBON RESISTOR
IR-25	R-7	3.3MEG OHM 1/2W 20% CARBON RESISTOR
IR-41	R-8	47 OHM 1W 10% CARBON RESISTOR
IR-12	R-9	1MEG OHM 1/2W 20% CARBON RESISTOR
CG-33	C-12	220MMFD. 500V 20% CERAMIC TUB COND.
VC-64	R-10	1MEG OHM VOLUME CONTROL
IR-17	R-11	330HM 1/2W 20% CARBON RESISTOR
IR-14	R-12	150 OHM 1/2W 20% CARBON RESISTOR
IR-25	R-13	2200 OHM 1W 10% CARBON RESISTOR
EG-71A	EC-1	20MF-150WVDC ELECTROLYTIC CONDENSER
EG-71A	EC-2	30MF-150WVDC
EG-71A	EC-3	40MF-150WVDC
CG-1	LC	A.C. LINE CORD
CG-15	G1	ANT. SECTION-WITH TRIMMER GANG
CG-15	G2	OSC. SECTION-WITH TRIMMER CONDENSER
LL-55	L1	FERRAMIC ROD ANTENNA COIL
LO-28	L2	OSCILLATOR COIL
LI-12	T1	455 KC TAPPED PRIMARY-1F COIL
SPK-22-C	SW	SPST SWITCH(PART OF VOLUME CONTROL)
	T2	OUTPUT TRANSFORMER PM
	VC	VOICE COIL WINDING SPEAKER
	S	SPEAKER

* PARTS MARKED WITH AN ASTERISK ARE PART OF PC-150 SHOWN BELOW.

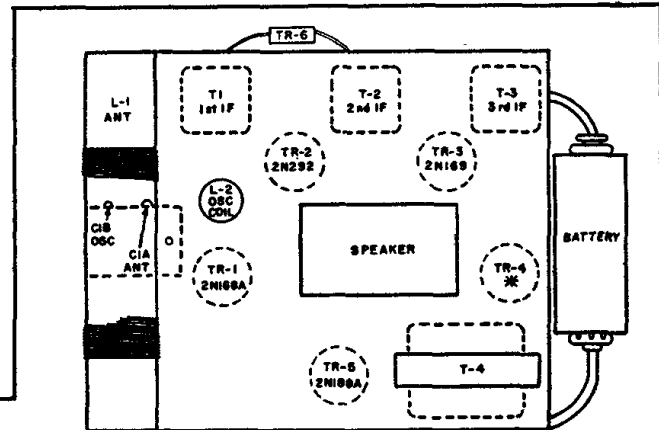


COMPONENTS & VALUES OF PC-150

C1-2000MMF
C2-220MMF
C3-250MMF
C4-5000MMF
R1-6.8MEG OHM
R2-47MEG OHM
R3-47MEG OHM

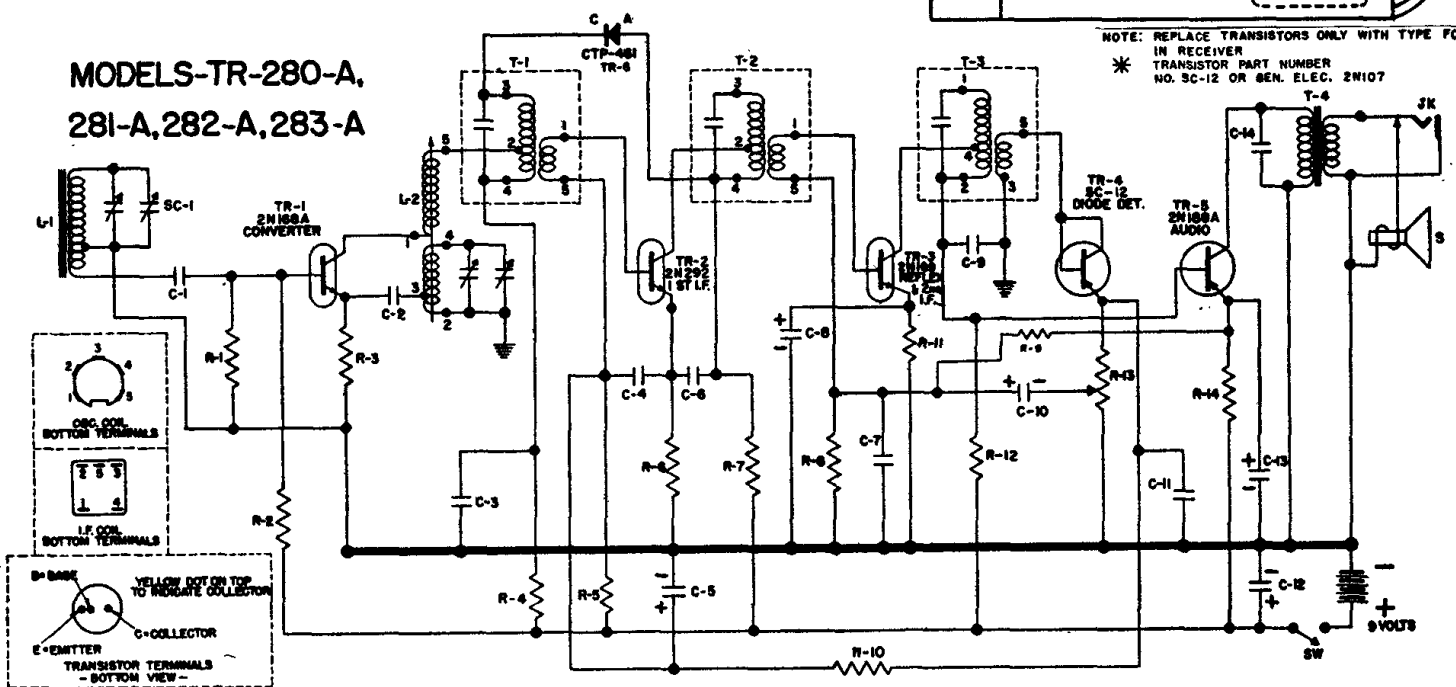
PART NO.	SYMBOL	DESCRIPTION
3-M-13	M	110V. MOTOR-3 SPEED
PU-34	P	PICKUP LP ARM SSR-TC-R-M CARTRIDGE
WR-47	R-14	250 OHM-10 W. 5% WIREWOUND
SR-3	SR	65 ML. RECTIFIER

I.F. 455 KC.



NOTE: REPLACE TRANSISTORS ONLY WITH TYPE FOUND IN RECEIVER
* TRANSISTOR PART NUMBER NO. SC-12 OR GEN. ELEC. 2N107

MODELS-TR-280-A,
281-A,282-A,283-A



PART NO.	SYMBOL	DESCRIPTION	PART NO.	SYMBOL	DESCRIPTION	PART NO.	SYMBOL	DESCRIPTION	PART NO.	SYMBOL	DESCRIPTION
CG-55	C-1	02 MFD. CERAMIC DISC	IR-64	R-1	10K OHMS 1/2W 10% CARBON RESISTOR	LI-22	T-1	1W STAGE I.F. TRANSFORMER	J-1	JK	EARPHONE JACK
CG-35	C-2	01 MFD.	IR-150	R-2	33K	LI-23	T-2	2W STAGE I.F. TRANSFORMER			
CG-44	C-3	01 MFD.	IR-29	R-3	1500	LI-24	T-3	3W STAGE I.F. TRANSFORMER			
CG-46	C-4	05	IR-199	R-4	470	AT-33	TR-4	OUTPUT TRANSFORMER			
CG-46	C-5	05	IR-199	R-5	82K	SC-8	TR-5	2N188A CONVERTER TRANSISTOR			
CG-46	C-6	05	IR-199	R-6	330	SC-9	TR-6	2N292 1st IF			
CG-46	C-7	05	IR-199	R-7	4700	SC-10	TR-7	2N188A 2nd IF AMPLIFIER			
CG-46	C-8	05	IR-199	R-8	4700	SC-11	TR-8	SC-12 OR 2N107 DIODE			
CG-46	C-9	05	IR-199	R-9	39K	SC-12	TR-9	2N188A AUDIO OUTPUT TRANSISTOR			
CG-46	C-10	05	IR-199	R-10	3300	SC-13	TR-10	SC-12 OR 2N107 DIODE			
CG-46	C-11	05	IR-199	R-11	470	SC-14	TR-11	2N188A AUDIO OUTPUT TRANSISTOR			
CG-46	C-12	05	IR-199	R-12	4700	SC-15	TR-12	GTP-461 GLASS-GERMANIUM DIODE			
CG-46	C-13	05	IR-199	R-13	1500	SC-16	TR-13	GTP-461 GLASS-GERMANIUM DIODE			
CG-46	C-14	05	IR-199	R-14	10K OHMS VOLUME CONTROL WITH 82K 2W	SC-17	TR-14	GTP-461 GLASS-GERMANIUM DIODE			
						SC-18	TR-15	10K OHM 1/2W 10% CARBON RESISTOR			