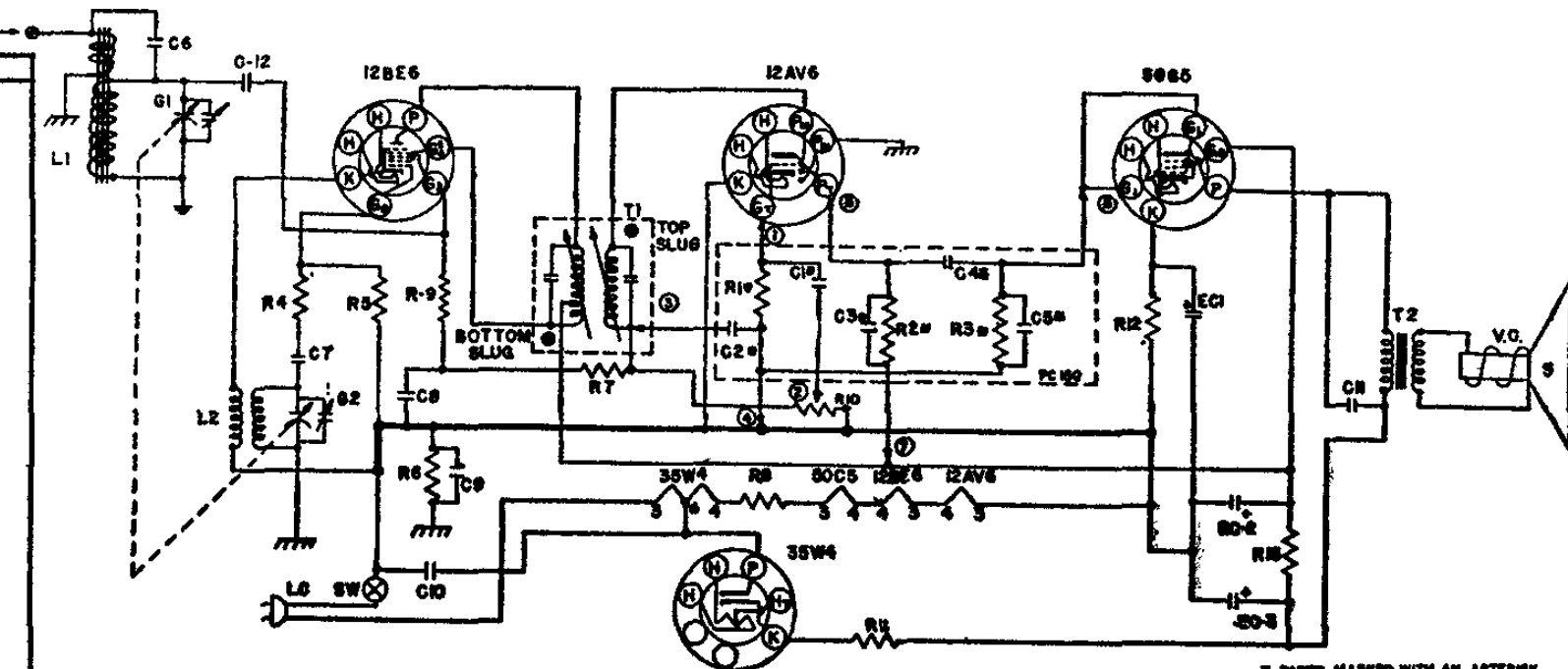


TRAVLER MODEL 46-37

EXTERNAL
ANTENNA



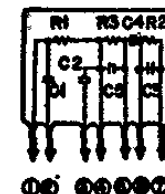
CHASSIS GROUND

IF 455 KC.

COMPONENTS & VALUES OF PC-150

C1=2000MMR
C2=220MMR
C3=250MMR
C4=5000MMR
R1=6.8MEGOM
R2=47MEGOM
R3=47MEGOM

5 PARTS MARKED WITH AN ASTERISK
ARE PART OF PC-150 SHOWN BELOW



PART NO.	SYMBOL	DESCRIPTION
CG-21	C8	10MMR CERAMIC CONDENSER
CG-12	C7	47MMR CERAMIC CONDENSER
PC-5	C6	.05ME PAPER CONDENSER 400V.
PC-6	C9	.05ME PAPER CONDENSER 400V.
PC-6	C10	.05ME PAPER CONDENSER 400V.
PC-6	C11	.005ME PAPER CONDENSER 600V.
MG-19	PC-150	COUPLATE
IR-17	R-4	33OHM 1/2W. 20% CARBON RESISTOR
IR-9	R-5	22K OHM 1/2W. 20% CARBON RESISTOR
IR-20	R-6	220K OHM 1/2W. 20% CARBON RESISTOR
IR-23	R-7	3.3MEGOM 1/2W. 20% CARBON RESISTOR
IR-41	R-8	47 OHM 1W 10% CARBON RESISTOR
IR-12	R-9	1MEGOM 1/2W. 20% CARBON RESISTOR
CG-33	C-12	220MMFD. 500V. 20% CERAMIC TUB. COND.
VC-64	R-10	1MEGOM VOLUME CONTROL
IR-17	R-11	33OHM 1/2W. 20% CARBON RESISTOR
IR-14	R-12	150 OHM 1/2W. 20% CARBON RESISTOR
IR-25	R-13	2200 OHM 1W. 10% CARBON RESISTOR
EG-28	EG1	10ME-25WVDC.
	EG2	20ME-50WVDC.
	EG3	40ME-50WVDC.
CG-4	LC	A.C. LINE CORD
GC-15	G1	ANT. SECTION-WITH TRIMMER
	G2	OSC. SECTION-WITH TRIMMER
LL-32	L1	FERRAMIC ROD ANTENNA COIL
LO-21	L2	OSCILLATOR COIL
LI-12	T1	455 KC. TAPPED PRIMARY-IF COIL
IPK-37	SW	S.P.S.T. SWITCH(PART OF VOLUME CONTROL)
	T2	OUTPUT TRANSFORMER
	VC	VOICE COIL WINDING
	S	SPEAKER

EXTERNAL
ANTENNA

CHASSIS GROUND

IF 455 KC.

COMPONENTS & VALUES OF PC-150

C1=2000MMR
C2=220MMR
C3=250MMR
C4=5000MMR
R1=6.8MEGOM
R2=47MEGOM
R3=47MEGOM

5 PARTS MARKED WITH AN ASTERISK
ARE PART OF PC-150 SHOWN BELOW

