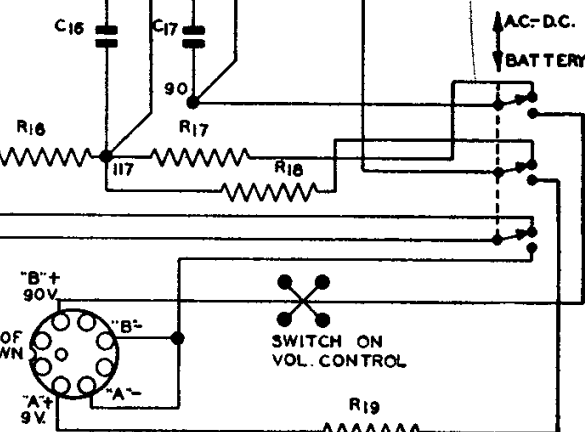
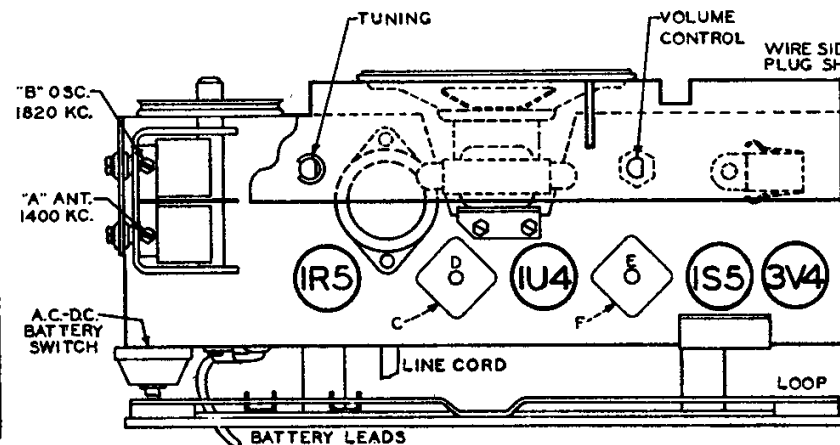


DIA. NO.	PART NO.	DESCRIPTION	DIA. NO.	PART NO.	DESCRIPTION
R1	N-2973	100,000 OHM .5W 10%	C4	N-8054	7 MMFD 500V 10%
R2	N-8012	22,000 OHM .5W 10%	C5	N-1344	.01 MFD 400V 20%
R3	N-4081	4.7 MEGOHM .5W 20%	C6	N-4937	.09 MFD 200V 10%
R4	N-4026	6.8 MEGOHM .5W 20%	C7	N-8015	100 MMFD 500V
R5	N-4087	180 OHM .5W 10%	C8	N-4894	.005 MFD 600V -15+40%
R6	N-4063	47,000 OHM .5W 20%	C9	N-8015	100 MMFD 500V
R7	N-8007	1 MEG. VOLUME CONTROL	C10	N-4894	.005 MFD 600V -15+40%
R8	N-4026	6.8 MEGOHM .5W 20%	C11	N-1345	.05 MFD 200V 20%
R9	N-2976	1.0 MEGOHM .5W 10%	C12	N-4894	.005 MFD 600V -15+40%
R10	N-4277	22 MEGOHM .5W 20%	C13	N-1376	.02 MFD 400V 20%
R11	N-8009	10 OHM .5W 10%	C14		100 MFD 25V
R12	N-5159	390 OHM .5W 10%	C15	N-8008	100 MFD 25V ELECTRO-
R13	N-5473	3.9 MEGOHM .5W 10%	C16	N-8008	30 MFD 150V LYTIC
R14	N-8053	12 MEGOHM .5W 10%	C17		30 MFD 150V
R15	N-8052	240 OHM .5W 5%	C18	N-1348	.05 MFD 400V 20%
R16	N-8113	88 OHM 1.5W 10%			
R17	N-4896	2200 OHM .5W 10%			
R18	N-8006	2400 OHM .5W 5%			
R19	N-8010	18 OHM .5W 10%			
C1	N-1349	.05 MFD 200V 20%	1	N-5972	LOOP COIL
C2	N-1351	.1 MFD 200V -10+20%	2	N-5936	2 GANG CAPACITOR
C3	N-1345	.05 MFD 200V 20%	3	N-8003	OSCILLATOR COIL
			4	N-5973	1ST I.F.
			5	N-5973	2ND I.F.
			6	N-8004	OUTPUT TRANSFORMER
			7	N-5986	4" P.M. SPEAKER
			8	N-5985	SELENIUM RECTIFIER

ALL VOLTAGES SHOWN ARE MEASURED WITH A VACUUM TUBE VOLTMETER. INPUT VOLTAGE 117 A.C.



I.F. 455 KC.

SONORA RADIO  
MODELS WD-233,  
WD-249. WDU-233 -249