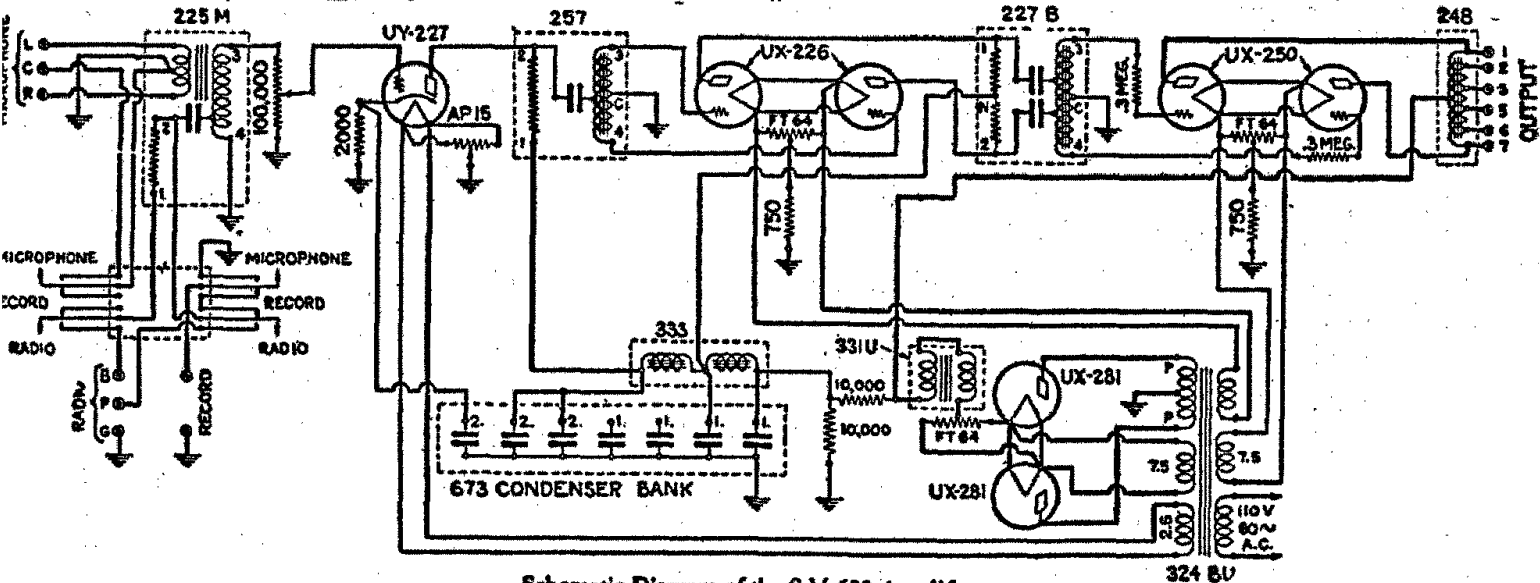


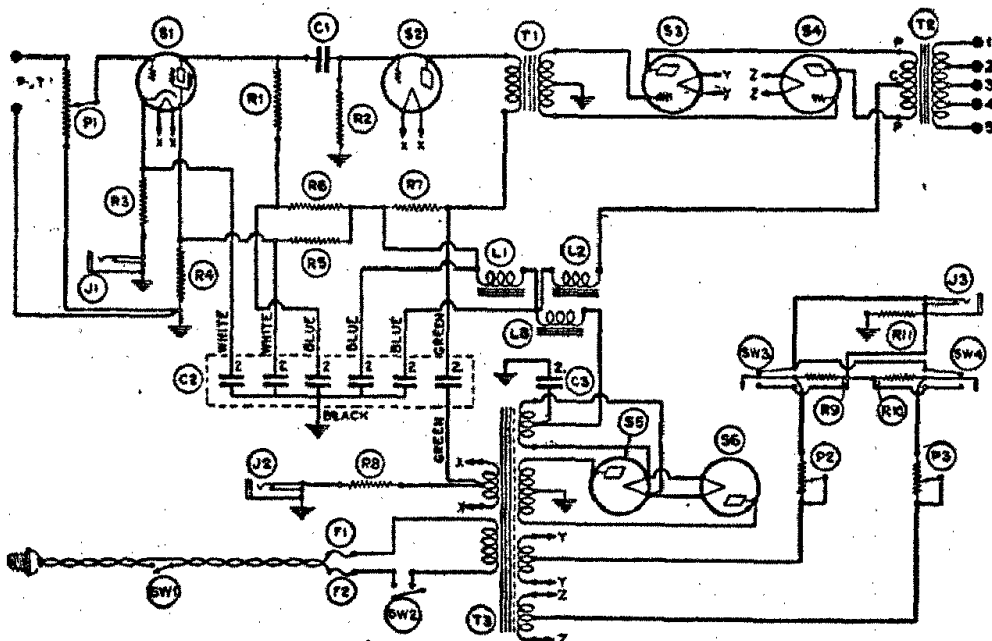
MODEL 685  
MODEL 690  
MODEL 692

- 1 For Option of Radio, Record and Microphone Use, use #220-M Input Transformer as shown
- 2 For Microphone Use Only, use #242 Input Transformer
- 3 For Radio Use Only, use #220 Input Transformer
- 4 For Record-Pickup Use Only, Omit Input Transformer and Connect Record-Pickup in place of Input Transformer Secondary directly to Ends of 500,000 Ohm Volume-Control Potentiometer
- 5 When Using Microphone (Single or Double-Button Type Optional) keep well away from Loud Speakers to avoid "Singing"
- 6 Use 3 to 4½ Volts of Dry Battery for Microphone
- 7 Group all Loud Speakers Used into Cluster, to avoid "Echo Effect"

**Model 685:**



### Schematic Diagram of the S-M 690 Amplifier



**Model 692**

- P1 No. 4491—Potentiometer  
P2 } No. 4490—Potentiometer  
P3 }  
R1 No. 4772—Resistor  
R2 No. 4700—Resistor  
R3 No. 4730—Resistor  
R4 No. 4771—Resistor  
R5 No. 4685—Resistor  
R6 No. 4698—Resistor  
R7 No. 4726—Resistor  
R8 No. 4689—Resistor  
R9 } No. 4723—Resistor  
R10 }  
R11 No. 4776—Resistor