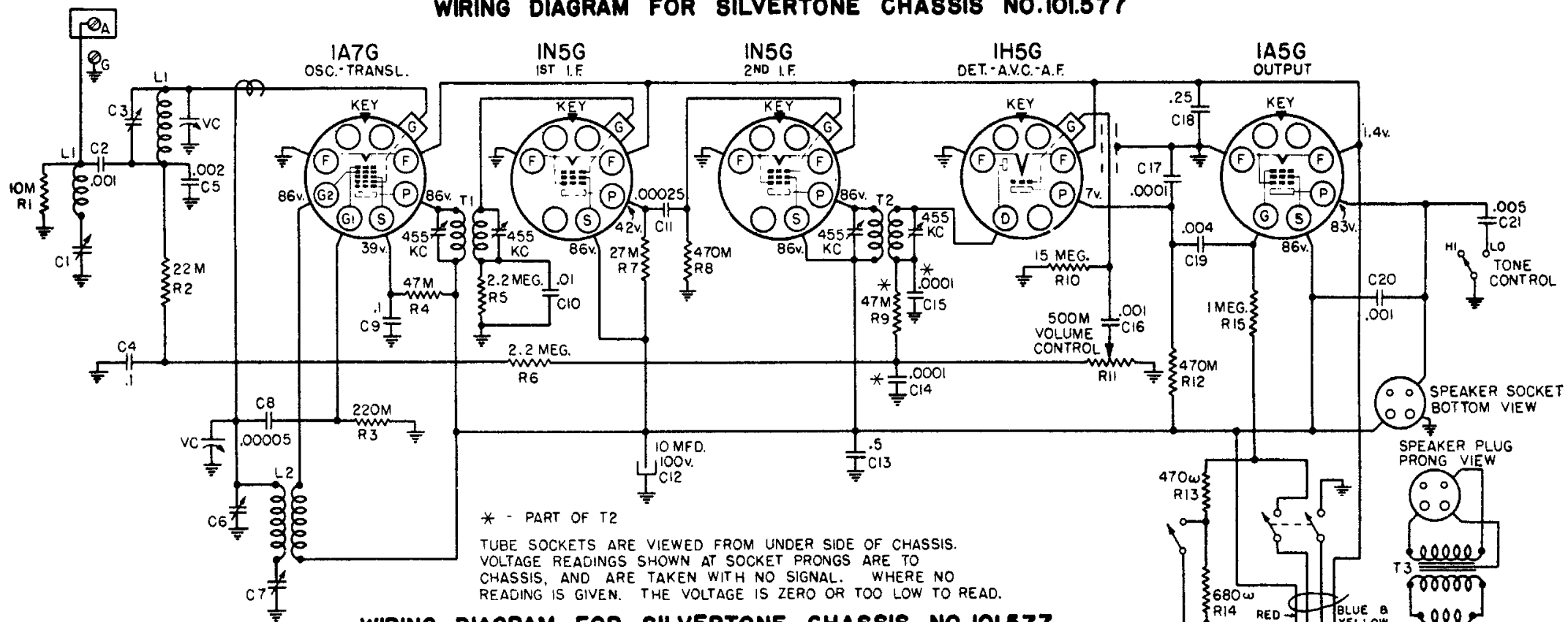
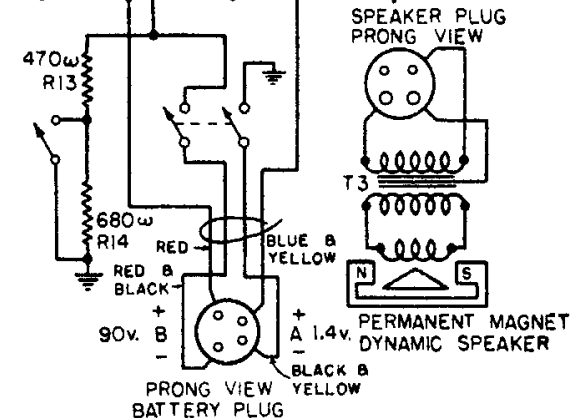


WIRING DIAGRAM FOR SILVERTONE CHASSIS NO.101.577



WIRING DIAGRAM FOR SILVERTONE CHASSIS NO.101.577

Output meter connections Across loud speaker voice coil
 Output meter reading to indicate 50 milliwatts 0.3 volts
 Approximate microvolts input to indicate 50 milliwatts output See chart below
 Generator ground lead connection Receiver chassis
 Dummy antenna value to be in series with generator output See chart below
 Connection of generator output lead See chart below
 Generator modulation 30%, 400 cycles
 Position of Volume Control Fully on
 Position of Tone Control HI
 Position of pointer with variables fully closed Horizontal (To fall on block below 550 kc calibration mark.)



POSITION OF VARIABLE	GENERATOR FREQUENCY	DUMMY ANTENNA	GENERATOR CONNECTION	TRIMMER ADJUSTMENTS (IN ORDER SHOWN)	TRIMMER FUNCTION	APPROXIMATE MICROVOLTS
Closed	455 kc	.1 mfd.	1A7G Trans-lator Grid	T2, T1	IF	65
600 kc	455 kc	.0002 mfd.	Ant. Term.	C1*	IF Wave Trap	--
Fully open	1750 kc	.0002 mfd.	Ant. Term.	C6	Oscillator	45
1400 kc	1400 kc	.0002 mfd.	Ant. Term.	C3	Translator	20
600 kc(rock)	600 kc	.0002 mfd.	Ant. Term.	C7	Padder	35

Sears Models 6353
 6354
 6355