

I.F.
455 KC.

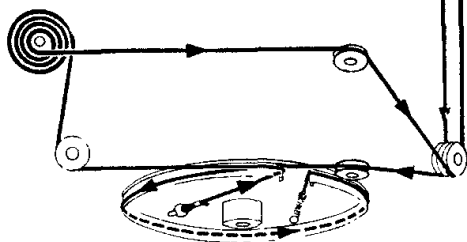
STEWART-WARNER

51T46, 51T56

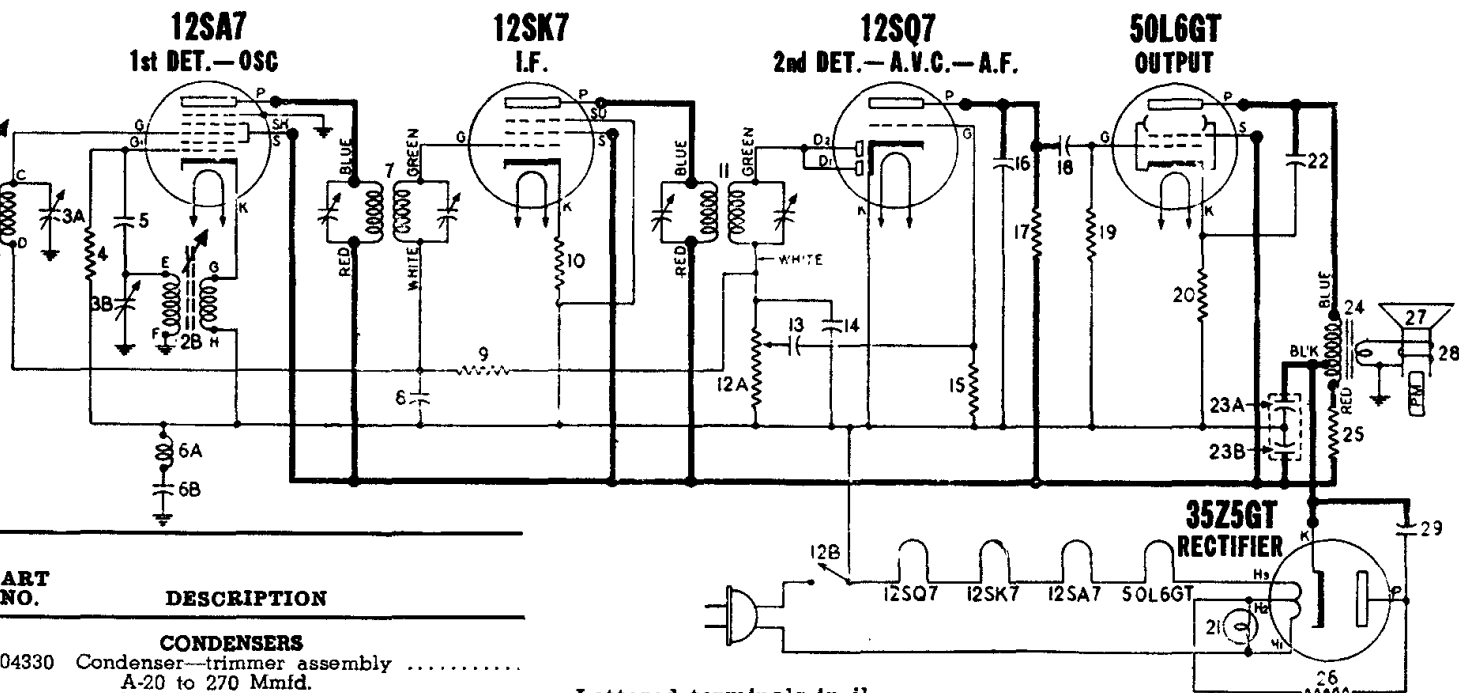
To string dial cord, turn to main drive drum to maximum counter - clockwise position and use following parts:

114955 Clip on end of cord
117057 Cord (54 inches)
119087 Ring for dial cord
161364 Tension Spring

DIAL AND POINTER DRIVE CORD ARRANGEMENT



DIA-GRAM NO.	PART NO.	DESCRIPTION
CONDENSERS		
3A, B	504330	Condenser—trimmer assembly A-20 to 270 Mmfd. B-40 to 370 Mmfd.
5	502931	Condenser—100 Mmfd. 500 volt.
6B	502158	Condenser—.2 Mfd. 400 volt.
8	502153	Condenser—.05 Mfd. 200 volt.
13	502156	Condenser—.004 Mfd. 400 volt.
14	502882	Condenser—.220 Mmfd. 500 volt.
16	502470	Condenser—.0008 Mfd. 400 volt.
18	502156	Condenser—.004 Mfd. 400 volt.
22	502152	Condenser—.02 Mfd. 400 volt.
23-A, B	500256	Condenser—electrolytic A-40 Mfd. 150 volt B-20 Mfd. 150 volt
29	502157	Condenser—.05 Mfd. 400 volt.
RESISTORS		
4	502130	Resistor—carbon 22,000 ohms 1/4 watt.
9	502135	Resistor—carbon 2.2 Meg. 1/4 watt.
10	502264	Resistor—carbon 47 ohms 1/4 watt.
12A, B	502928	Volume control—with switch; 1 Meg.
15	502136	Resistor—carbon 10 Meg. 1/4 watt.
17	502134	Resistor—carbon 470,000 ohms 1/4 watt.
19	502134	Resistor—carbon 470,000 ohms 1/4 watt.
20	502932	Resistor—carbon 150 ohms 1 watt.
25	502933	Resistor—carbon 1,500 ohms 1 watt.
26	502574	Resistor—carbon 33 ohms 1/2 watt.
COILS AND TRANSFORMERS		
1	504348	Loop antenna
2-A, B	504335	Tuning unit; complete assembly.
2A	504760	Coil—antenna (less slug)
2-B	504212	Coil—oscillator (less slug)
	504211	Slug for Ant. coil (yellow end).
	504213	Slug for Osc. coil (white end).
6A		Choke: three turns of #22 insulated wire closely wound on condenser 6B.
7	502926	Transformer—1st I.F.
11	502927	Transformer—2nd I.F.
24	502817	Transformer—output for C-502816 speaker.
	504583	Transformer—output for W-502816 speaker.
21	118921	Lamp—dial (Mazda 47) 6-8V. 150 Ma.



Lettered terminals in illustrations correspond to similarly lettered terminals on the circuit diagram.

SOCKET VOLTAGES

Measured with voltmeter having sensitivity of 1000 ohms per volt except where indicated by (*).

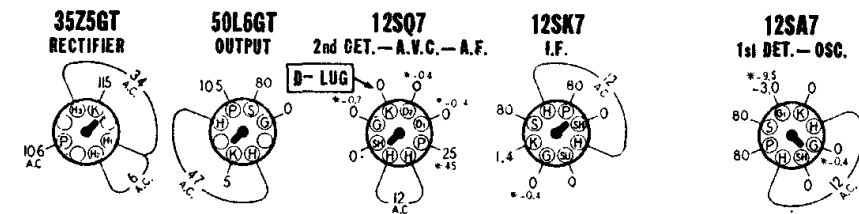
VOLUME ON FULL WITH NO SIGNAL

DIAL TUNED TO 540 KC.

BOTTOM VIEW OF CHASSIS

HEATEN VOLTAGES MEASURED ACROSS SOCKET TERMINALS. ALL OTHER VOLTAGES MEASURED BETWEEN SOCKET TERMINALS AND B- LUG.

117 VOLT 60 CYCLE A.C. POWER SUPPLY USED FOR THESE MEASUREMENTS.



REAR OF CHASSIS

*—Measured with vacuum tube voltmeter