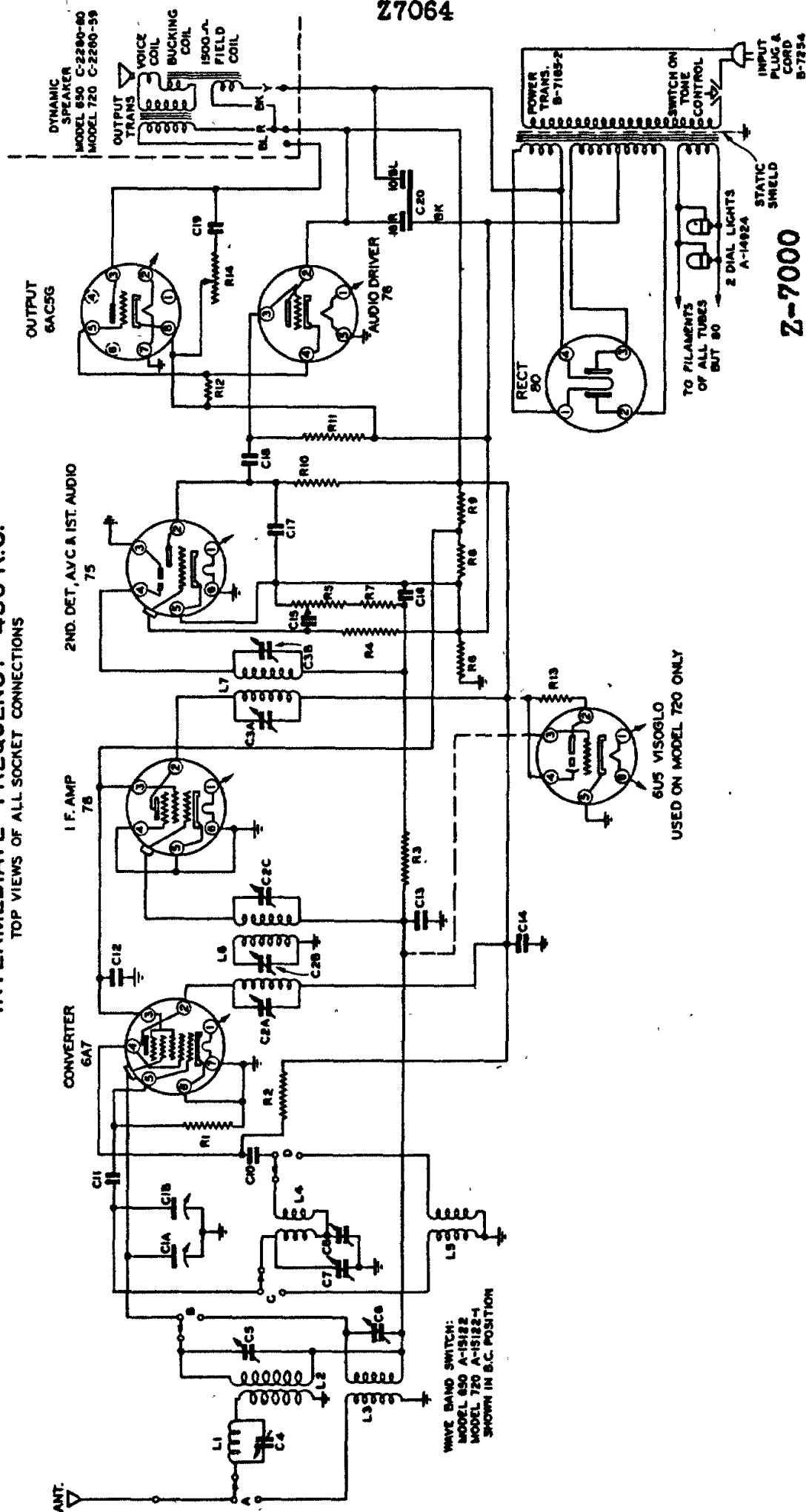


# **SCHEMATIC DIAGRAM** **AIR CASTLE SUPERHETERODYNE** **INTERMEDIATE FREQUENCY 456 K.C.** **TOP VIEWS OF ALL SOCKET CONNECTIONS**

**SPIEGEL**

**MODELS W166, 720, Z7000,  
 Z7014, Z7016, Z7050,  
 Z7064**



**Z-7000  
 Z-7014  
 Z-7016  
 Z-7050  
 Z-7064**

**W-166-720**

C1A1B VAR. COND. MODEL 850	B-8064	C10 001 MFD 400V	C-3204-2C
C2A1B NO.1 I.F. TRIMMER	B-7229	C11 50 MMFD. MOLDED	C-720-320
C3A1B NO.2 I.F. TRIMMER	A-14782	C12 J MFD 200V.	C-3202-36C
C4 I.F. REJECTOR TRIMMER	B-7200-CH		
C5 B.C. ANT. TRIMMER	A-14068-4		
C6 S.W. ANT. TRIMMER	A-14068-5		
C7 B.C. OSC. TRIMMER	A-14068-5		
C8 B.C. OSC. PADDER	B-7189-BY		
C13 .05 MFD. 200V	C-3202-26C		
C14 .1 MFD. 400V.	C-3204-36C		
C15 .02 MFD. 200V.	C-3202-22C		
C16 250 MMFD. MOLDED	C-720-324		
C17 250 MMFD. MOLDED	C-720-324		
C18 .05 MFD. 400V	C-3204-26C		
C19 .03 MFD. 800V	C-3206-60C		
C20 16-10 MFD ELECT	A-14789		
R1 50,000 $\Omega$ . .25W	C-2795-93B		
R2 22,000 $\Omega$ . .5W	C-2798-76C		
R3 1 MEGOHM .25W	C-2795-98B		
R4 47 MEGOHM .25W	C-2795-90B		
R5 500,000 $\Omega$ -VOL CONTROL	A-15130-1		
R6 180 $\Omega$ . .25W	C-2795-33B		
R7 50,000 $\Omega$ . .25W	C-2795-93B		
R8 27,000 $\Omega$ . 1W	C-2797-79B		
R9 33,000 $\Omega$ . .3W	C-2799-80A		
R10 270,000 $\Omega$ . .25W	C-2795-91B		
R11 1 MEGOHM .25W	C-2795-98B		
R12 27,000 $\Omega$ . .25W	C-2795-79B		
R13 220,000 $\Omega$ . .25W	C-2795-90B		
R14 1 $\Omega$ . .5W	C-2795-90B		
L1 I.F. REJECTOR COIL	A-14677		
L2 B.C. ANT. COIL	A-14679-1		
L3 S.W. ANT. COIL	A-14682-4		
L4 B.C. OSC. COIL	A-14213-2A		
L5 S.W. OSC. COIL	A-14794		
L6 NO.1 I.F. COIL	A-14794		
L7 NO.2 I.F. COIL	A-12064-17		