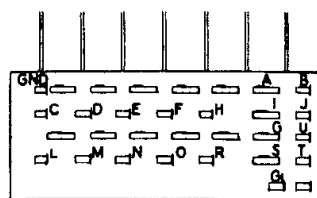


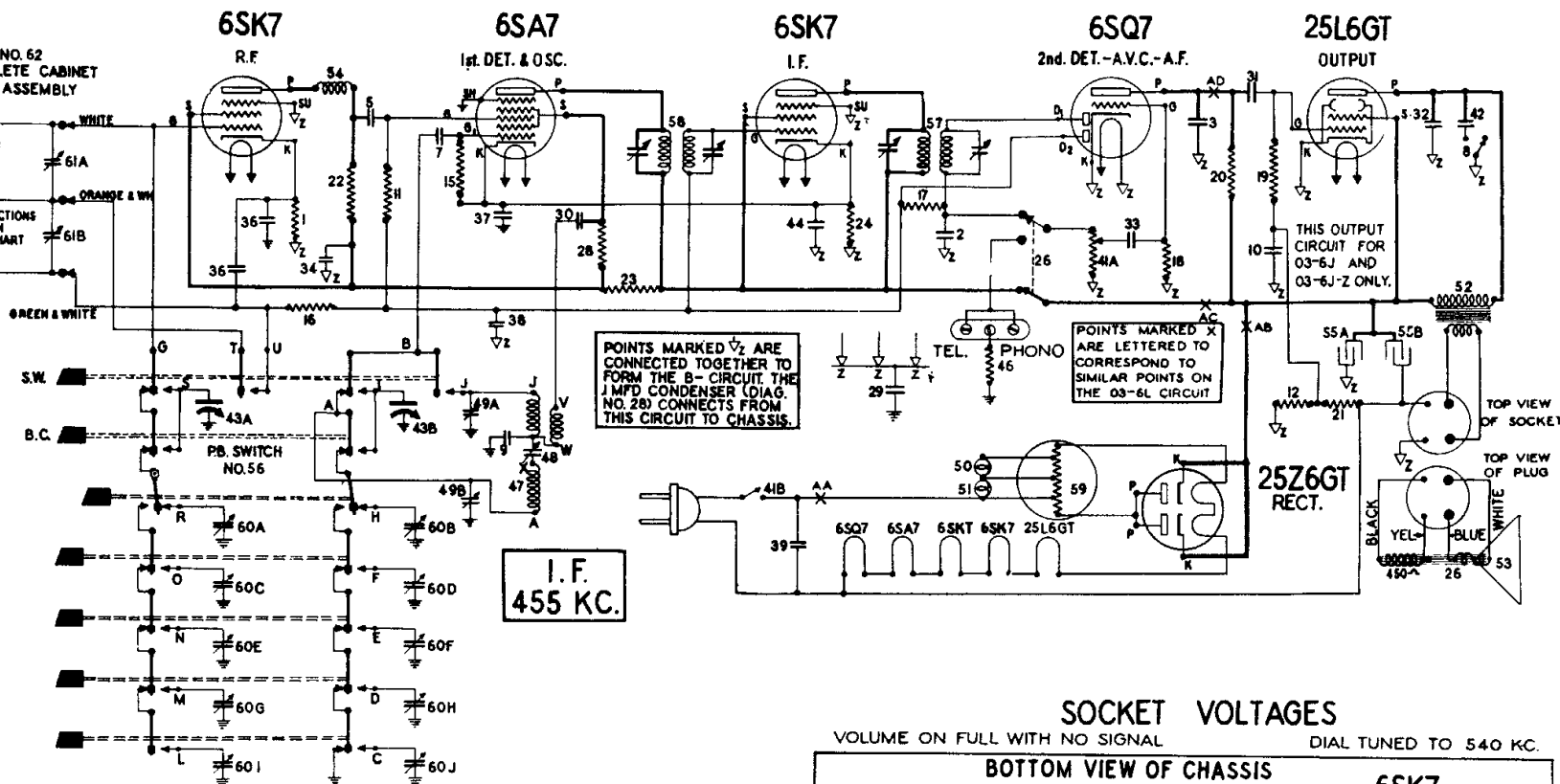
NO. 62
COMPLETE CABINET
BACK ASSEMBLY



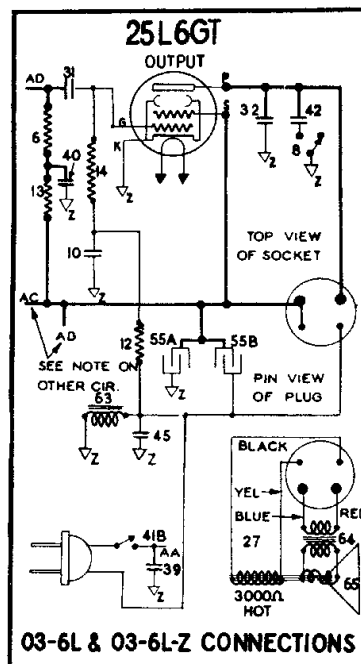
PUSH BUTTON SWITCH

DIAGRAM NO.	03-6J & 03-6L	03-6J-Z & 03-6L-Z
60A-60B	HIGH	HIGH
60C-60D	MED.	HIGH
60E-60F	LOW	MED.
60G-60H	LOW	MED.
60I-60J	LOW	LOW

**SEE PARTS LIST BELOW FOR
RANGES IN KILOCYCLES**



1	Resistor—carbon 400 ohms $\frac{1}{4}$ watt
23	Condenser—mica .260 mfd.
45	Condenser—mica .110 mfd.
6	Resistor—carbon 470,000 ohms $\frac{1}{4}$ watt
7	Condenser—mica .51 mmfd.
8	Switch—tone
9	Condenser—mica .002 mfd.
10	Condenser—10 mfd. 35 volt (03-6L & 03-6L only)
11	Condenser—.1 mfd. 600 volt (03-6J & 03-6J only)
12	Resistor—carbon 47,000 ohms $\frac{1}{4}$ watt.
13-14	Resistor—carbon 220,000 ohms $\frac{1}{4}$ watt
15	Resistor—carbon 100,000 ohms $\frac{1}{4}$ watt.
16	Resistor—carbon 470,000 ohms $\frac{1}{4}$ watt.
17-18	Resistor—carbon 3.3 meg. $\frac{1}{4}$ watt
19	Resistor—carbon 330,000 ohms $\frac{1}{4}$ watt (03-6J & 03-6J-Z only)
20-21	Resistor—carbon 680,000 ohms $\frac{1}{4}$ watt (03-6J & 03-6J-Z only)
22	Resistor—carbon 3,300 ohms $\frac{1}{4}$ watt.
23	Resistor—carbon 1,500 ohms $\frac{1}{4}$ watt.
24	Resistor—carbon 220 ohms $\frac{1}{4}$ watt.
25	Switch—D.P.D.T.
26	Seeker—dynamic (5") (03-6J & 03-6J-Z only)
27	Speaker—dynamic (8") (03-6L7 & 03-6L7-Z)
28	Resistor—carbon 680 ohms $\frac{1}{4}$ watt.
29	Condenser—.1 mfd. 600 volt.
30-31-32	Condenser—.01 mfd. 600 volt.
33	Condenser—.004 mfd. 600 volt.
34	Condenser—.2 mfd. 600 volt.
35 to 39	Condenser—.05 mfd. 600 volt.
40	Condenser—.05 mfd. 600 volt (03-6L & 03-6L-Z only)
41A-41B	Volume control—1 megohm (with switch).
42	Condenser—.04 mfd. 600 volts.
43A-43B	Condenser—tuning (with drum).
44	Condenser—.25 mfd. 600 volts.
45	Condenser—.5 mfd. 150 volts (03-6L & 03-6L-Z only)
46	Resistor—220,000 ohms $\frac{1}{4}$ watt (on Underwriters' approved sets).
47	Coil—oscillator
48	Condenser—padding
49A-49B	Trimmer slug (2 section)
50-51	Lamp—dial 6.3 volts .25 amps.



SOCKET VOLTAGES

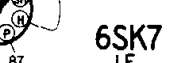
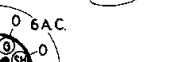
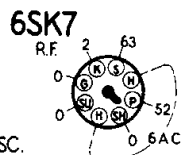
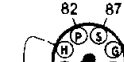
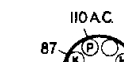
VOLUME ON FULL WITH NO SIGNAL

DIAL TUNED TO 540 KC

BOTTOM VIEW OF CHASSIS

MEASURE ALL VOLTAGES
EXCEPT FILAMENT BETWEEN
THE TUBE SOCKET TERMINALS
AND B-

LINE VOLTAGE
117 VOLTS



REAR OF CHASSIS

These readings taken using a voltmeter of 1000 ohms per volt.

NOTE A: The bias on the 25L6GT grid is: on 03-6J chassis: —4 volts measured across resistor No. 12; on 03-6L chassis: —5 volts measured across choke No. 63.

NOTE B: Due to the high resistance of resistors No. 20, 6, and 13, only a small voltage will be read at the plate of the 6SQ7 when using a voltmeter having a resistance of 1000 ohms per volt.