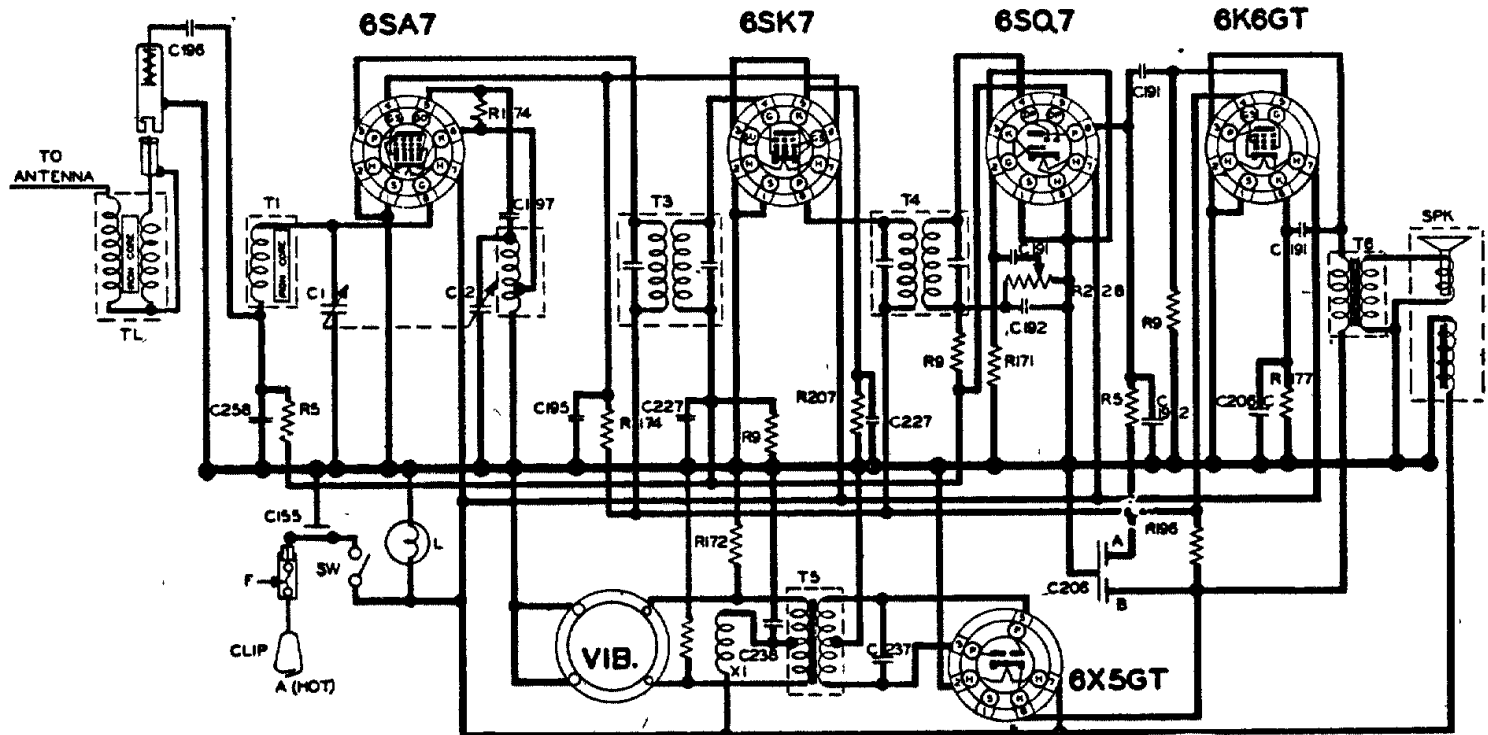
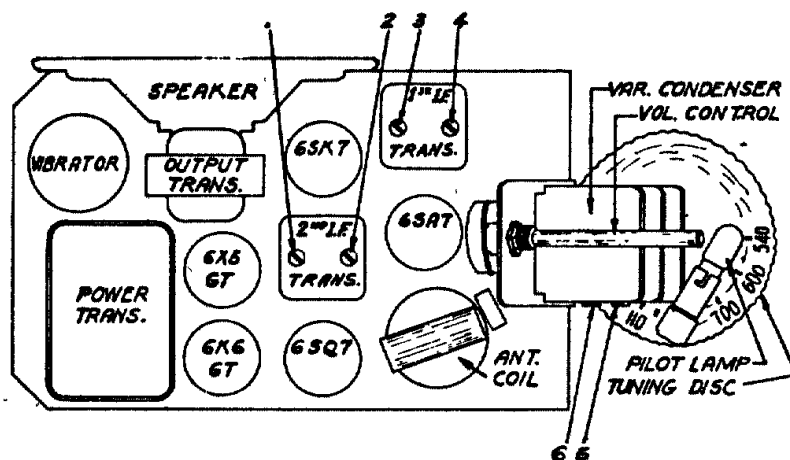


# SCHEMATIC CIRCUIT DIAGRAM AIRCRAFT CAR RADIO CHASSIS RE-84



RESISTORS				CONDENSERS				CHOKES & TRANSFORMERS				MISCELLANEOUS UNITS			
R	OHMS	W	PART NO.	C	CAPACITY	VOLT	PART NO.	T-X	TYPE	PART NO.	SYMBOL	DESCRIPTION	PART NO.		
1	500K	1/4	17-2070	1	TWO GANG			1	ANTENNA COIL	00-8441	F	FUSE - 20 AMP	17-2228		
2	1M	1/4	17-2080	2	VARIABLE			2	OSCILLATOR COIL	00-8669	L	DIAL LIGHT BULB - MAZDA NO 47	17-18378		
3	10K	1/4	17-14388	30	0002	250	17-14317	3	FIRST IF COIL	00-17003	SPK	SPEAKER ASSEMBLY	17-18428		
4	100	1/4	17-14390	237	205	250	17-14343	4	SECOND IF COIL	00-17004	SW	POWER SWITCH	17-17008		
5	100	1/4	17-14390	208A	10 MFD.	300		5	POWER TRANS.	00-18446	TL	TRANSMISSION LINE	00-10099		
6	20K	1/4	17-14390	208B	10 MFD.	300	17-14397	6	OUT PUT TRANS.	00-18443	VIB	VIBRATOR	17-14767		
7	100	1/4	17-14390	208C	20 MFD.	25									
8	100	1/4	17-14390	19	20	400	17-14312								
9	100	1/4	17-14390	192	00025	500	17-14373	7	CHOKES						
10	100	1/4	17-14390	193	25	400	17-14378	8	SUPPRESSION CHOKES	00-18437					
11	100	1/4	17-14390	194	1	200	17-14377								
12	100	1/4	17-14390	197	0001	500	17-14376								
13	100	1/4	17-14390	230	5	150	17-14346								
14	100	1/4	17-14390	227	25	200	17-14375								
15	100	1/4	17-14390	236	204	200	17-14381								
IF PEAK 455 KC FREQUENCY RANGE 1575 TO 540 KC															



## Balancing Instructions

All sensitivities given for 1/2 watt output 1.4 across Voice Coil

Operation No.	Connect Bal. Oscillator to	Bal. Oscillator Frequency	Adjust Padder No.	Dial Setting	Sensitivity
1	6SA7 Grid	455	1, 2, 3 & 4	550 KC	50uv
2	Antenna Coupler Through 20 uuf	1400	5	1400	
3	"	1400	6	1400	10uv