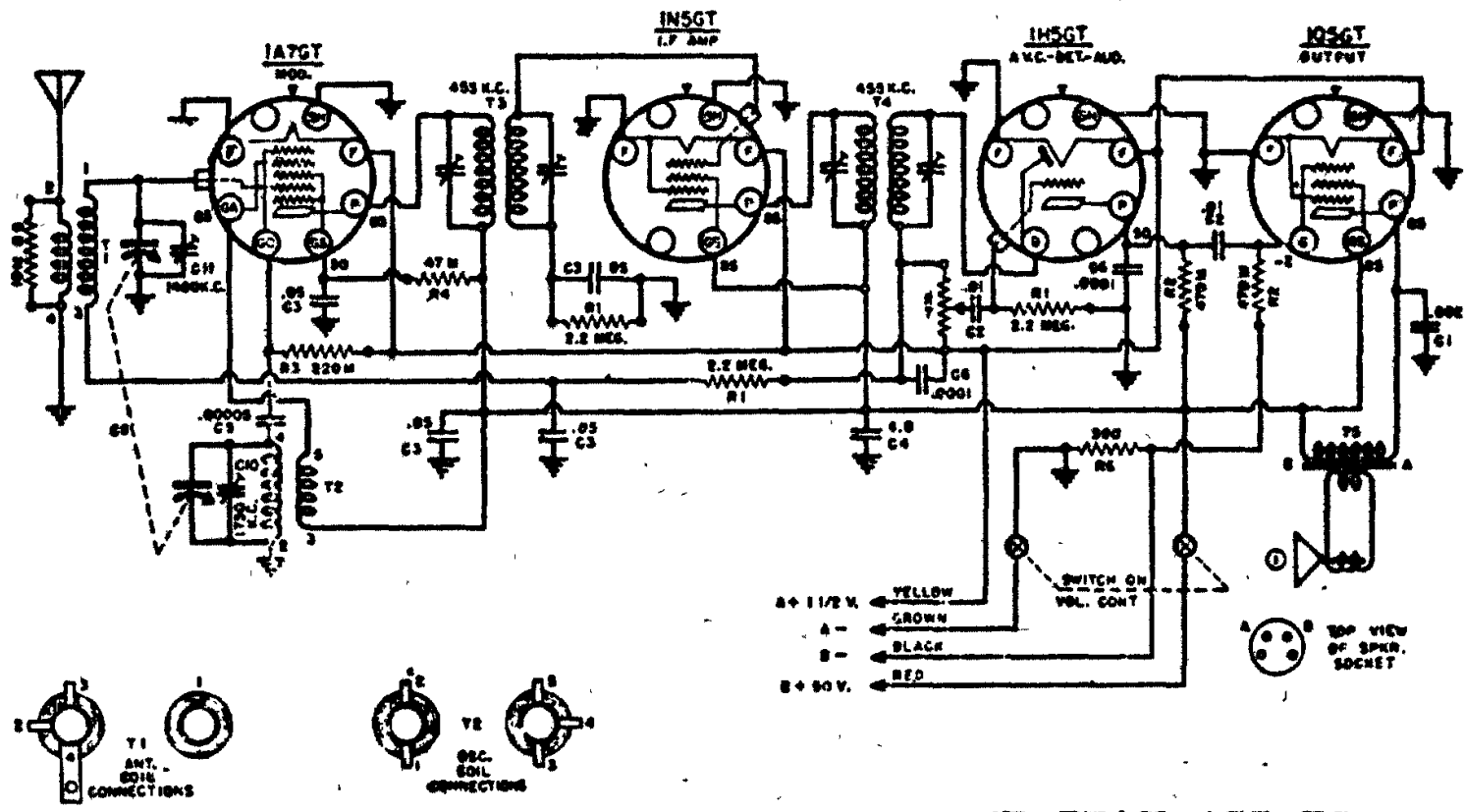


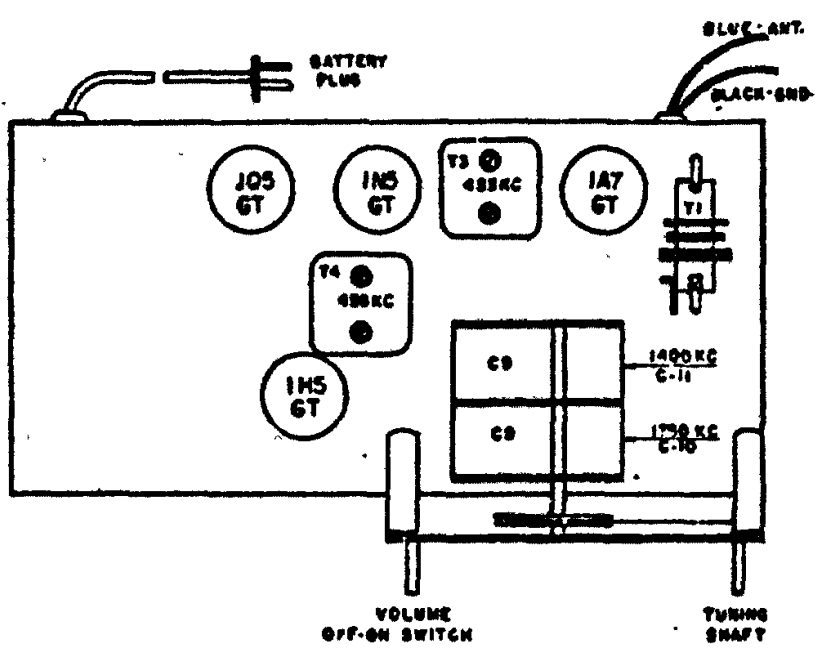
SPEIGEL, INC. MODEL A-2104 Ch. 0-44



IF PEAK 455 KC

TUBE SOCKETS ARE VIEWED FROM UNDERSIDE OF CHASSIS.
VOLTAGE READINGS AT HEATED SOCKET PRONGS ARE TO CHASSIS.
VOLTAGES MUST BE MEASURED WITH NO SIGNAL.
VOLTAGES ARE MEASURED WITH 1000 OHM PER VOLT VOLTMETER.
WHERE NO VOLTAGE READING IS SHOWN AT SOCKET PRONGS, IT INDICATES
ZERO VOLTAGE OR A VERY LOW READING.
ALIGNMENT IS MADE AT THE FREQUENCIES SHOWN AT THE TRIMMER CONDS.
CAPACITY VALUES ARE IN MICROFARADS.

CODE	PART NO.	DESCRIPTION	CODE	PART NO.	DESCRIPTION	CODE	PART NO.	DESCRIPTION	Q-44
R1	60-179	2.2 MEGOHM 1/2 W. RESISTOR	C1	16-130	.002 MFD. 50V. TUBULAR COND.	T1	10-344	ANTENNA TRANSFORMER	
R2	60-178	470M OHM	C2	16-121	.01 " 250V.	T2	10-341	OSCILLATOR	
R3	60-180	520M	C3	1622	.05 " "	T3	10-342	1ST. 1.7	
R4	60-177	47M	C4	16-250	5.0 " 150V.V. ELECTROLYTIC	T4	10-343	2ND 1.7	
R5	60-218	10M	C5	15-128	.0005 MFD. MICA CONDENSER	T5	OUTPUT TRANS (50W SPKR)	
R6	60-221	300	C6	1501	.0001				
R7	64-149	1 MEGOHM VOLUME CONTROL	C9	19-165	2 GANG VAR COND. ALSO 500 OHM	I	79-297	5" P.M. SPEAKER	



LOCATION OF PARTS ON TOP OF CHASSIS BASE